



# Underwood Engineers

**Fleet Street Reconstruction – Congress Street  
Portsmouth, NH**

**Public Project Start-up Information**



December 9, 2025



## Tonight's Agenda:

- Project Team
- Limits of Work
- Scope of Work
- Anticipated Start-up Schedule
- Typical Impacts
- Pedestrian and Traffic Accommodations
- Distribution of Public Information
- Questions



## Project Team



**City of Portsmouth (COP)**

(603) 427-1530



**Underwood Engineers (UE)**

(603) 436-6192



**N. Granese & Sons**

(781) 592-8121

## Project Team – Personnel

### City of Portsmouth

- Dave Desfosses – Project Manager
- Erich Fiedler – City Engineer
- Doug Sparks – Utilities Foreman

### Underwood Engineers

- Dan Rochette, P.E. – Project Manager
- Cole Arcieri-Rowe – Project Engineer
- Cheryl Dionne – Resident Project Representative

### Granese & Sons

- Steven Granese, P.E. – President
- Bryan Granese – Project Manager
- Brooks Keon – Site Superintendent



## Project Team – For any Onsite Questions or Concerns...



**Underwood Engineers (UE)**

### Resident Project Representative

Cheryl Dionne  
(207) 351-5090

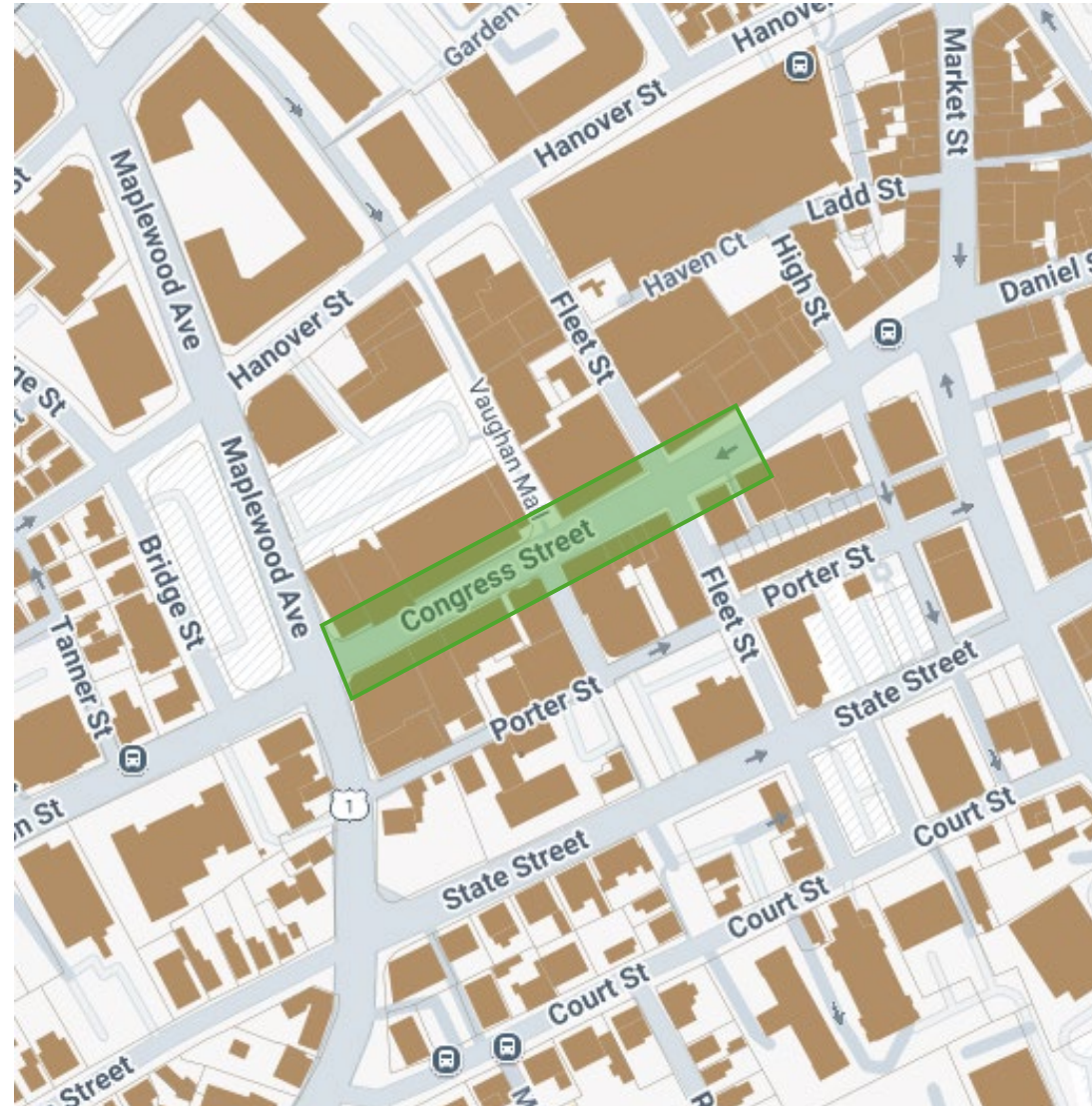


**N. Granese & Sons**

### Site Superintendent

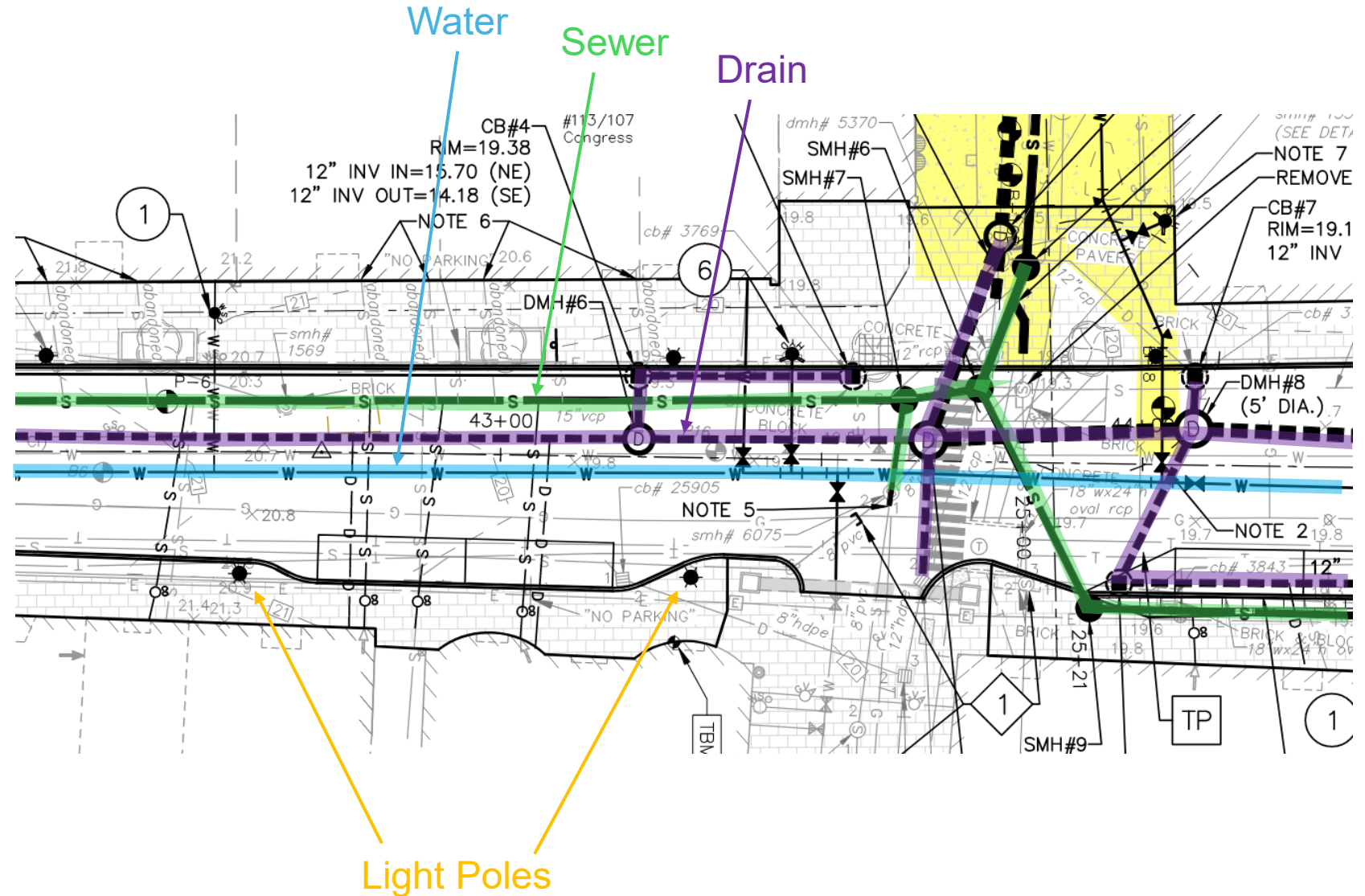
Brooks Keon

## Project Limits



## Scope of Work

- Replace existing watermain
- Replace existing sewer system
- Roadway Reconstruction
- Install separated storm water system including building services for roof drains
- Relocate light poles
- Sidewalk Reconstruction



## Anticipated Schedule

- Winter Construction: Begin January 5<sup>th</sup>, 2026
- Winter work is generally weather dependent but expect crews to be working daily
  - Utility installations
  - Roadway reconstruction
  - Temporary sidewalk restoration
- Summer shut down: On or around June 15<sup>th</sup>
  - Work stops and site is cleaned up for the Summer season
- Fall Construction: Begin September 8<sup>th</sup>, 2026
  - Crews remobilize
  - Final sidewalk configurations
  - Final paving and lane restriping
- Final Completion: December 18<sup>th</sup>, 2026:

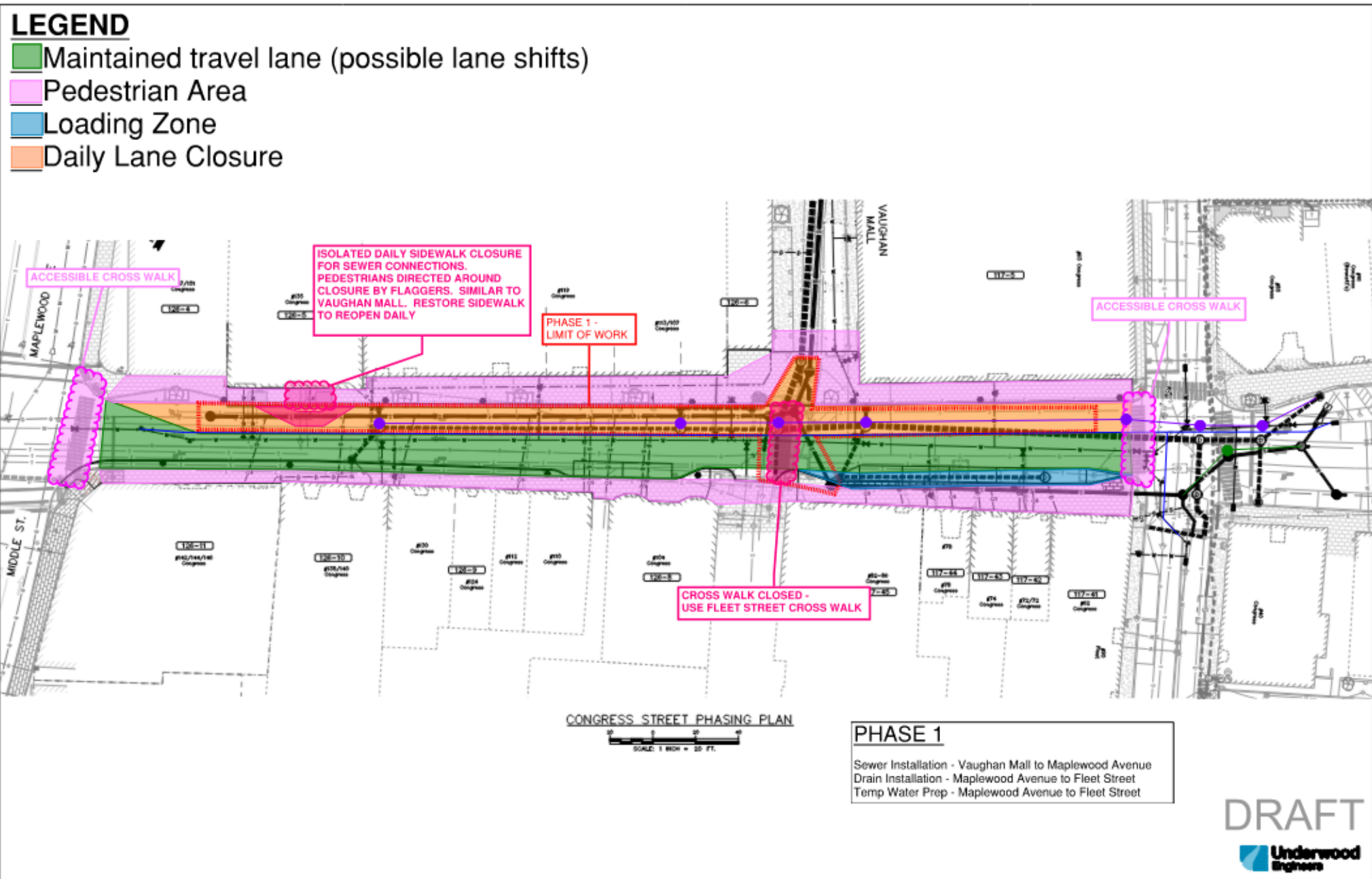


## Typical Impacts: How does this affect you?

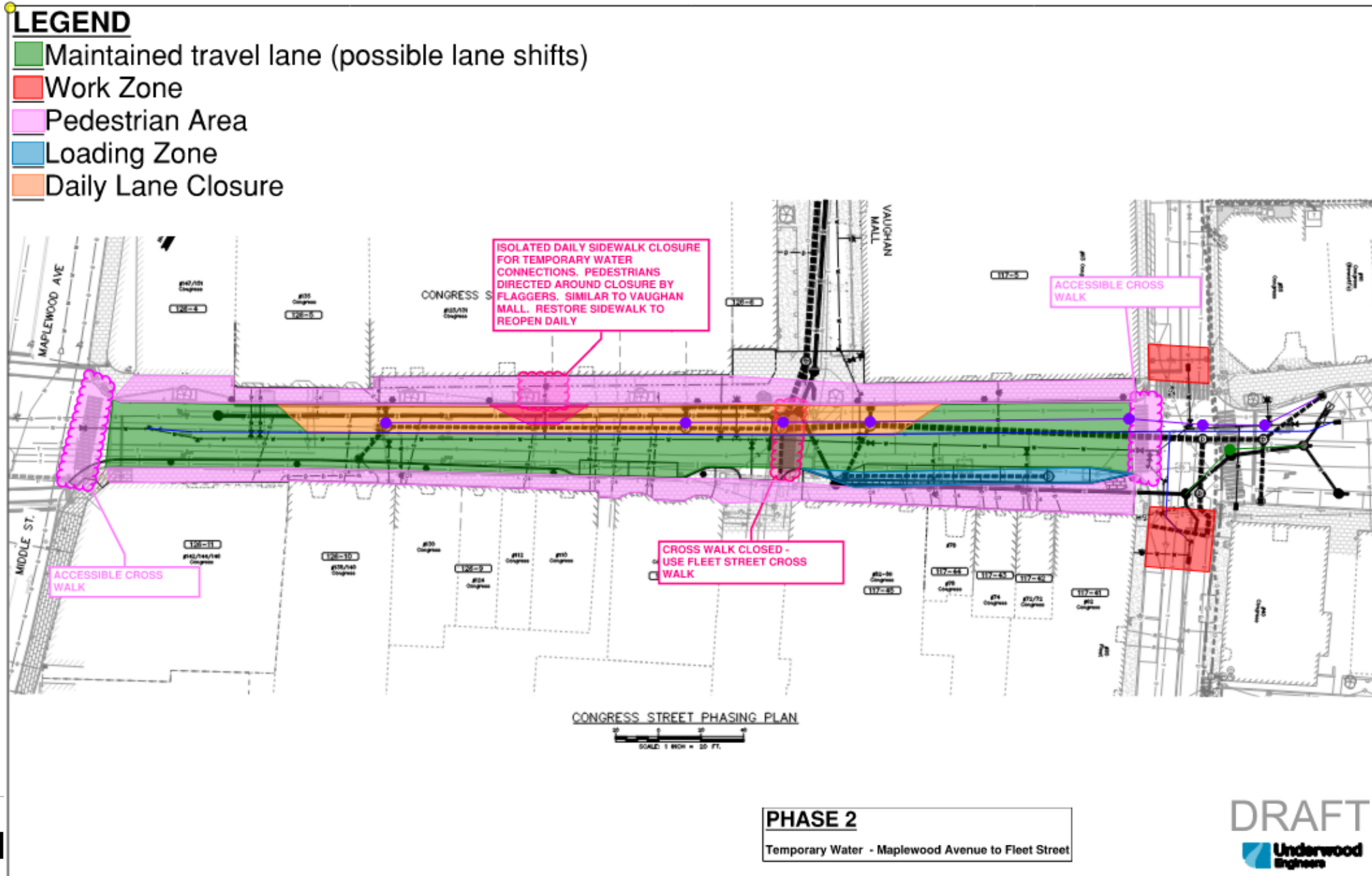
- Construction is Messy but... Congress Street business accessibility will be maintained on the sidewalk system
- Loss of select street parking
- Noise during working hours
  - Generally 7AM to 4PM
    - May go later on crucial work days
  - Monday to Friday
- Water service interruptions
  - 4 hours for scheduled water main tie ins
  - Approximately 30 minutes for water service turn over



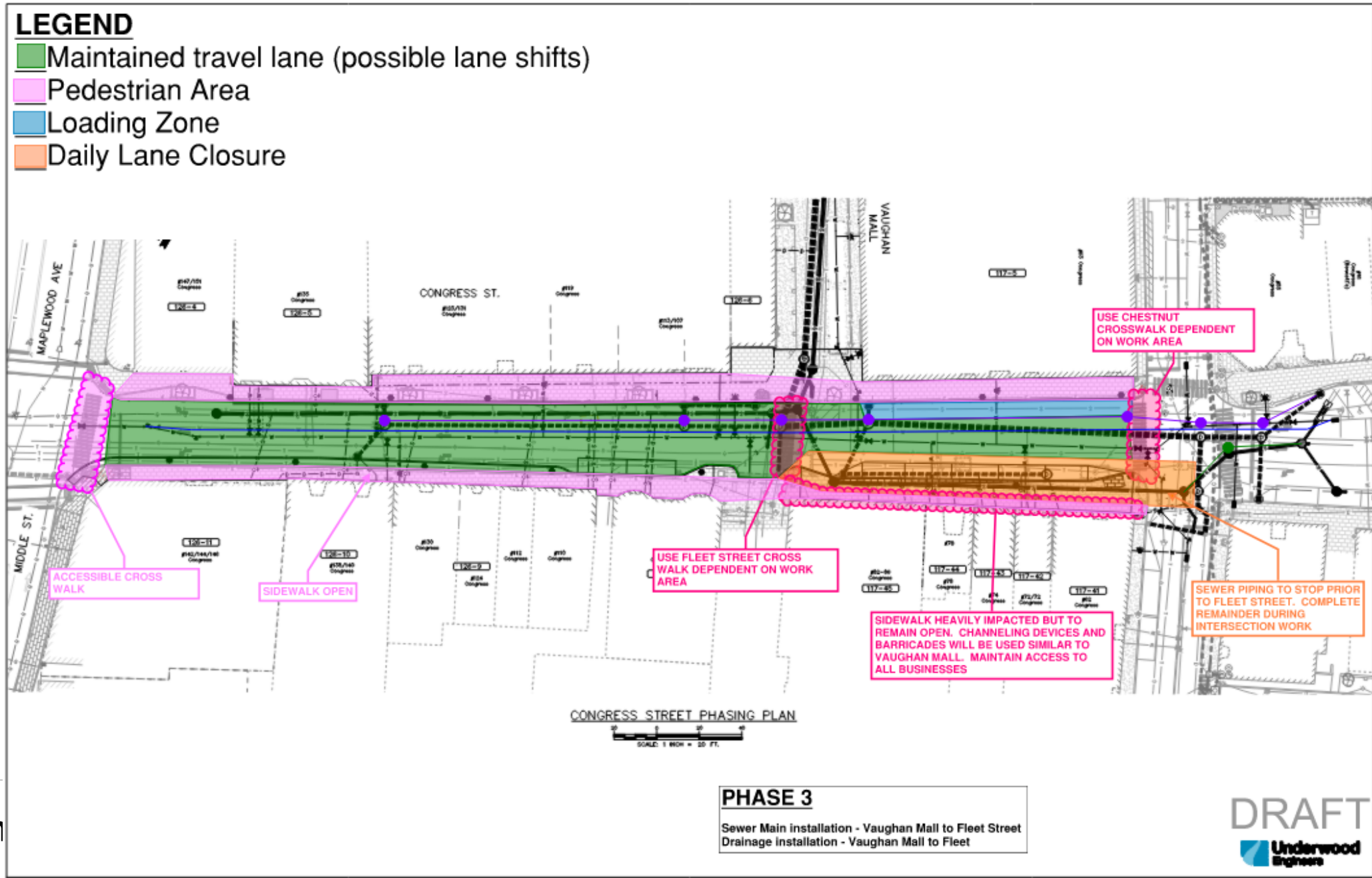
## Phase 1 Schematics



## Phase 2 Schematics



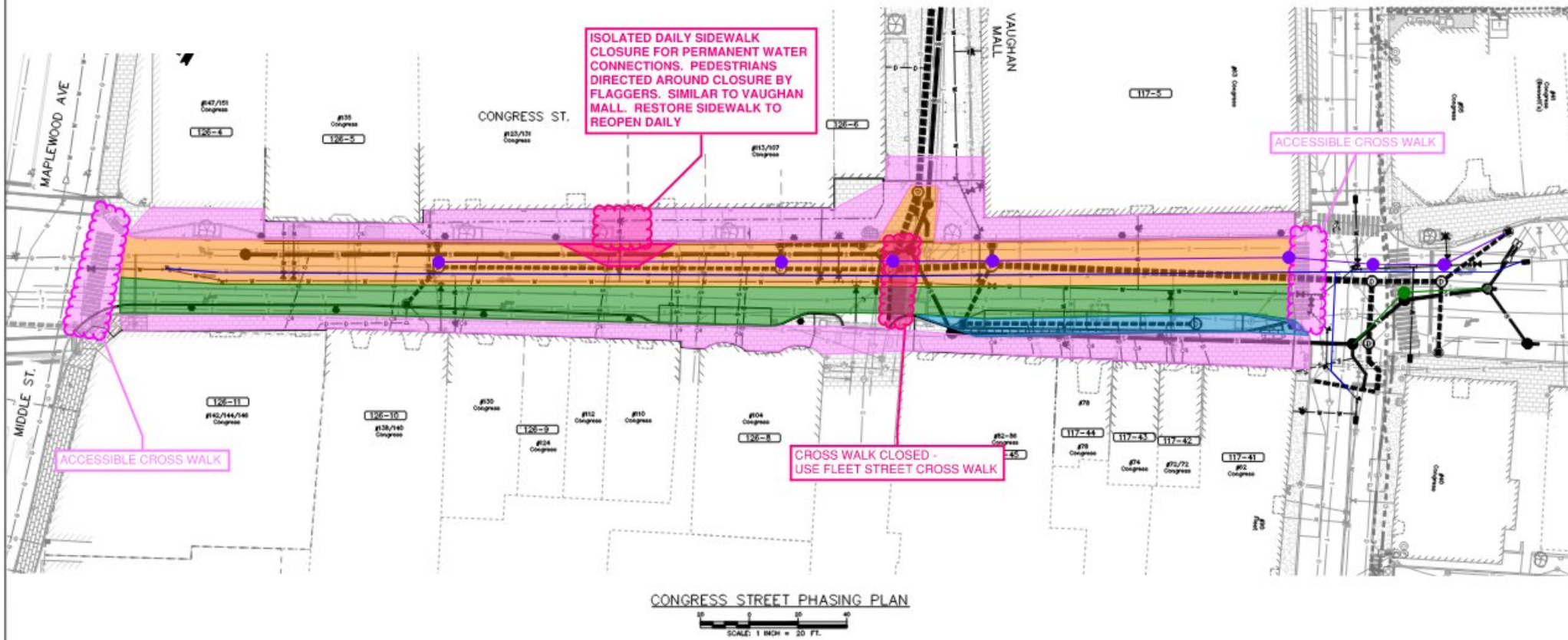
## Phase 3 Schematics



# Phase 4 Schematics

## LEGEND

- Maintained travel lane (possible lane shifts)
- Pedestrian Area
- Loading Zone
- Daily Lane Closure



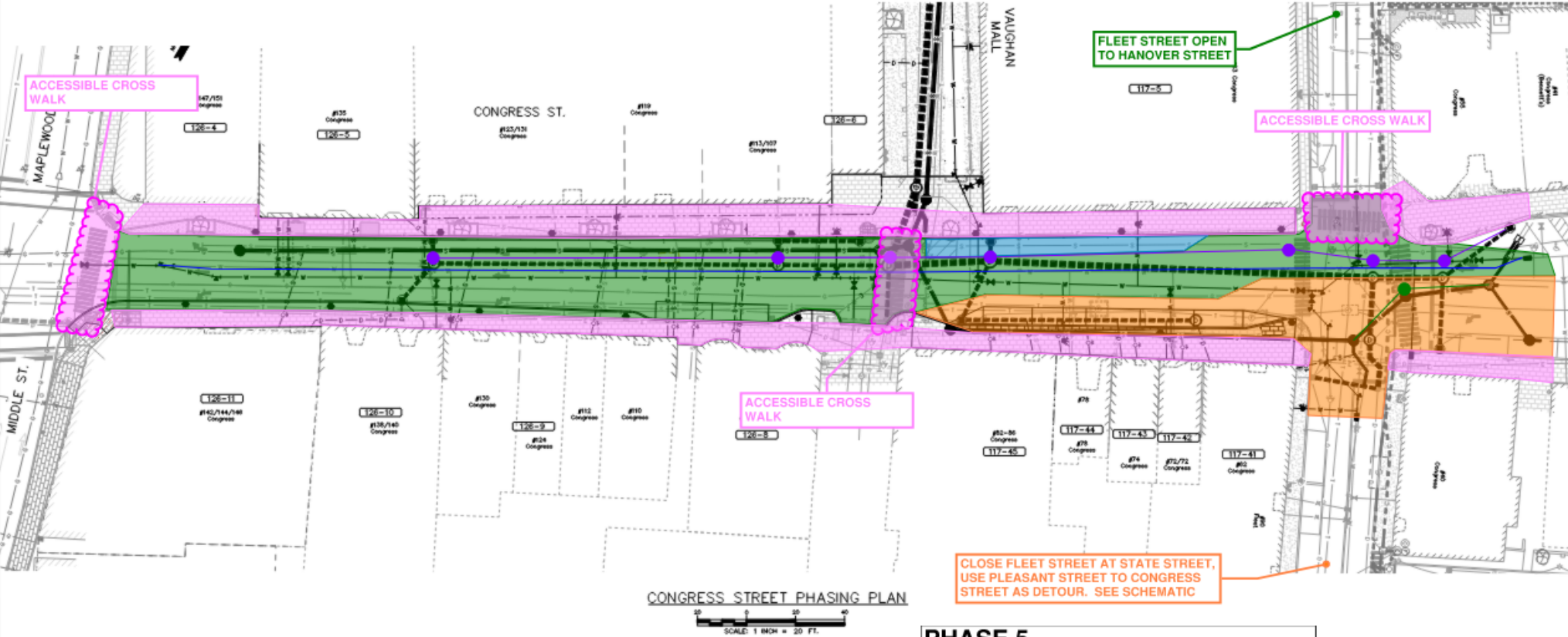
### PHASE 4

Water Installation - Maplewood Avenue to Fleet Street

# Phase 5 Schematics

## LEGEND

- Maintained travel lane (possible lane shifts)
- Pedestrian Area
- Loading Zone
- Daily Lane Closure



## PHASE 5

Utility installation - Fleet Street Intersection (Southerly Side)

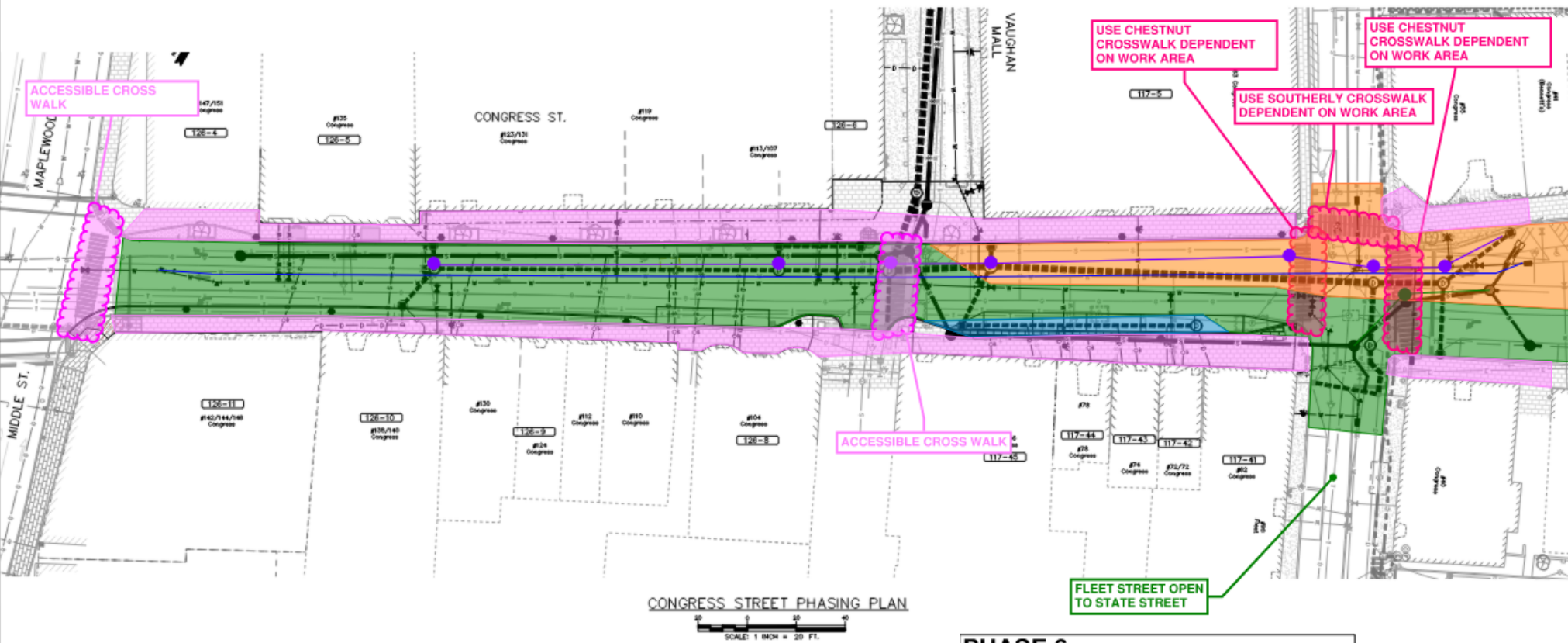
\*Intersection work will be sequenced as practical so that the traffic pattern required is consistent from one day to another. However, a day to day shift with Phase 6 may be required to accommodate some to the work sequencing.

DRAFT  
Underwood  
Engineers

# Phase 6 Schematics

## LEGEND

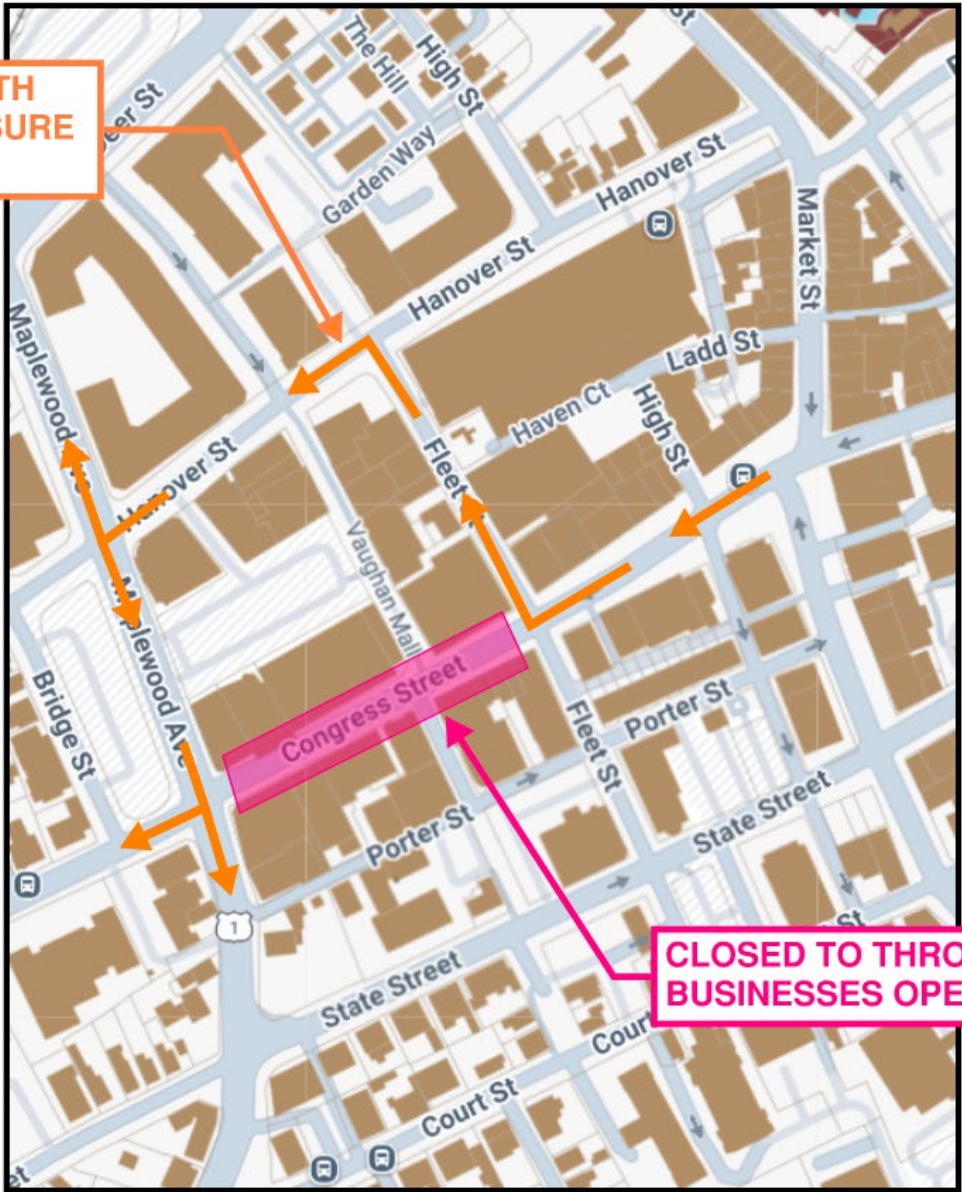
- Maintained travel lane (possible lane shifts)
- Pedestrian Area
- Loading Zone
- Daily Lane Closure



**PHASE 6**  
Utility installation - Fleet Street Intersection (Northerly Side)  
\*Intersection work will be sequenced as practical so that the traffic pattern required is consistent from one day to another. However, a day to day shift with Phase 5 may be required to accommodate some to the work sequencing.

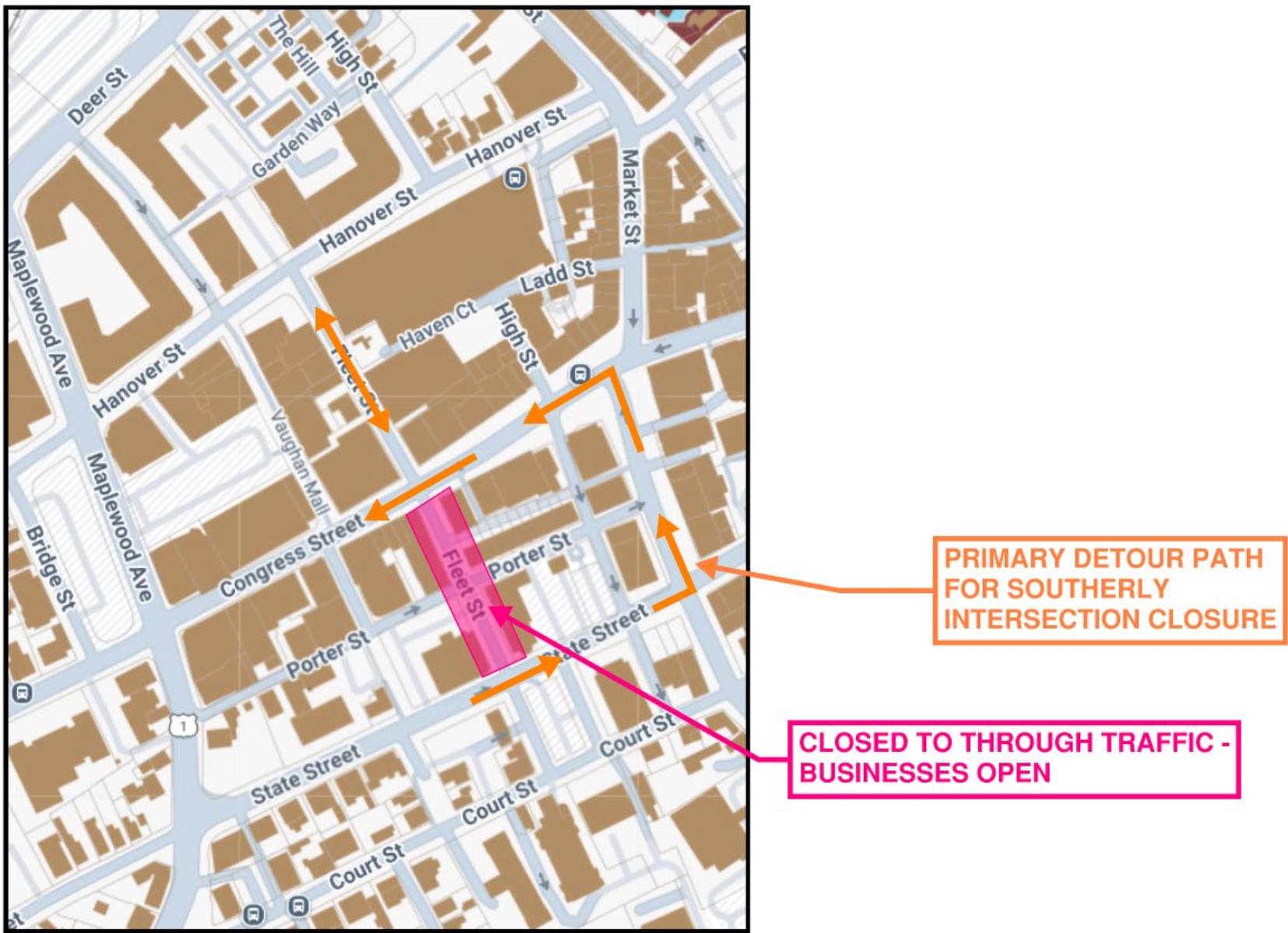
# Detour Schematics – Congress Street Closure

PRIMARY DETOUR PATH  
FOR CONGRESS CLOSURE

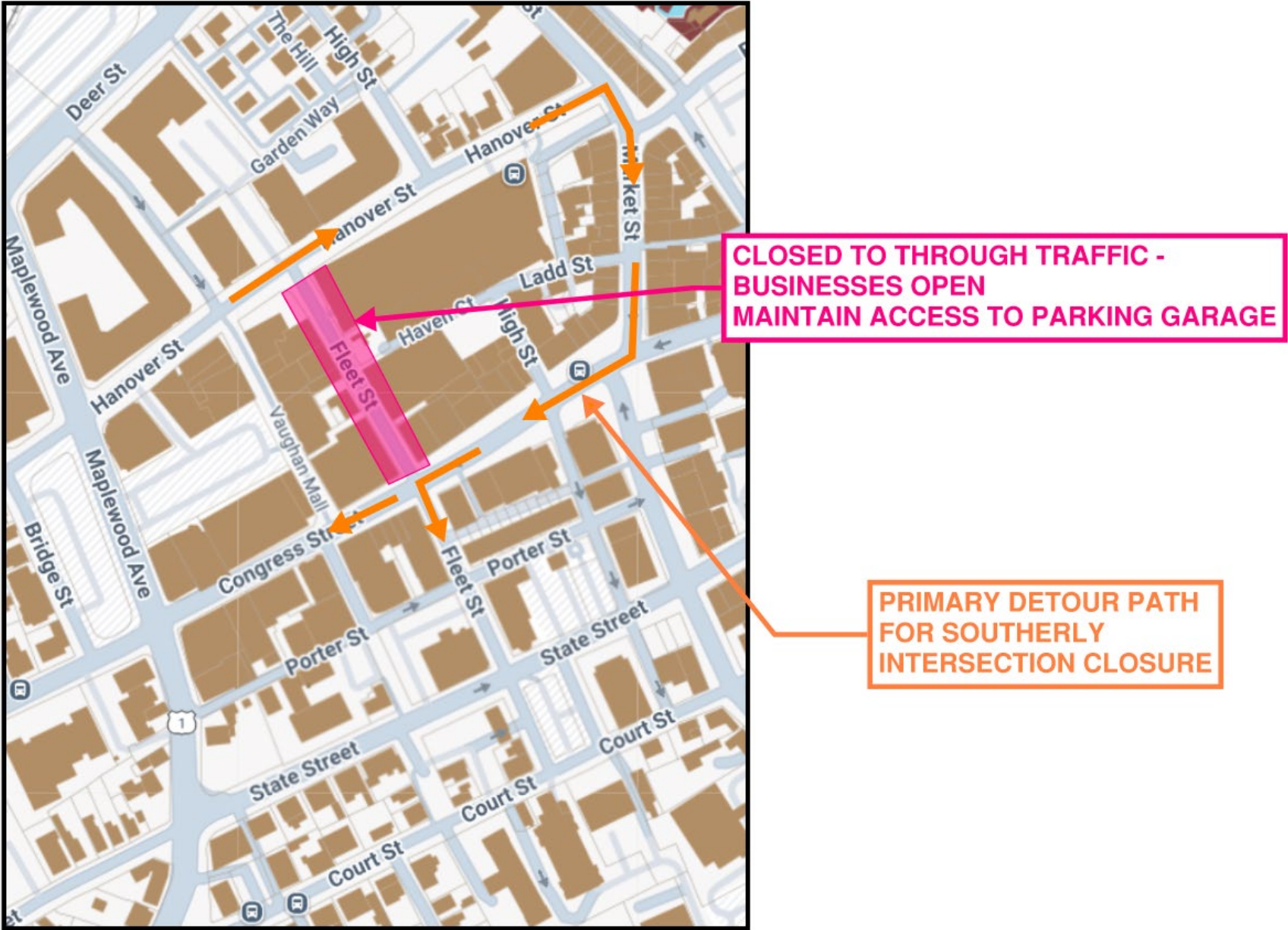


CLOSED TO THROUGH TRAFFIC -  
BUSINESSES OPEN

# Detour Schematics – Southerly Intersection Closure (Phase 5)



# Detour Schematics – Northerly Intersection Closure (Phase 6)



## Temporary Water

- Temporary water pipes will be in use to maintain water service during construction
- Will be buried similar to actual water main
- Connection through the existing service pipe & meter into the building
- Short duration interruption when switching over water service.
- Coordination with business owners for convenient time to switch over.



## Pedestrian Accommodations

- Physical barrier between work zone and pedestrian travel way
- Accommodations for pedestrians to cross disturbed areas separating walking area and work zone
- Flagger positioned to direct pedestrians



## Business Accommodations

- Business open signs
- Access maintained
- Flagger positioned to direct pedestrians and traffic
- Limited store front space



## Distribution of Public Information

- Field Personnel (Door to Door)
  - UE RPR – Underwood
  - Site Superintendent – Granese & Sons
- Message Boards
- Weekly updates to be posted on City website
- Email Distribution Lists
- For schedule service interruptions
  - Hand delivered notices



# Questions?