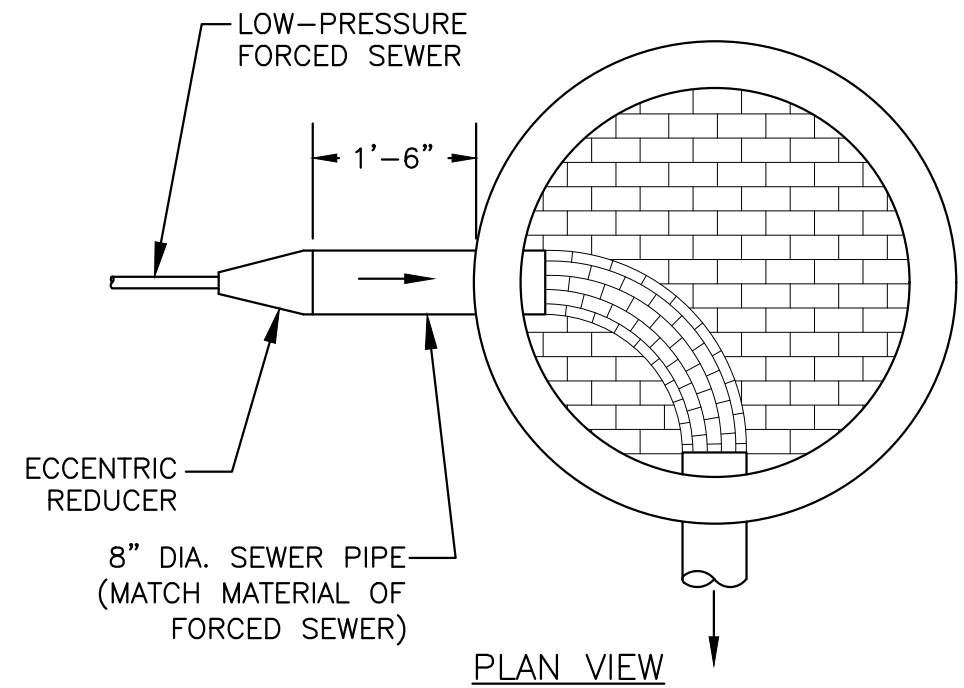


LOW PRESSURE FORCED SEWER MAIN
SCALE: N.T.S



NOTES:

- CONTRACTOR TO COORDINATE WITH CITY OF PORTSMOUTH DPW FOR REDUCER TYPE REQUIREMENTS.

PRESSURE TO GRAVITY SEWER
CONNECTION AT MANHOLE

SCALE: N.T.S

NOTES:

- SEWER PIPE SHALL BE PVC OR HDPE PRESSURE PIPE UNLESS OTHERWISE NOTED.
- SEWER PIPE SHALL HAVE 3/4" WASHED CRUSHED STONE BEDDING FOR FULL WIDTH OF TRENCH UP TO 12" ABOVE TOP OF PIPE. SAND SHALL NOT BE DIRECTLY PLACED ON CRUSHED STONE. IN THE EVENT FINELY GRADED BACKFILL OR SAND IS USED ABOVE STONE, GEOTEXTILE FABRIC SHALL BE PLACED TO SEPARATE.
- SUITABLE MATERIAL FOR TRENCH BACKFILL SHALL BE THE NATURAL MATERIAL EXCAVATED DURING CONSTRUCTION, BUT SHALL EXCLUDE DEBRIS, PIECES OF PAVEMENT, ORGANIC MATTER, TOP SOIL, ALL WET OR SOFT MUCK, PEAT OR CLAY, ALL EXCAVATED LEDGE MATERIAL, AND ALL ROCKS OVER SIX INCHES IN LARGEST DIMENSION, OR ANY MATERIALS DEEMED TO BE UNACCEPTABLE BY THE ENGINEER.
- DEPTH OF COVER SHALL BE AS INDICATED ON THE UTILITY PLANS. LESS THAN 6' COVER REQUIRES RIGID INSULATION.
- WHEN REQUIRED, 2" RIGID FOAM INSULATION SHALL BE PLACED ON TOP OF BEDDING MATERIAL. BEDDING MATERIAL SHALL BE MADE SMOOTH TO ALLOW FOAM BOARD TO SIT WITHOUT VOIDS BENEATH. FOAM SHALL BE INSTALLED THE FULL WIDTH OF THE TRENCH, NOT TO EXCEED 4' WIDE.

REFERENCES:
CITY OF PORTSMOUTH
STANDARD
TECHNICAL
SPECIFICATIONS

DEPARTMENT OF
PUBLIC WORKS
CITY OF PORTSMOUTH, NH
680 PEVERLY HILL ROAD
603-427-1530



DATE: 05/09/2025
SCALE: NONE
PROJ. NO.: N/A
APVD BY: PHR

CITY OF PORTSMOUTH
STANDARD DETAILS

LOW PRESSURE FORCED
SEWER MAIN

SHEET:
S-006