

Program / Interior Space Needs Analysis

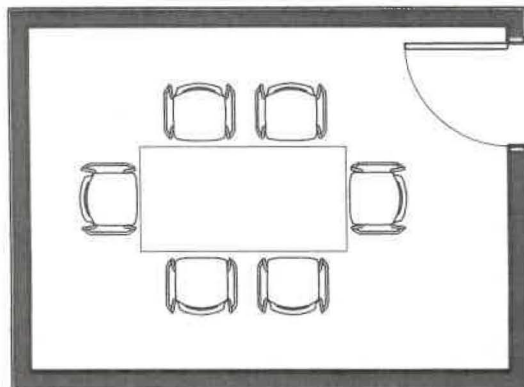
1.3 Interview / Meeting Room

Spatial Needs Assessment
Portsmouth Police Department, Portsmouth, NH
ADG Project Number:1094-23

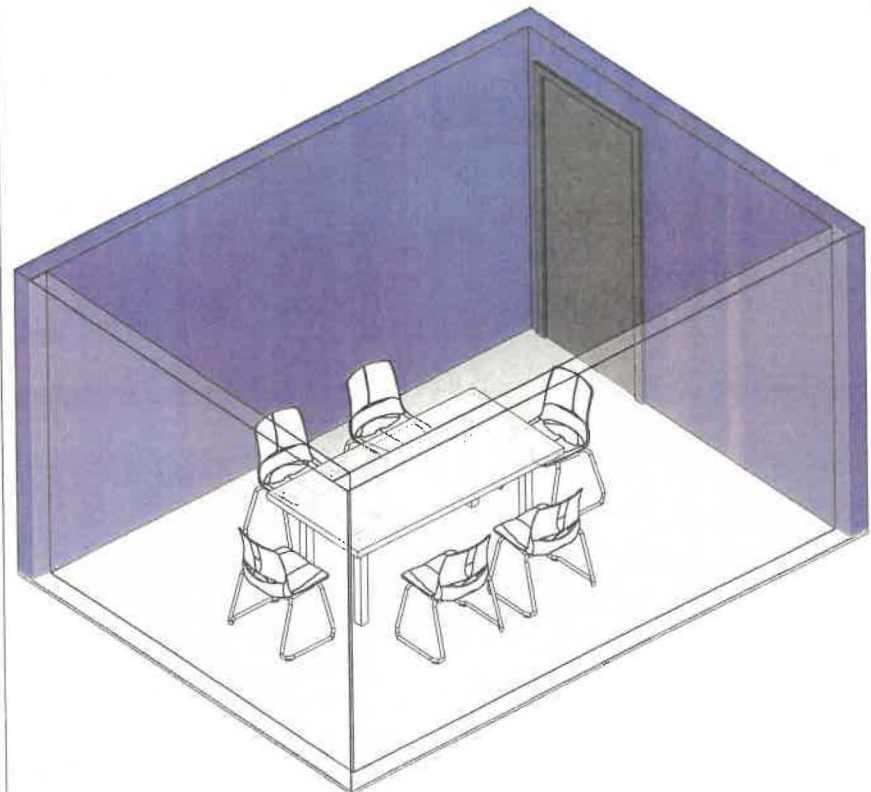
Area Standards:

Area:	140 S. F.
Dimensions:	Approximately 14'-0" x 10'-0"
Description:	Medium Interview Room
Components:	1 Table @ 36" x 72" 6 Sled-base Chairs Double-Insulated Walls (Higher STC rating)
Comments:	

Plan View



Isometric View



Program / Interior Space Needs Analysis

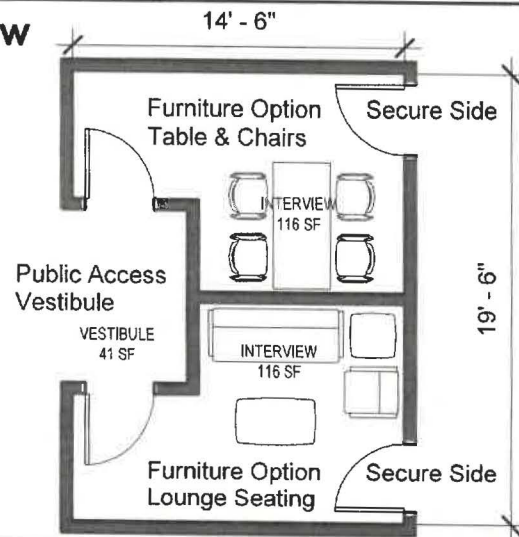
1.4 Interview Rooms w/ Vestibule

Spatial Needs Assessment
Portsmouth Police Department, Portsmouth, NH
ADG Project Number:1094-23

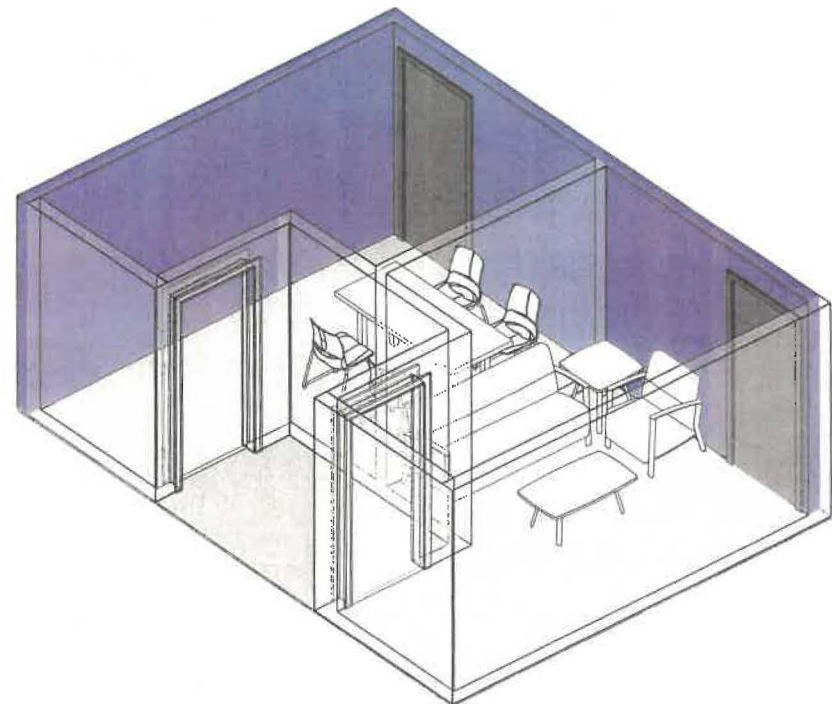
Area Standards:

Area:	280 S. F. / Interview 115 S.F.
Dimensions:	Approximately 14'-6" x 19'-6"
Description:	Interview Rooms with Vestibule 40 S.F.
Components:	1 Table @ 30" x 66" 4 Sled-base Chairs 1 Sofa @ 30" x 72" Lounge Chair @ 30" x 26" Coffee Table @ 24" x 42" End Table @ 24" x 24 Double-Insulated Walls (Higher STC Rating)
Comments:	Controlled Access to Secure Side

Plan View



Isometric View



Program / Interior Space Needs Analysis

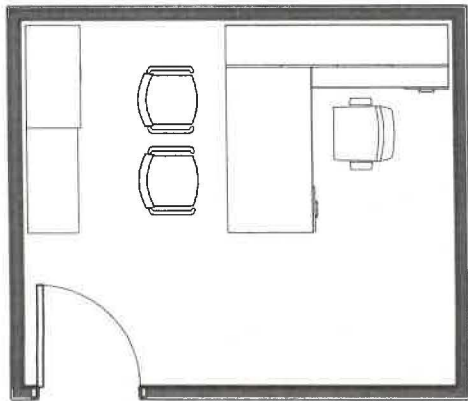
Office: 1.7 PIO/Training, 2.15 Business Office Assistant w/ Files, 2.16 Accounting Clerk w/ Files, 2.22 Accreditation Manager w/ Files, 3.3 Training Officer/Range Master, 4.3 Records Office Manager, 7.14 Supervisor's Office

Spatial Needs Assessment
Portsmouth Police Department, Portsmouth, NH
ADG Project Number: 1094-23

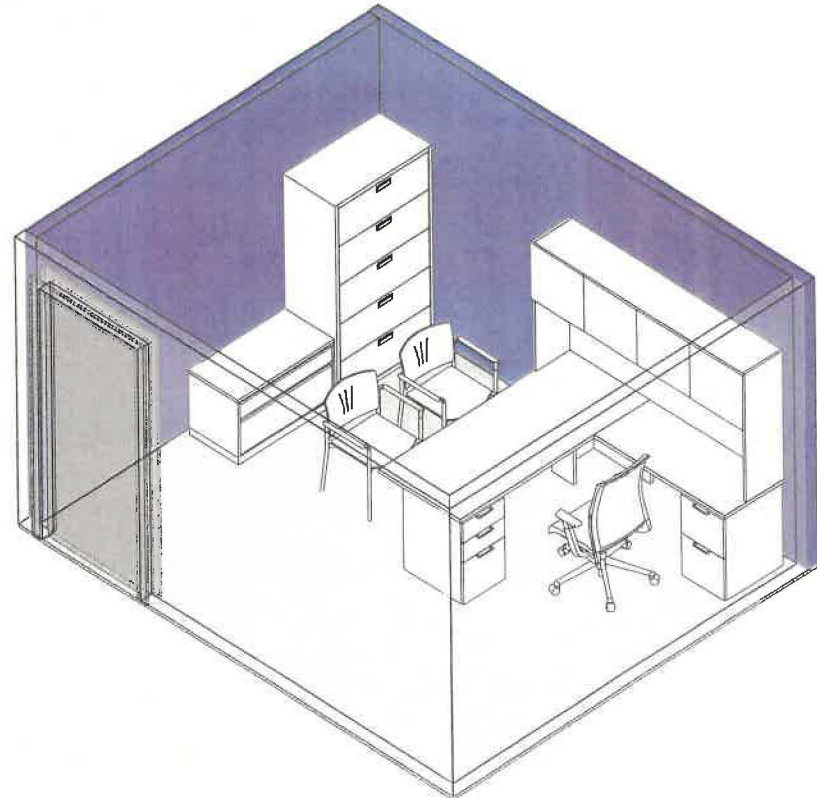
Area Standards:

Area:	120 S.F. - 160 S.F.
Dimensions:	10'-0" x 12'-0"
Description:	Enclosed Office
Components:	Desk @ 30" x 72" Return @ 22" x 48" Hutch @ 14" x 78" Task Chair (2) Guest Chairs 5 Drawer Lateral File 1.5 Drawer Lateral File
Comments:	

Plan View



Isometric View



Program / Interior Space Needs Analysis

1.4 Training / Public Accessible Meeting Room

Spatial Needs Assessment

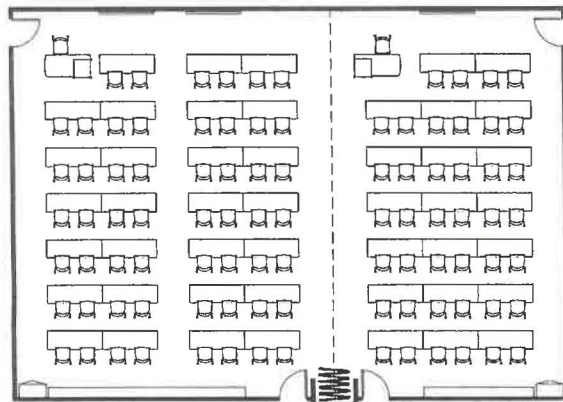
Portsmouth Police Department, Portsmouth, NH

ADG Project Number: 1094-23

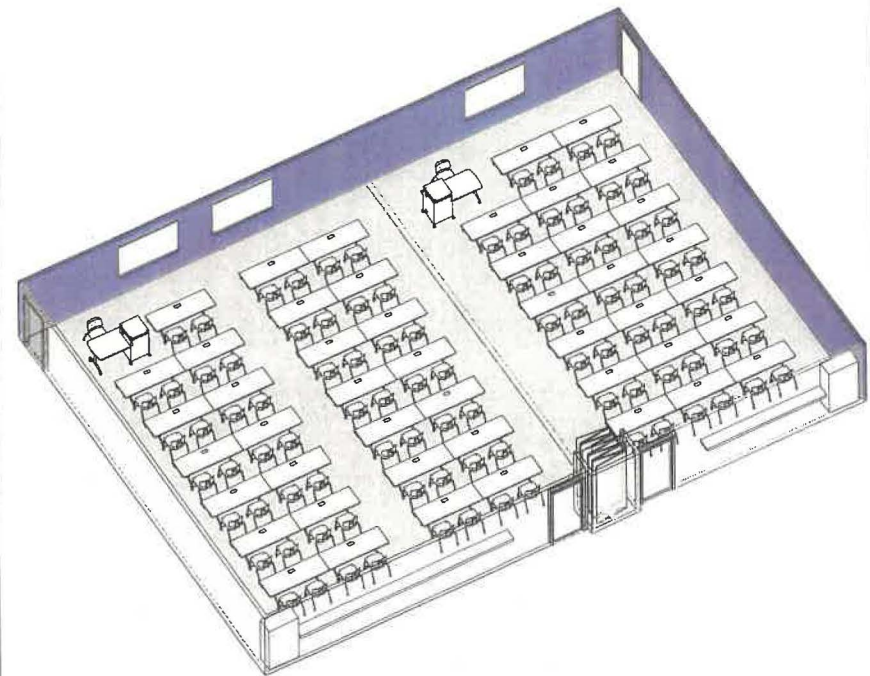
Area Standards:

Area:	2500 S.F.
Dimensions:	Approximately 60'-0" x 42'-0"
Description:	Training/Meeting Room
Components:	Tables - 47 @ 24" x 72", Powered 2 Instructor Table/Podiums Stacking Chairs - 96 3 Monitors 2 Projection Screens Movable Partition Wall 2 Storage Cabinets Catering Counter
Comments:	Acoustically-treated walls and ceiling

Plan View



Isometric View



Program / Interior Space Needs Analysis

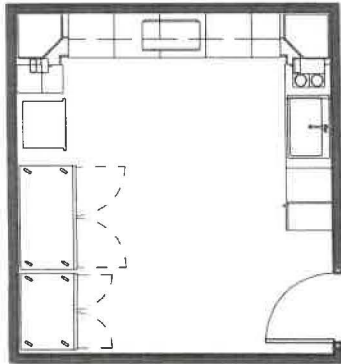
1.9 Catering Prep Room

Spatial Needs Assessment
Portsmouth Police Department, Portsmouth, NH
ADG Project Number:1094-23

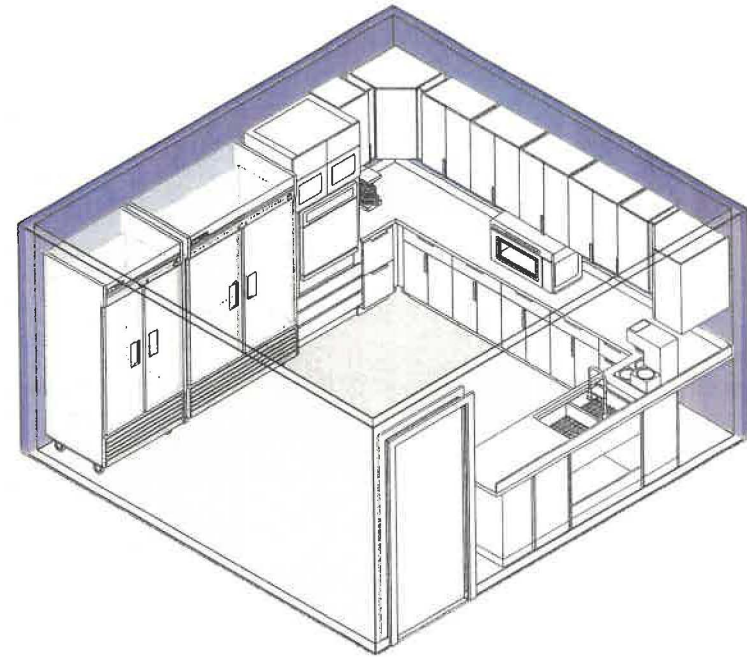
Area Standards:

Area:	200 S.F.
Dimensions:	Approximately 14'-0" x 15'-0"
Description:	Catering Prep Room
Components:	Commercial Refrigerator Commercial Freezer Under-Counter Ice Maker Convection Wall Oven Microwave Coffee Maker, Coffee Pot 2-Compartment Sink
Comments:	

Plan View



Isometric View



Program / Interior Space Needs Analysis

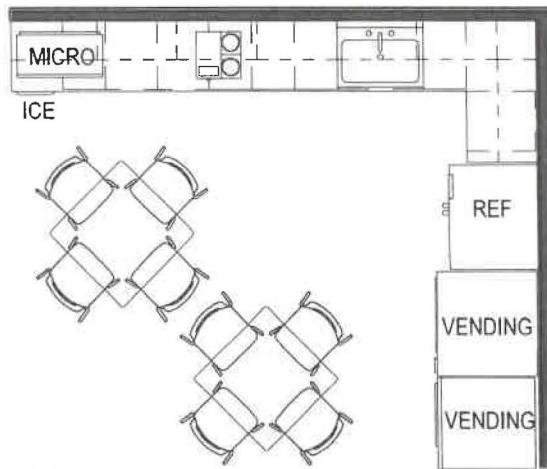
1.13 Break Room / Vending

Spatial Needs Assessment
Portsmouth Police Department, Portsmouth, NH
ADG Project Number: 1094-23

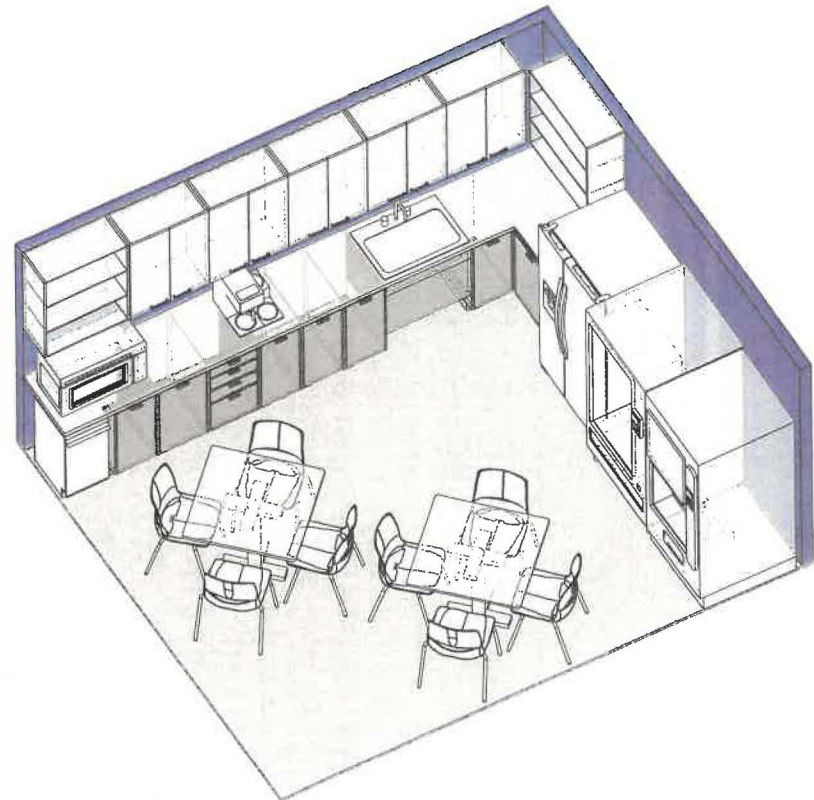
Area Standards:

Area:	200 S.F.
Dimensions:	Approximately 13'-0" x 15'-0"
Description:	Break Area with Seating
Components:	2 Tables @ 3'-0" x 3'-0" 8 Chairs Options: Refrigerator Vending Machines Microwave Coffee Maker Under-Counter Ice Maker
Comments:	

Plan View



Isometric View



Program / Interior Space Needs Analysis

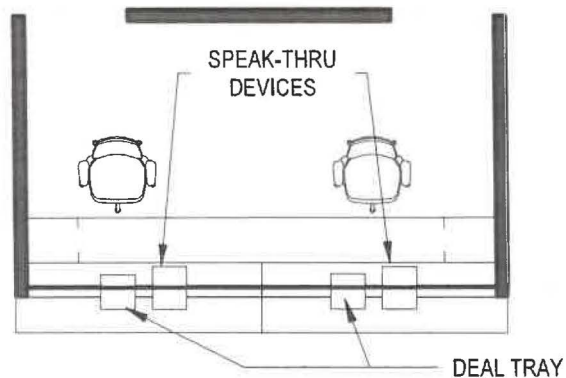
1.14 Front Desk

Spatial Needs Assessment
Portsmouth Police Department, Portsmouth, NH
ADG Project Number: 1094-23

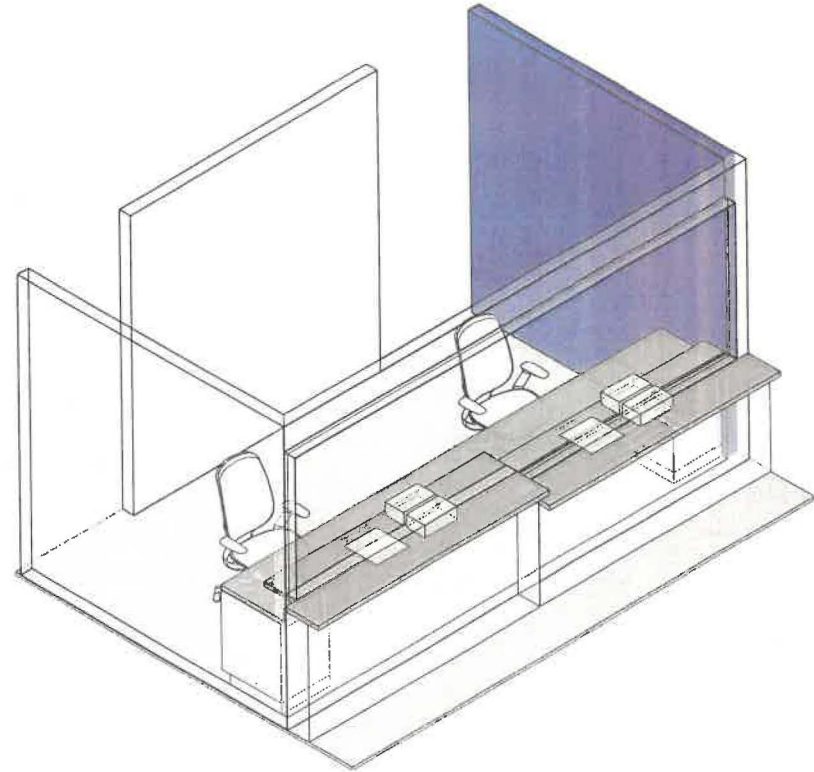
Area Standards:

Area:	120 S.F.
Dimensions:	Approximately 8'-0" x 14'-0"
Description:	Counter w/ Safety Barrier
Components:	ADA Transaction Counter @ 34" High Transaction Counter @ 39" High Work Counter @ 30" High Task Chair(s) 2 Speak-Thru Devices 2 Deal Trays Rear Logo/Media Wall
Comments:	

Plan View



Isometric View



Program / Interior Space Needs Analysis

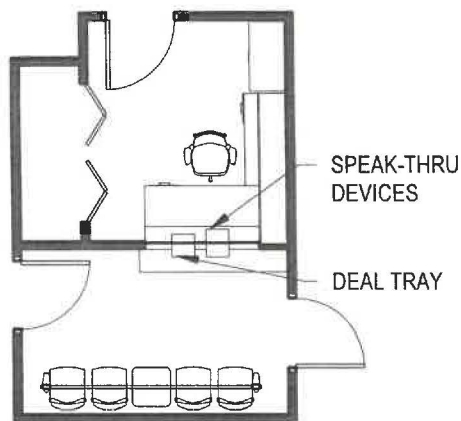
2.1 Reception/Waiting, 2.2 Admin Assistant w/Files

Spatial Needs Assessment
Portsmouth Police Department, Portsmouth, NH
ADG Project Number: 1094-23

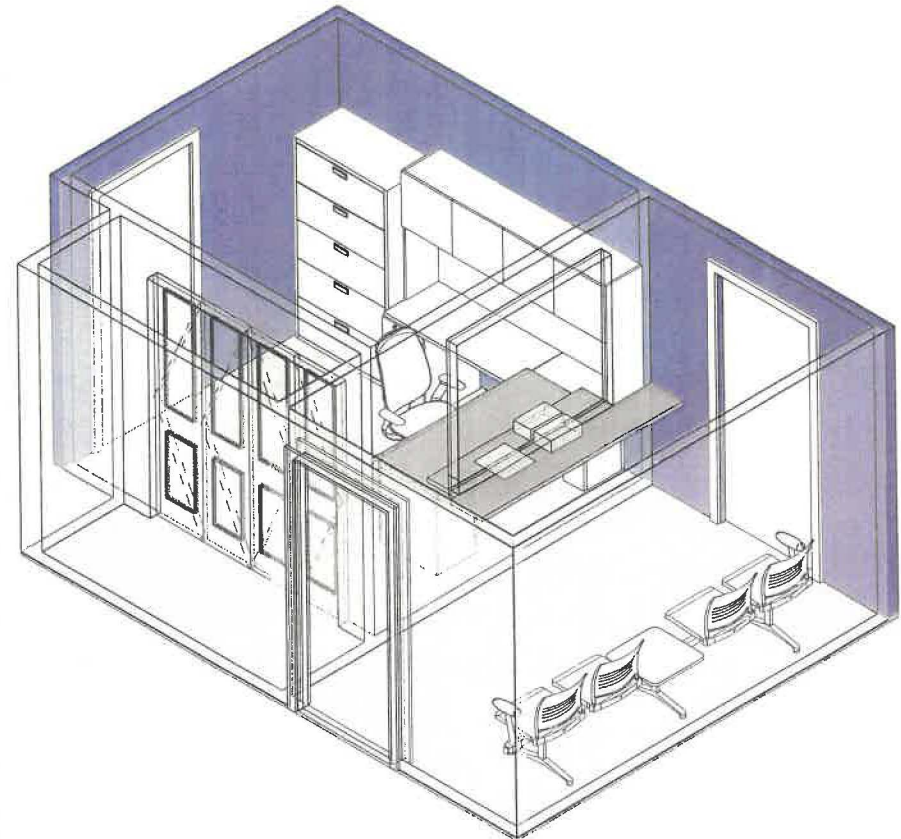
Area Standards:

Area:	140 S.F.
Dimensions:	Approximately 14'-0" x 10'-0"
Description:	Waiting / Reception
Components:	ADA Transaction Counter @ 34" High Desk-Height Work Counter Desk Return & Overhead Storage 5 Drawer Lateral File 4 Tandem Seats, 1 Table 2 Speak-Thru Devices 2 Deal Trays
Comments:	

Plan View



Isometric View



Program / Interior Space Needs Analysis

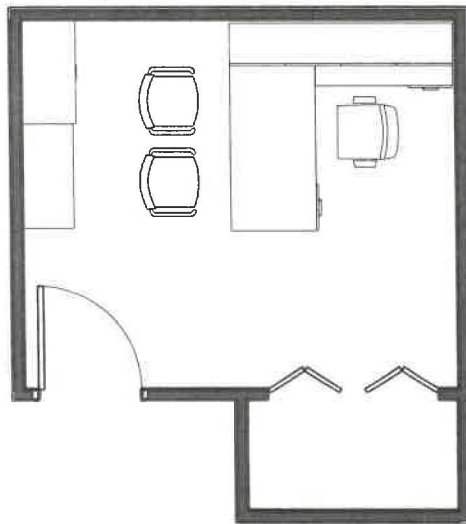
2.3 Executive Assistant w/ Files

Spatial Needs Assessment
Portsmouth Police Department, Portsmouth, NH
ADG Project Number: 1094-23

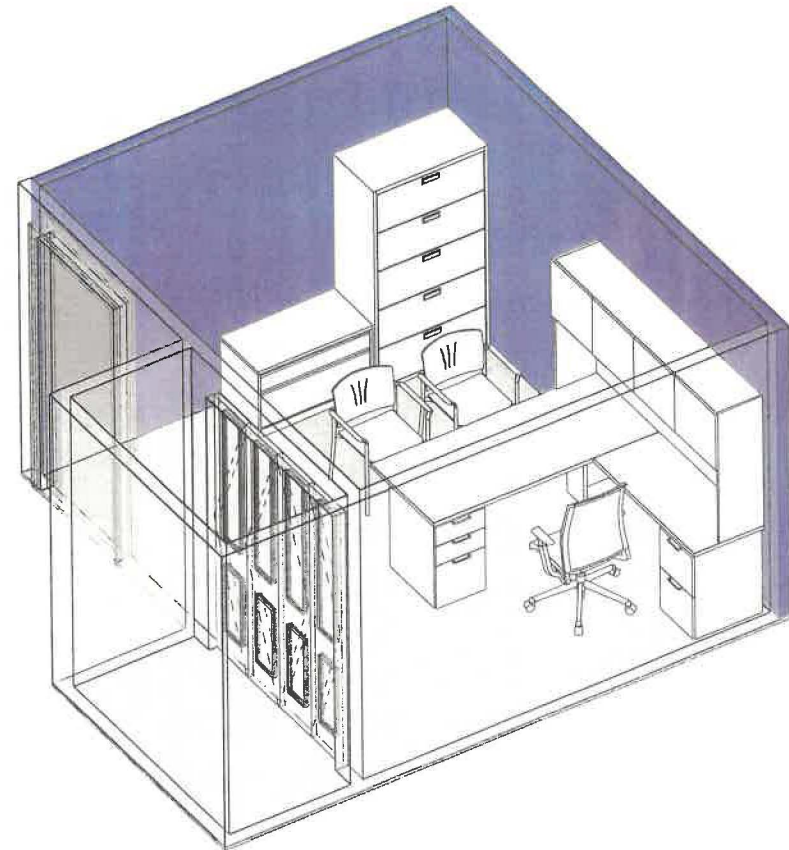
Area Standards:

Area:	120 S.F. - 160 S.F.
Dimensions:	10'-0" x 12'-0"
Description:	Enclosed Office with Closet
Components:	Desk @ 30" x 72" Return @ 22" x 48" Hutch @ 14" x 78" Task Chair (2) Guest Chairs 5 Drawer Lateral File 1.5 Drawer Lateral File
Comments:	

Plan View



Isometric View



Program / Interior Space Needs Analysis

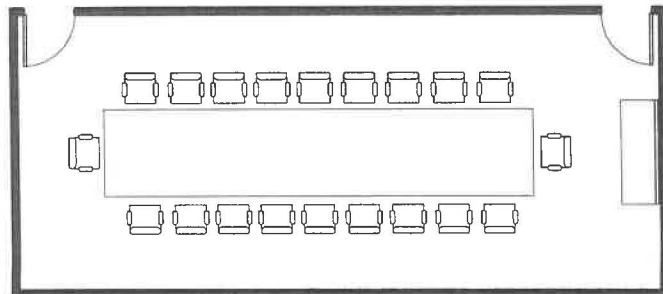
2.4 Command Staff Conference Room

Spatial Needs Assessment
Portsmouth Police Department, Portsmouth, NH
ADG Project Number: 1094-23

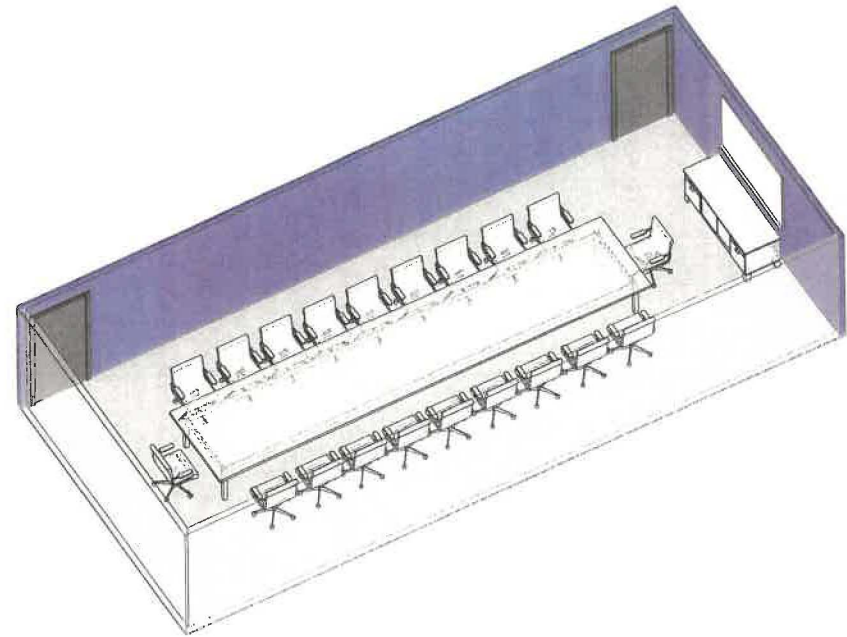
Area Standards:

Area:	600 S.F.
Dimensions:	Approximately 37'-6" x 16'-0"
Description:	Meeting Room
Components:	Conference Table @ 5' x 25' 20 Conference Chairs Credenza @ 2'-0" x 6'-0" Whiteboard / Media Board
Comments:	Acoustically-treated walls

Plan View



Isometric View



Program / Interior Space Needs Analysis

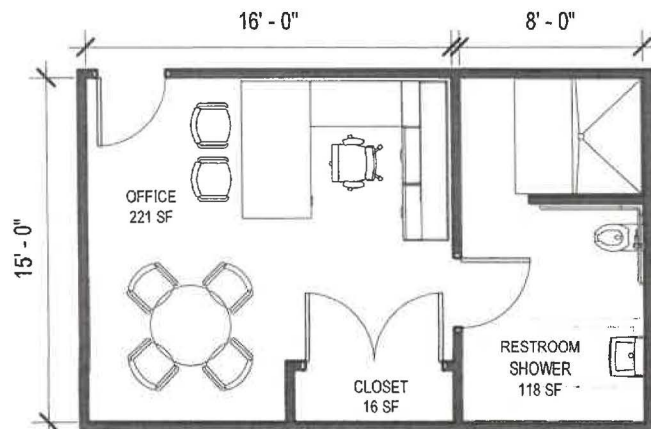
2.5 Chief of Poice / 2.6 Restroom / Shower

Spatial Needs Assessment
Portsmouth Police Department, Portsmouth, NH
ADG Project Number: 1094-23

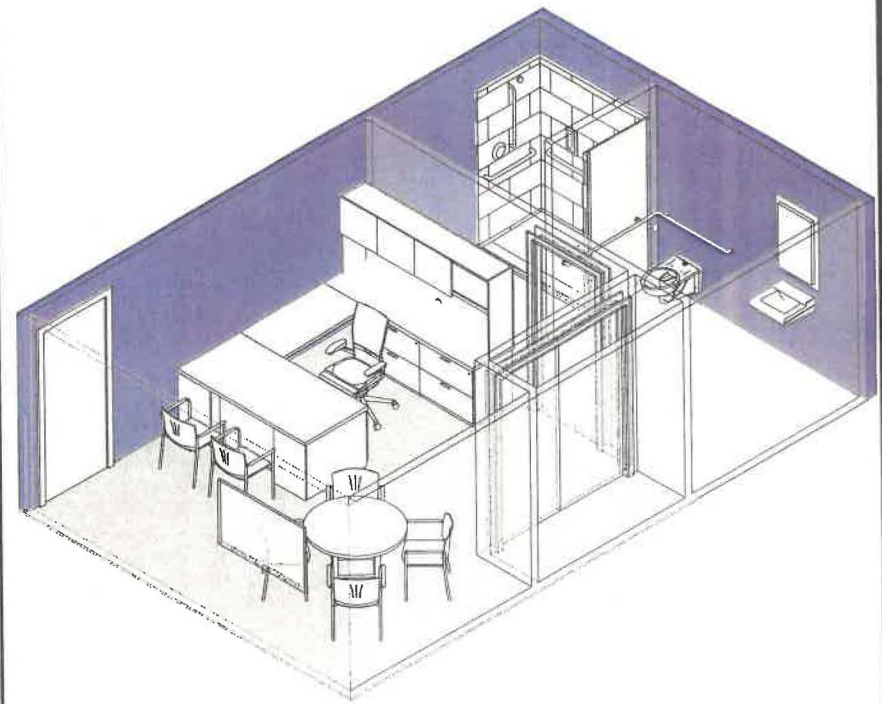
Area Standards:

Area:	360 S.F.
Dimensions:	Approximately 24'-6" x 15'-0"
Description:	Enclosed Office & Private Restroom
Components:	Desk with Bridge, Credenza, Hutch: Desk @ 36" x 72" Bridge @ 24" x 4'-0" Credenza w/Hutch @ 24" x 84" Executive Task Chair 6 Guest Chairs Work Table @ 42" diameter Storage Closet Restroom with Shower
Comments:	Monitor or Smartboard

Plan View



Isometric View



Program / Interior Space Needs Analysis

2.7 Deputy Chief's Office

Spatial Needs Assessment
Portsmouth Police Department, Portsmouth, NH
ADG Project Number: 1094-23

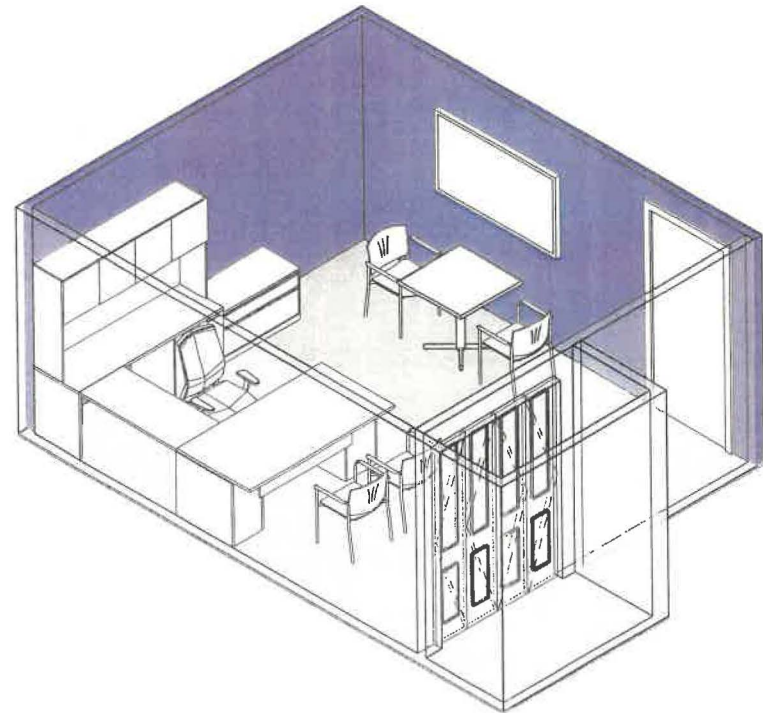
Area Standards:

Area:	200 S.F.
Dimensions:	14'-0" x 16'-0"
Description:	Private Office with Closet
Components:	Desk - 36"d x 72"w Return - 22"d x 48"w Credenza - 22"d x 72"w Overhead Storage - 14"d x 72"w Manager's Task Chair 2 Guest Chairs TV Monitor 1.5 Drawer Lateral File
Comments:	

Plan View



Isometric View



Program / Interior Space Needs Analysis

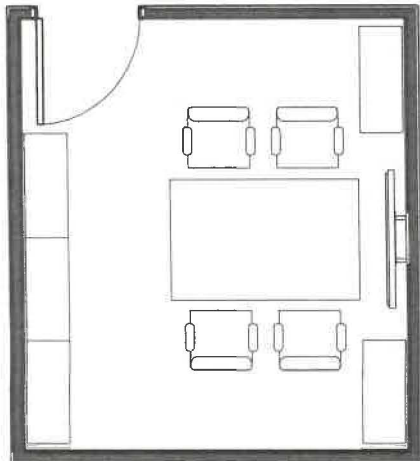
2.8 Small Conference Room / Library

Spatial Needs Assessment
Portsmouth Police Department, Portsmouth, NH
ADG Project Number: 1094-23

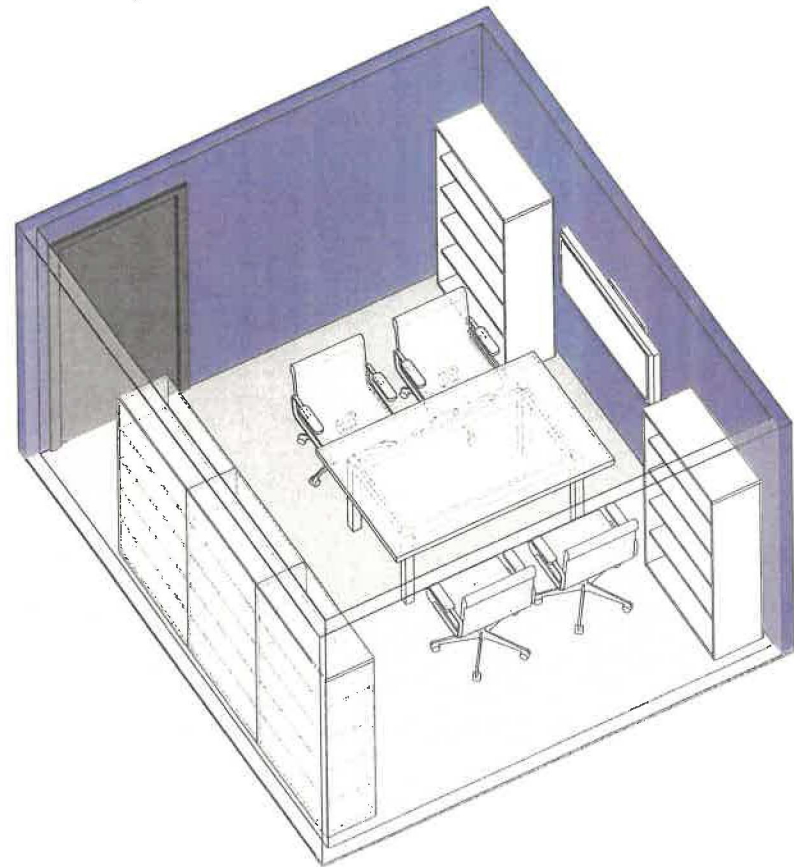
Area Standards:

Area:	140 S.F.
Dimensions:	Approximately 11'-3" x 12'-6"
Description:	Meeting Room
Components:	Conference Table @ 42" x 66" 4 Conference Chairs 5 Bookshelves - 36"W x 5-high Monitor
Comments:	Acoustically-Treated Walls

Plan View



Isometric View



Program / Interior Space Needs Analysis

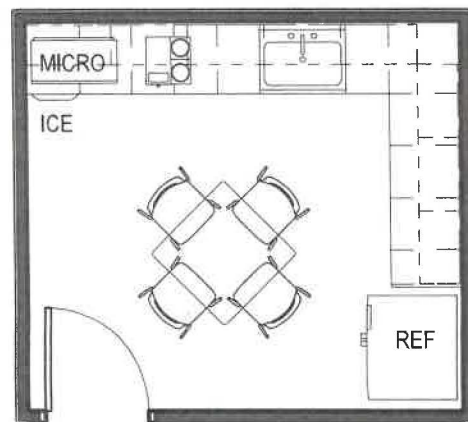
2.9 Small Break Room

Spatial Needs Assessment
Portsmouth Police Department, Portsmouth, NH
ADG Project Number: 1094-23

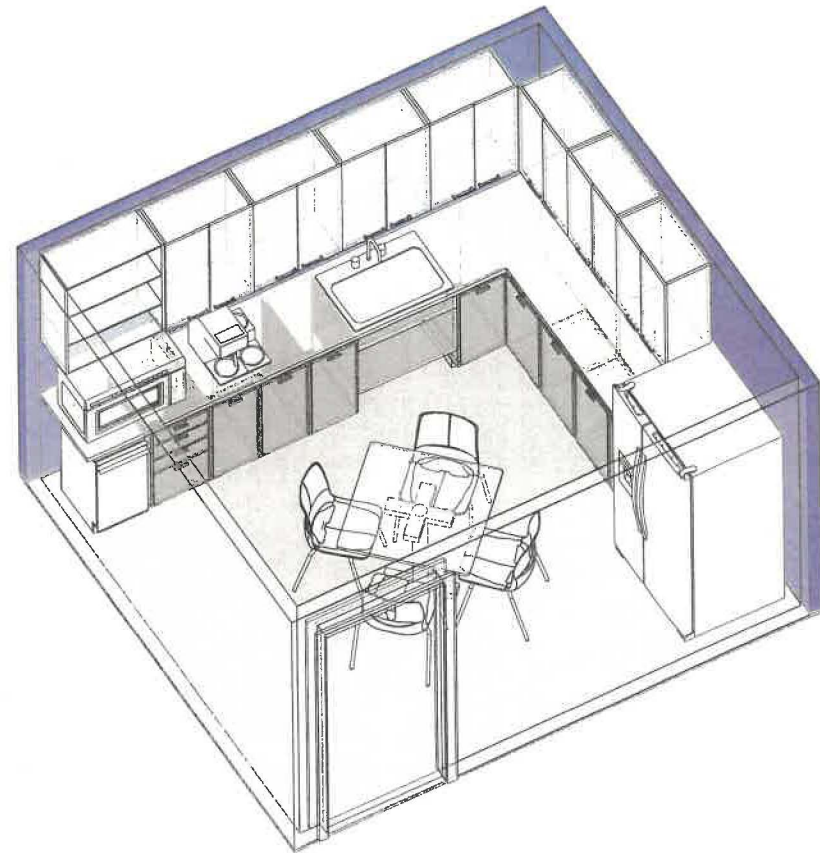
Area Standards:

Area:	140 S.F.
Dimensions:	Approximately 12'-6" x 11'-3"
Description:	Break Area with Seating
Components:	1 Table 3'-0" x 3'-0" 4 Chairs Refrigerator Microwave Coffee Maker Optional: Ice Machine
Comments:	

Plan View



Isometric View



Program / Interior Space Needs Analysis

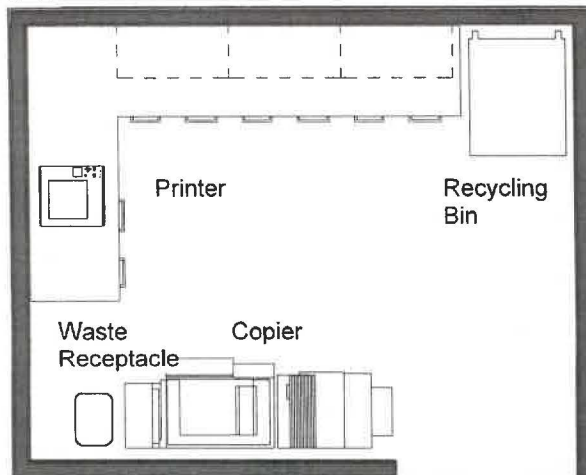
2.11 & 4.2 Copy / Workroom

Spatial Needs Assessment
Portsmouth Police Department, Portsmouth, NH
ADG Project Number: 1094-23

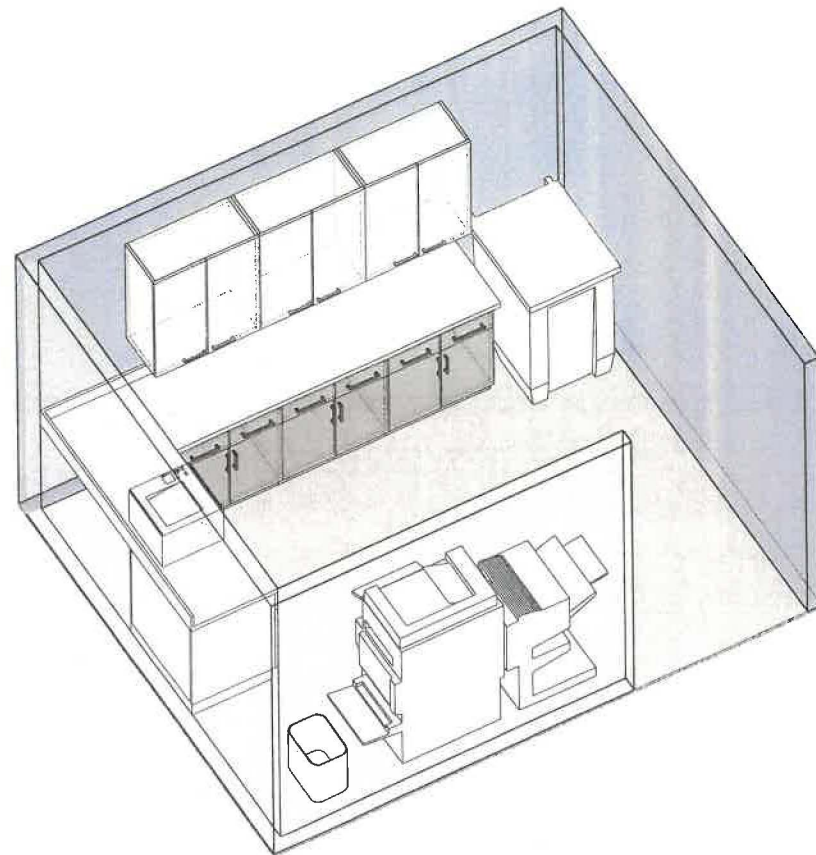
Area Standards:

Area:	120 S.F. - 140 S.F.
Dimensions:	Approximately 12'-0" x 10'-0"
Description:	Small Work Area
Components:	L-Shape Counter & Cabinets Copier Printer Recycling Bin Waste Receptacle
Comments:	

Plan View



Isometric View



Program / Interior Space Needs Analysis

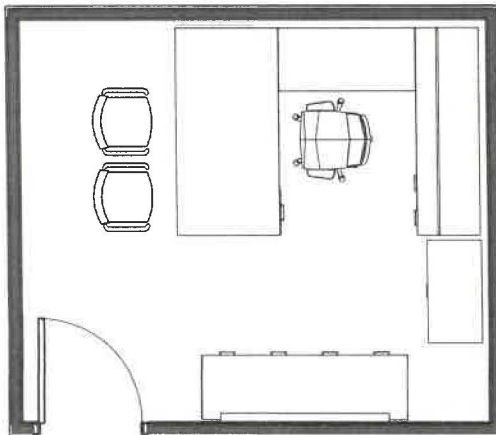
Office: 2.14 Business Manager, 2.21/3.4 Lieutenant, 5.8
Shift Commander, 5.10 Captain

Spatial Needs Assessment
Portsmouth Police Department, Portsmouth, NH
ADG Project Number: 1094-23

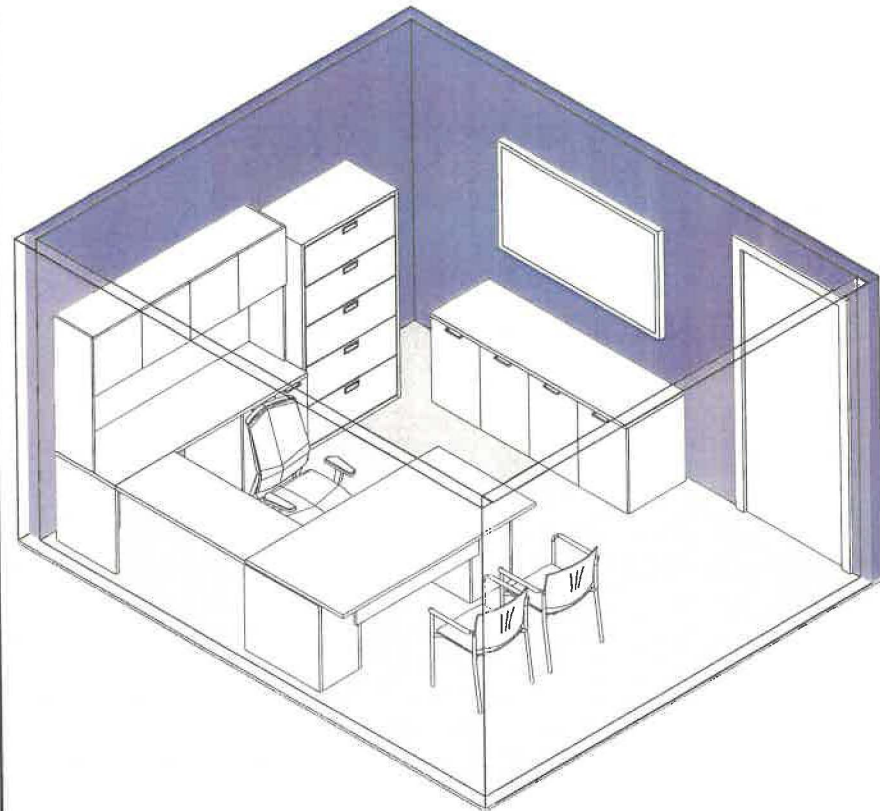
Area Standards:

Area:	160 S.F. - 200 S.F.
Dimensions:	12'-0" x 14'-0"
Description:	Private Office
Components:	Desk - 36"d x 72"w Return - 22"d x 48"w Credenza - 22"d x 72"w Overhead Storage - 14"d x 72"w Manager's Task Chair 2 Guest Chairs TV Monitor 5 Drawer Lateral File 1.5 Drawer Lateral File
Comments:	

Plan View



Isometric View



Program / Interior Space Needs Analysis

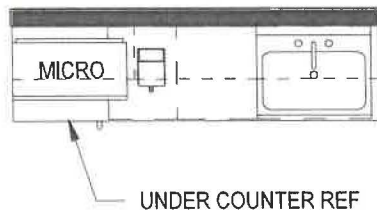
3.7 Break Alcove

Spatial Needs Assessment
Portsmouth Police Department, Portsmouth, NH
ADG Project Number: 1094-23

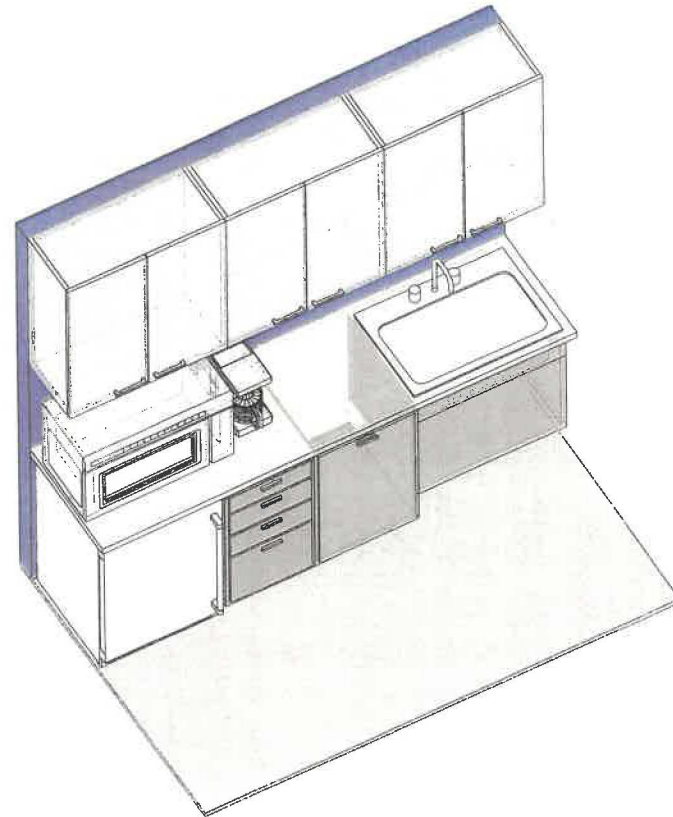
Area Standards:

Area:	40 S.F.
Dimensions:	Approximately 8'-0" x 5'-0"
Description:	Coffee Bar
Components:	Options: Under-Counter Refrigerator Microwave Coffee Maker
Comments:	

Plan View



Isometric View



Program / Interior Space Needs Analysis

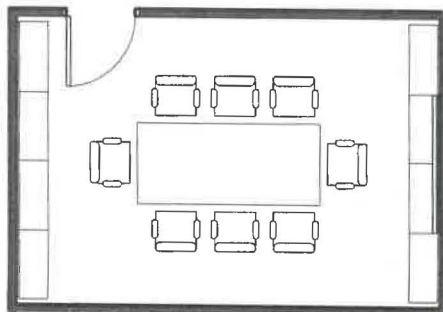
3.8 Small Conference Room / Library

Spatial Needs Assessment
Portsmouth Police Department, Portsmouth, NH
ADG Project Number: 1094-23

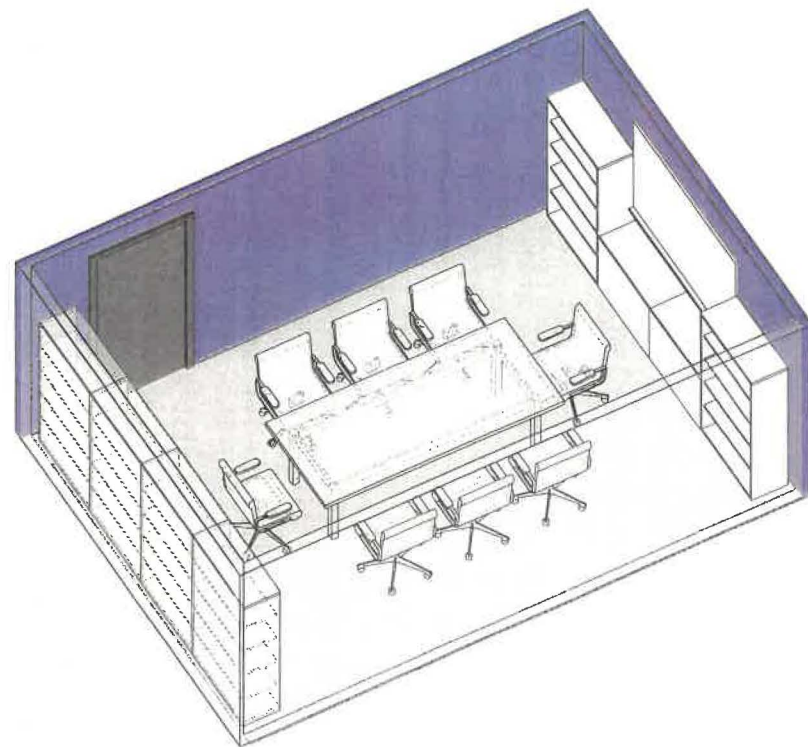
Area Standards:

Area:	200 S.F.
Dimensions:	Approximately 16'-0" x 12'-6"
Description:	Meeting Room
Components:	Conference Table @ 3'-6" x 8'-0" 8 Conference Chairs 2 Bookshelves - 36"W x 2-high 6 Bookshelves - 36"W x 5-high White Board / Media Board
Comments:	Acoustically-Treated Walls

Plan View



Isometric View



Program / Interior Space Needs Analysis

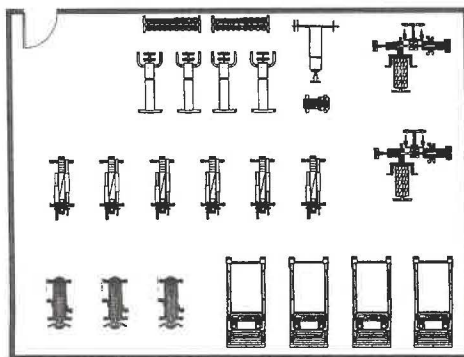
3.9 Physical Agility (Gym)

Spatial Needs Assessment
Portsmouth Police Department, Portsmouth, NH
ADG Project Number: 1094-23

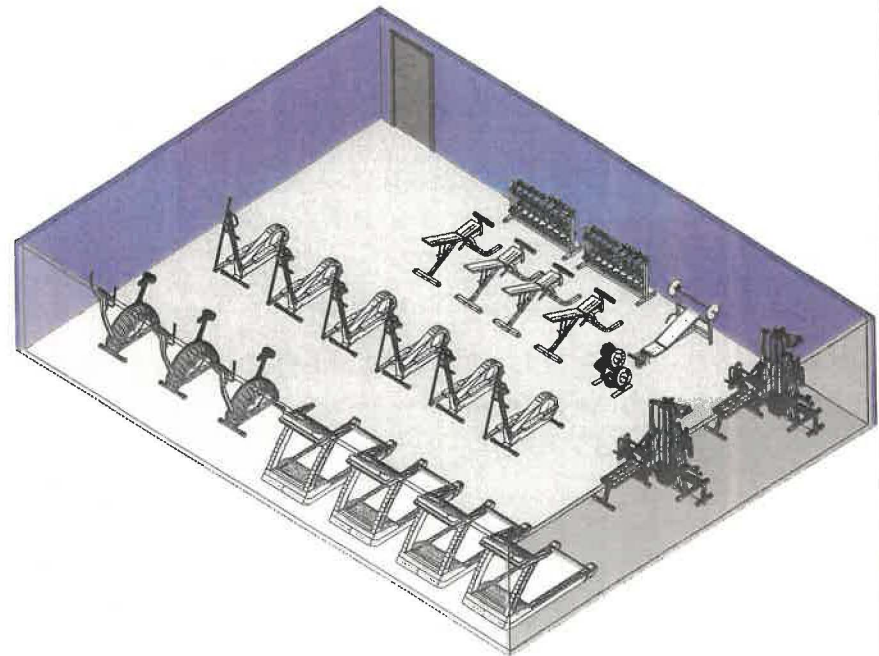
Area Standards:

Area:	1000 S.F. - 1500 S.F.
Dimensions:	Approximately 30'-0" x 40'-0"
Description:	Exercise Area
Components:	Exercise Bikes Ellipticals Treadmill Universal Weight Machine Universal Bench Bench Press
Comments:	

Plan View



Isometric View



Program / Interior Space Needs Analysis

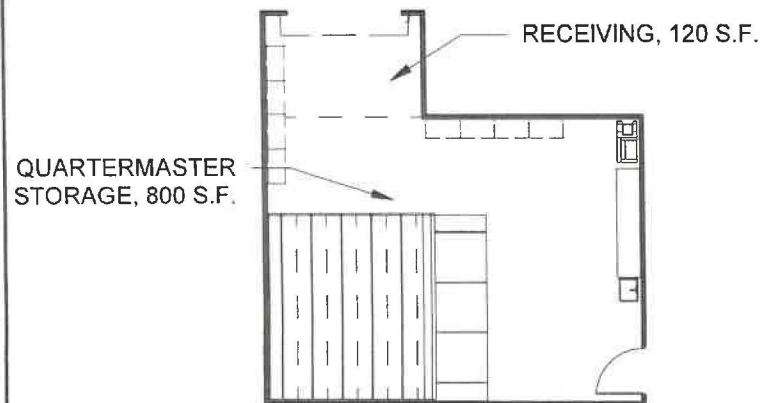
3.14 Quartermaster Storage, 3.15 Receiving

Spatial Needs Assessment
Portsmouth Police Department, Portsmouth, NH
ADG Project Number: 1094-23

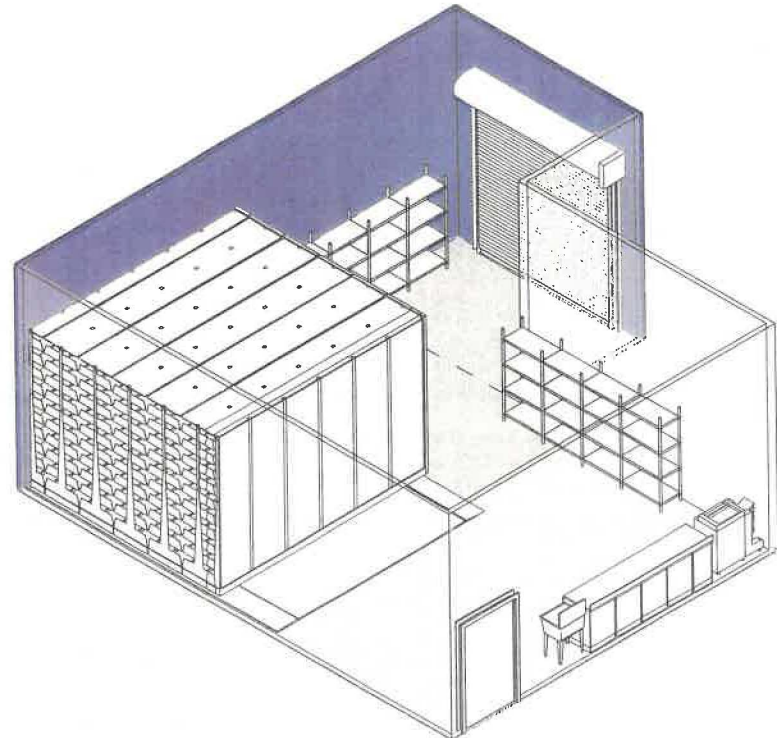
Area Standards:

Area:	800 S.F. - 920 S.F.
Dimensions:	Approximately 25'-0" x 33'-0"
Description:	Quartermaster Storage & Receiving
Components:	Copier/Printer Utility Sink High Density Storage Unit 4-Post Industrial Shelving
Comments:	

Plan View



Isometric View



Program / Interior Space Needs Analysis

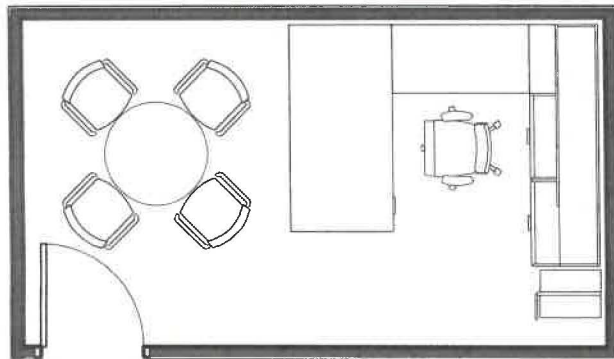
4.6 Prosecutor's Office

Spatial Needs Assessment
Portsmouth Police Department, Portsmouth, NH
ADG Project Number: 1094-23

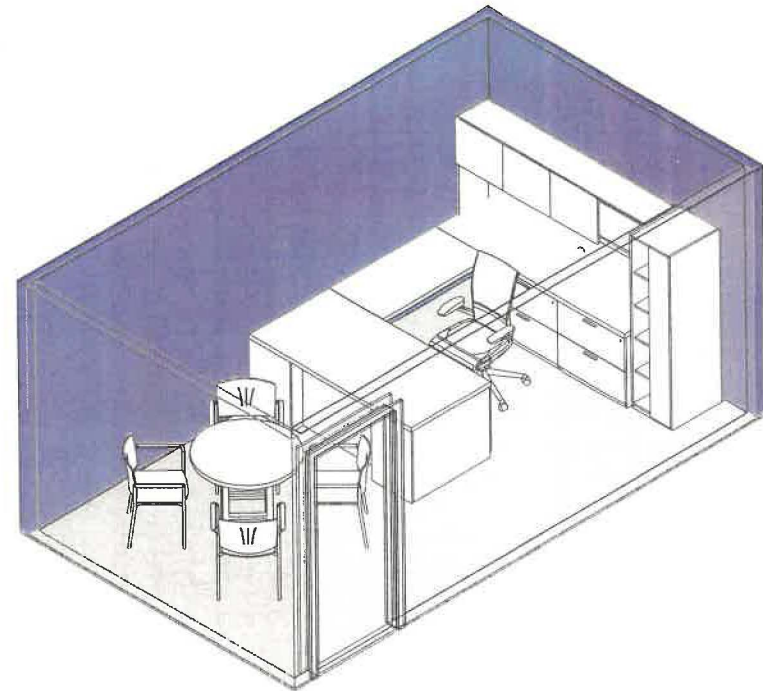
Area Standards:

Area:	160 S.F.
Dimensions:	Approximately 17'-0" x 9'-6"
Description:	Enclosed Office
Components:	Desk with Bridge, Credenza, Hutch: Desk @ 36" x 72" Bridge @ 24" x 4'-0" Credenza w/Hutch @ 24" x 84" Executive Task Chair 4 Guest Chairs Work Table @ 36" diameter Wardrobe / Shelf Cabinet
Comments:	

Plan View



Isometric View



Program / Interior Space Needs Analysis

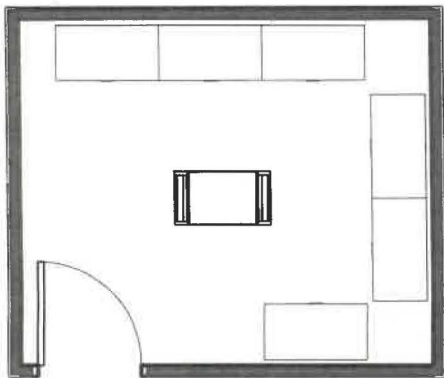
4.9 Records / File Storage Room

Spatial Needs Assessment
Portsmouth Police Department, Portsmouth, NH
ADG Project Number: 1094-23

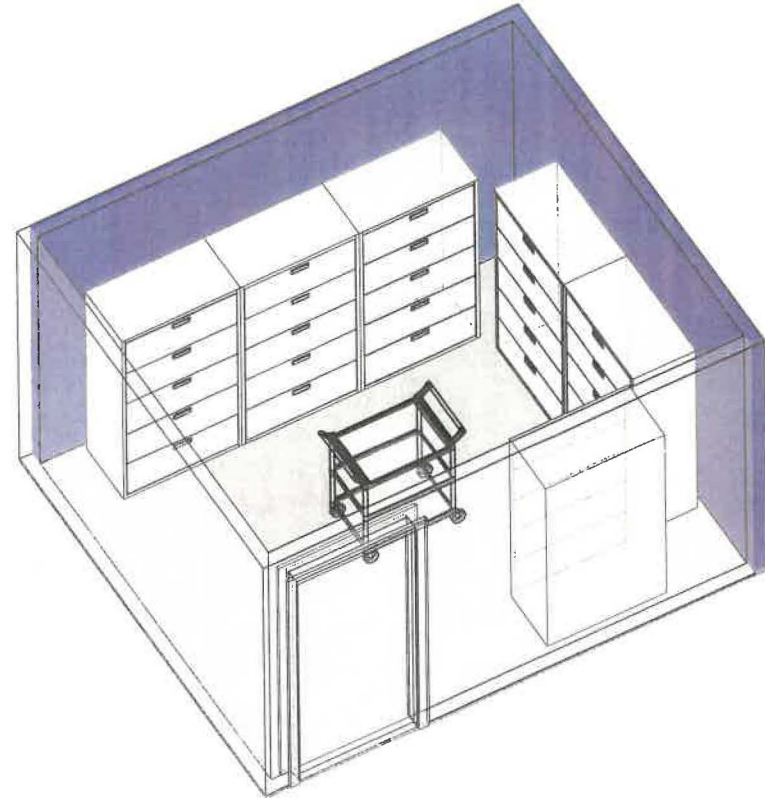
Area Standards:

Area:	120 S. F.
Dimensions:	Approximately 12'-0" x 10'-0"
Description:	File Storage
Components:	6 Lateral File Cabinets @ 3'-0" x 1'-7" x Five drawers high 1 Utility Cart
Equipment:	

Plan View



Isometric View



Program / Interior Space Needs Analysis

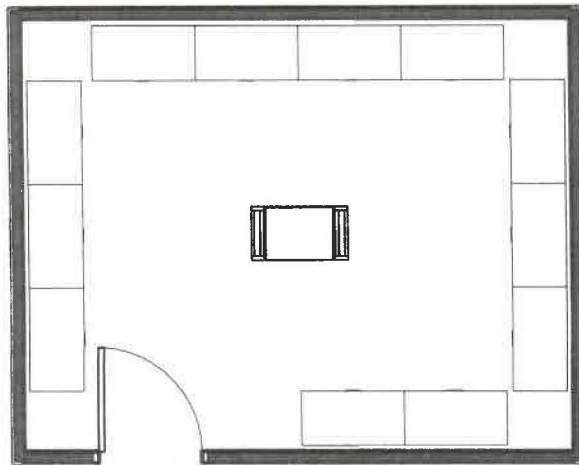
4.10 Secured Archive Storage Room

Spatial Needs Assessment
Portsmouth Police Department, Portsmouth, NH
ADG Project Number: 1094-23

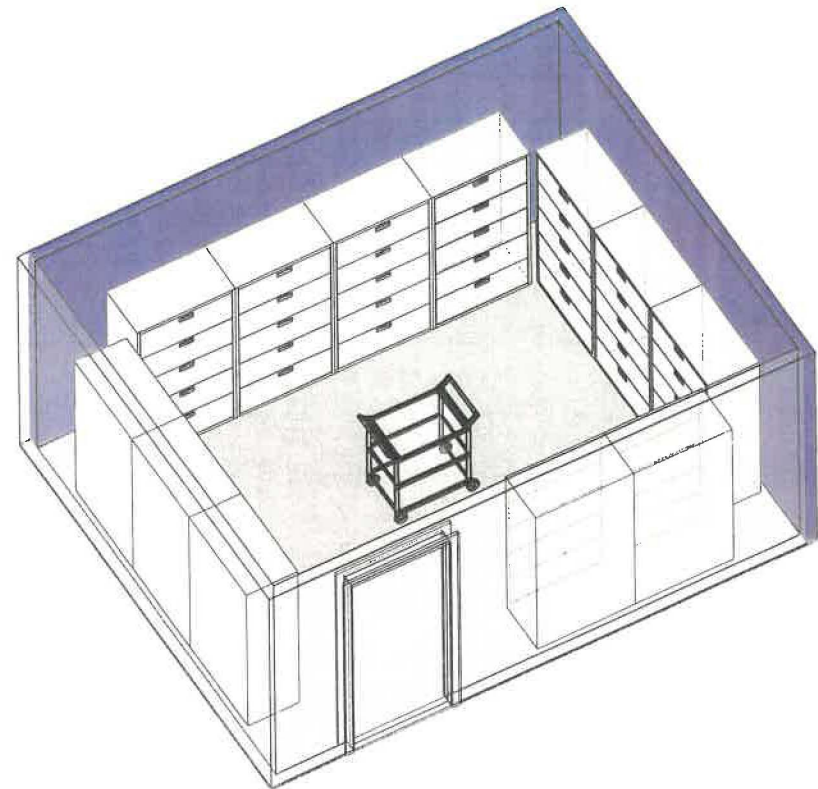
Area Standards:

Area:	200 S. F.
Dimensions:	Approximately 16'-0" x 12'-6"
Description:	File Storage
Components:	12 Lateral File Cabinets @ 3'-0" x 1'-7" x Five drawers high 1 Utility Cart
Equipment:	

Plan View



Isometric View



Program / Interior Space Needs Analysis

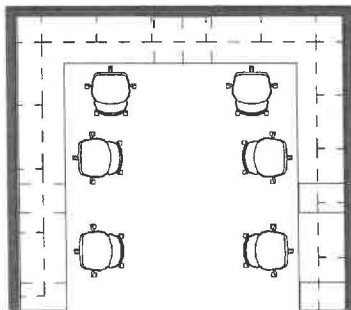
5.4 Report Writing

Spatial Needs Assessment
Portsmouth Police Department, Portsmouth, NH
ADG Project Number: 1094-23

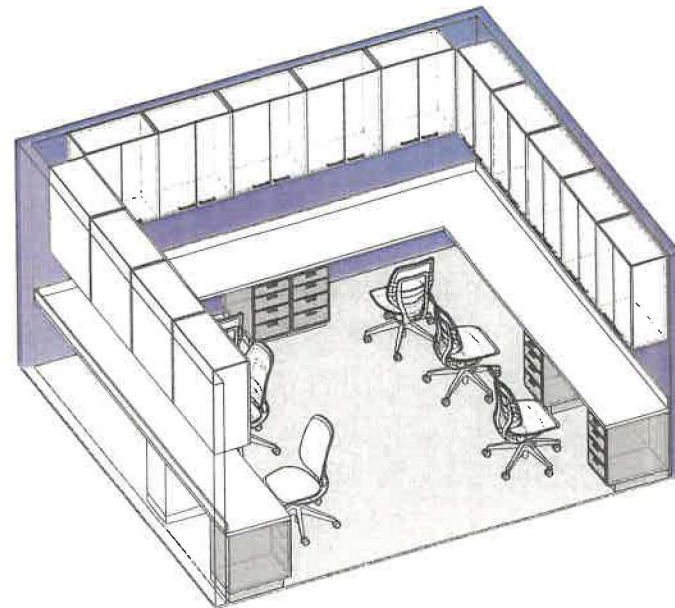
Area Standards:

Area:	180 S.F.
Dimensions:	Approximately 13'-0" x 14'-0"
Description:	Work Area with Seating
Components:	6 Task Chairs Options: Under-Cabinet Lighting Mobile or Built-In Pedestals
Comments:	

Plan View



Isometric View



Program / Interior Space Needs Analysis

5.5 Mail Room / Business Hub

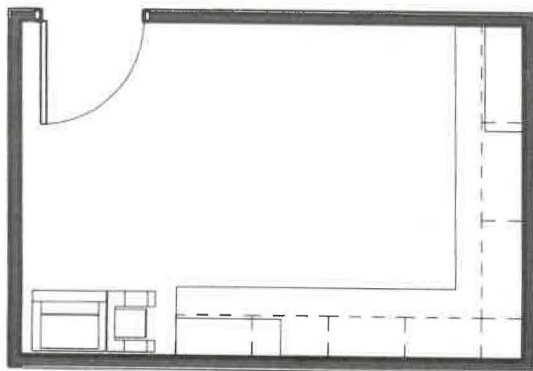
Spatial Needs Assessment
Portsmouth Police Department, Portsmouth, NH
ADG Project Number: 1094-23

Area Standards:

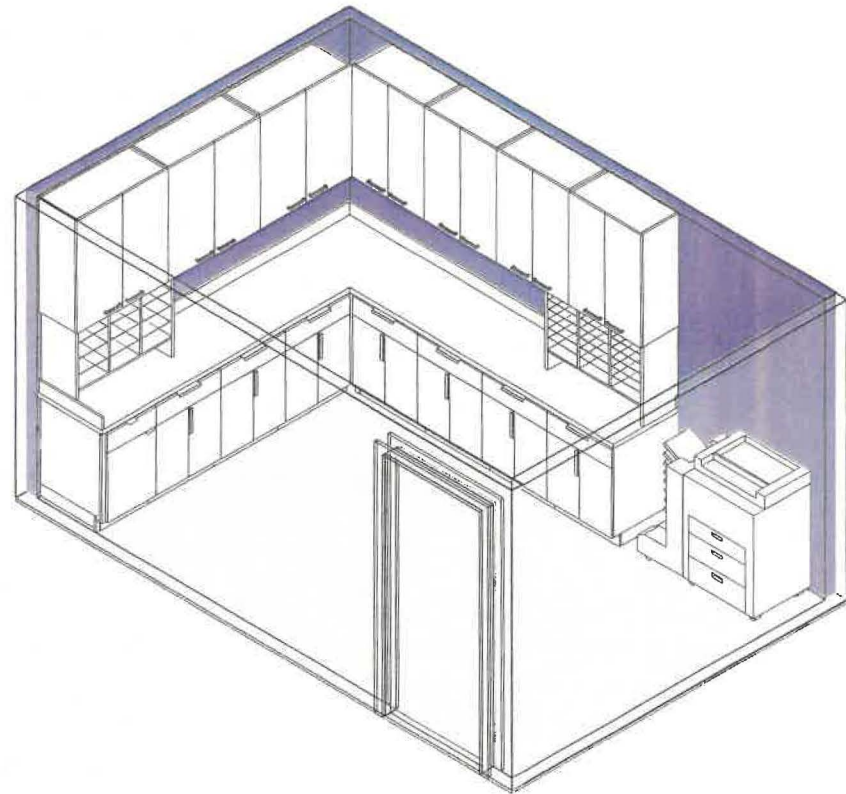
Area:	140 S.F.
Dimensions:	Approximately 10'-0" x 14'-0"
Description:	Mail Room & Business Hub
Components:	Wall & Base Cabinets Mail Sorter(s) Copier / Printer

Comments:

Plan View



Isometric View



Program / Interior Space Needs Analysis

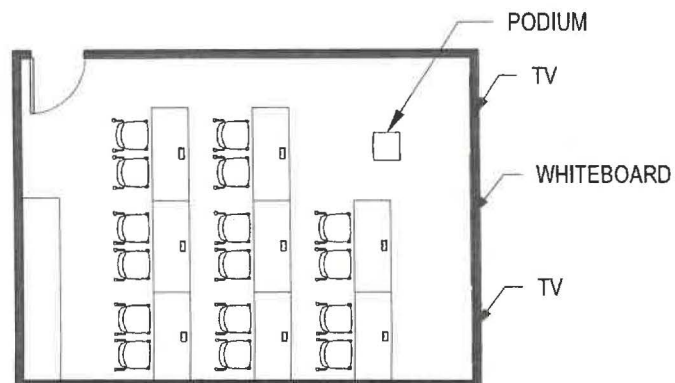
5.6 Roll Call

Spatial Needs Assessment
Portsmouth Police Department, Portsmouth, NH
ADG Project Number: 1094-23

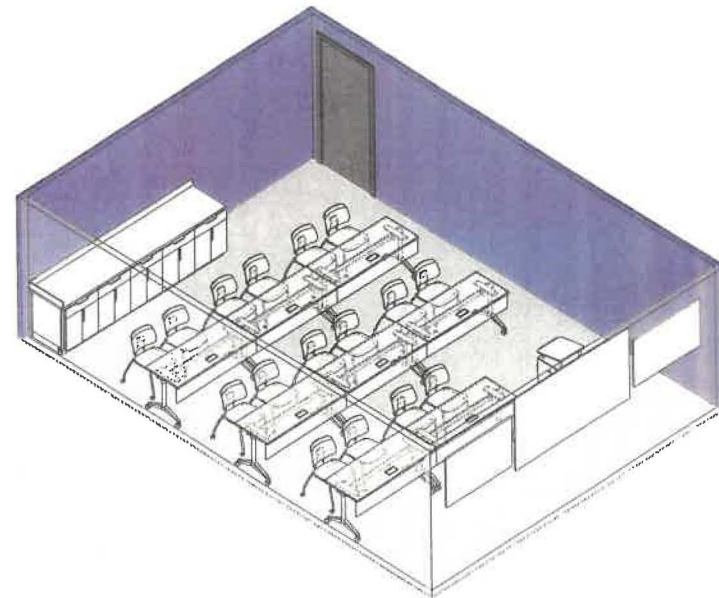
Area Standards:

Area:	400 S.F.
Dimensions:	Approximately 18'-0" x 25'-0"
Description:	Meeting and Training Room
Components:	8 Tables @ 24" x 60" 16 Chairs Podium 2 Monitors / TVs White Board/Media Board
Comments:	

Plan View



Isometric View



Program / Interior Space Needs Analysis

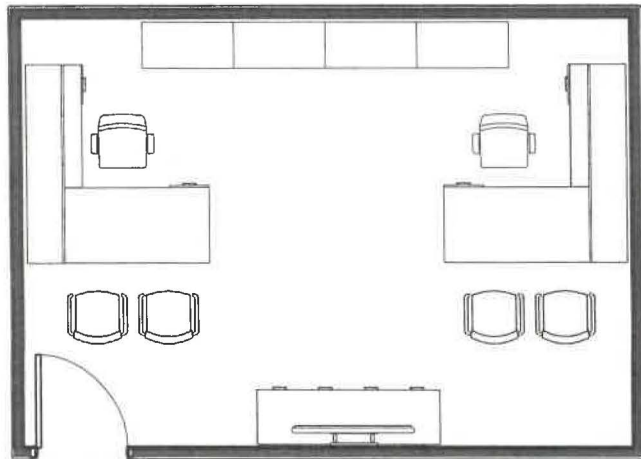
5.7 Sergeant's Office - Two Person

Spatial Needs Assessment
Portsmouth Police Department, Portsmouth, NH
ADG Project Number: 1094-23

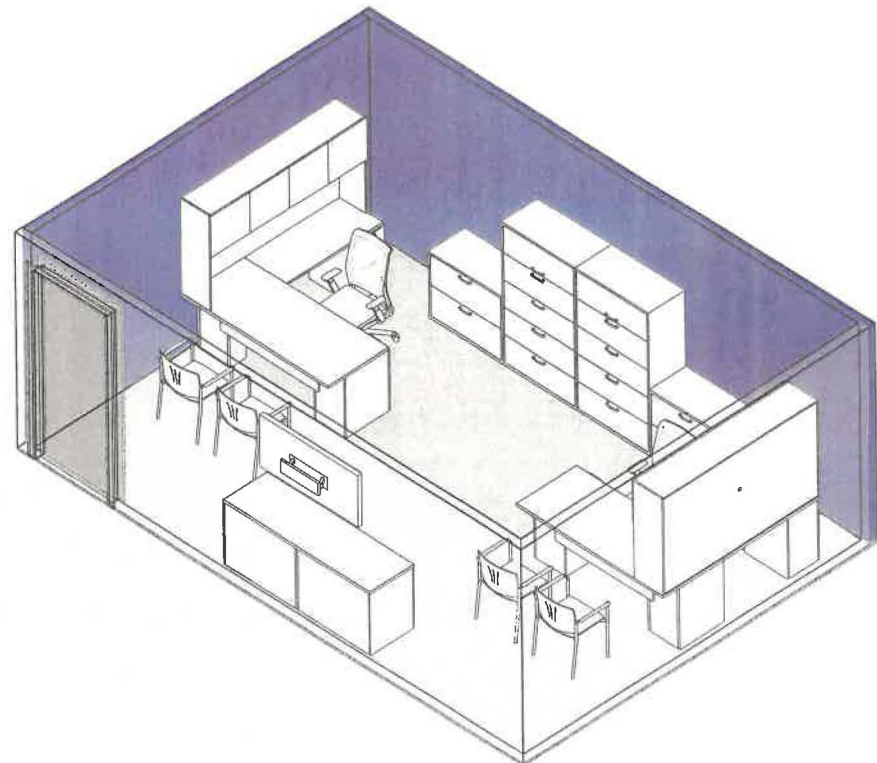
Area Standards:

Area:	280 S.F.
Dimensions:	20'-0" x 14'-0"
Description:	Enclosed Office
Components:	Each Person's Area: Desk @ 30" x 72" Return @ 22" x 48" Hutch @ 14" x 78" Task Chair 2 Guest Chairs 5-Drawer Lateral File 2-Drawer Lateral File Storage Credenza
Comments:	Optional Monitors

Plan View



Isometric View



Program / Interior Space Needs Analysis

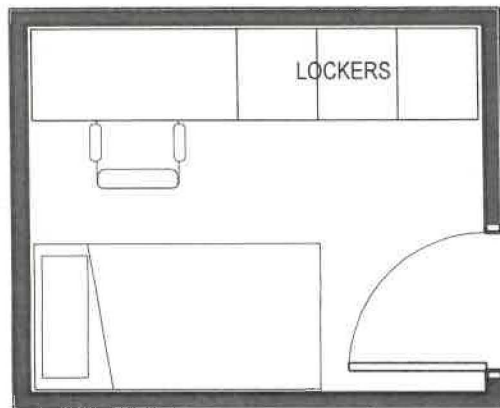
5.17 Crew Bunk Room

Spatial Needs Assessment
Portsmouth Police Department, Portsmouth, NH
ADG Project Number: 1094-23

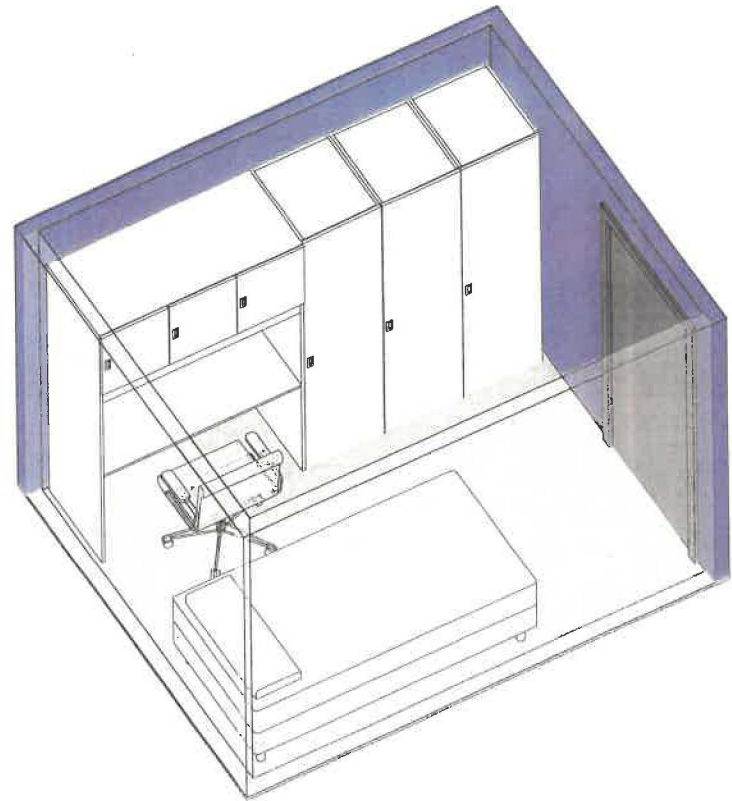
Area Standards:

Area:	80 S.F.
Dimensions:	Approximately 10'-0" x 8'-0"
Description:	Sleeping Quarters
Components:	Desk Task Chair Bed 3 Wardrobe Lockers
Comments:	

Plan View



Isometric View



Program / Interior Space Needs Analysis

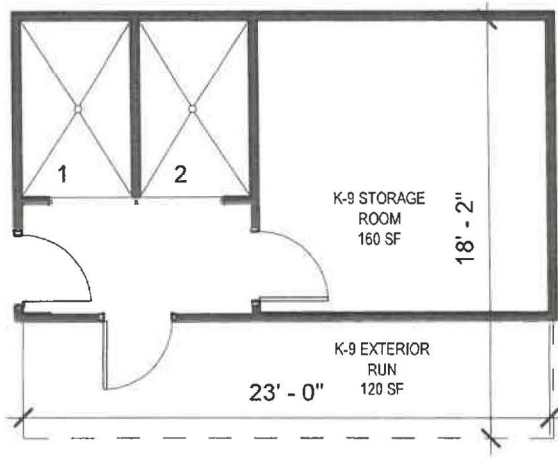
5.20 Dog Kennels / 5.21 Run / 5.22 K-9 Storage

Spatial Needs Assessment
Portsmouth Police Department, Portsmouth, NH
ADG Project Number: 1094-23

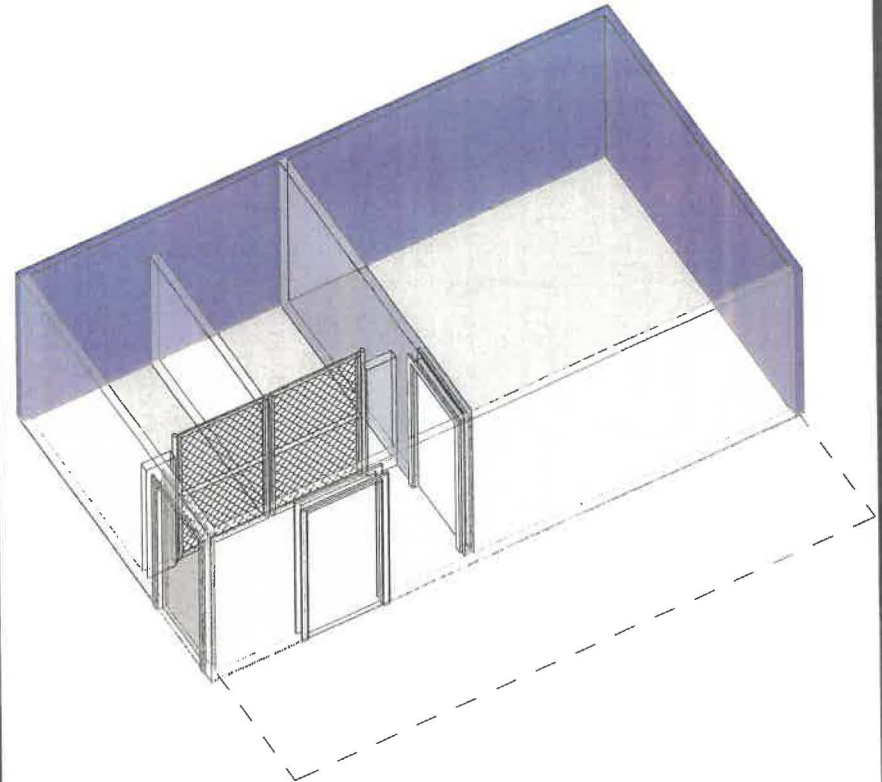
Area Standards:

Area:	420 S. F.
Dimensions:	Approximately 23'-0" x 18'-2"
Description:	Dog Kennels
Components:	Two Dog Kennels - 140 S.F. Partial-Height Walls 4'-10" x 7'-8" Chain Link Doors Floor Drains K-9 Storage - 160 S.F. Exterior Run - 120 S.F.
Comments:	

Plan View



Isometric View



Program / Interior Space Needs Analysis

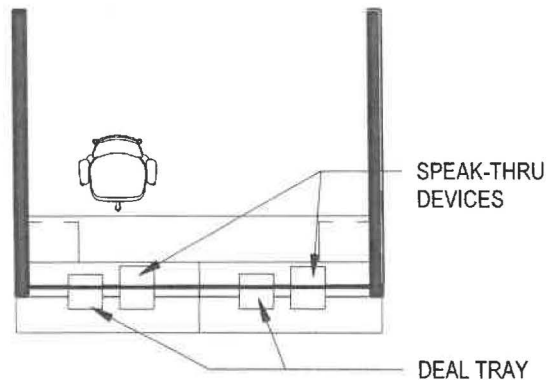
5.23 Station Officer

Spatial Needs Assessment
Portsmouth Police Department, Portsmouth, NH
ADG Project Number: 1094-23

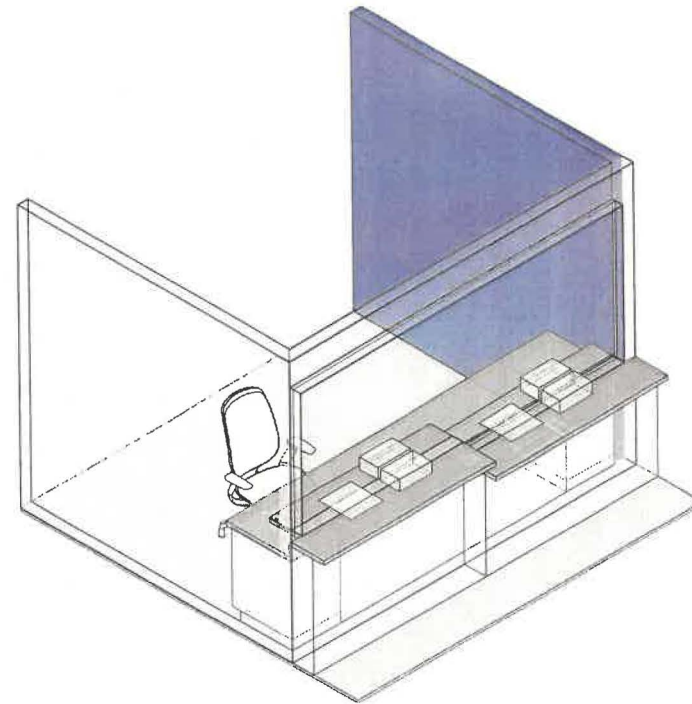
Area Standards:

Area:	80 S.F. - 100 S.F.
Dimensions:	Approximately 8'-0" x 10'-0"
Description:	Counter w/ Safety Barrier
Components:	ADA Transaction Counter @ 34" High Transaction Counter @ 39" High Work Counter @ 30" High Task Chair 2 Speak-Thru Devices 2 Deal Trays
Comments:	

Plan View



Isometric View



Program / Spatial Needs Assessment

6.1 Vehicle Sallyport

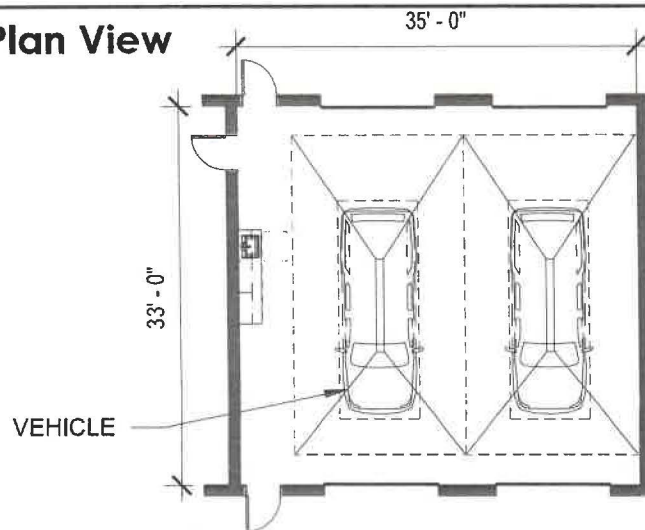
Spatial Needs Assessment
Portsmouth Police Department, Portsmouth, NH
ADG Project Number: 1094-23

Area Standards:

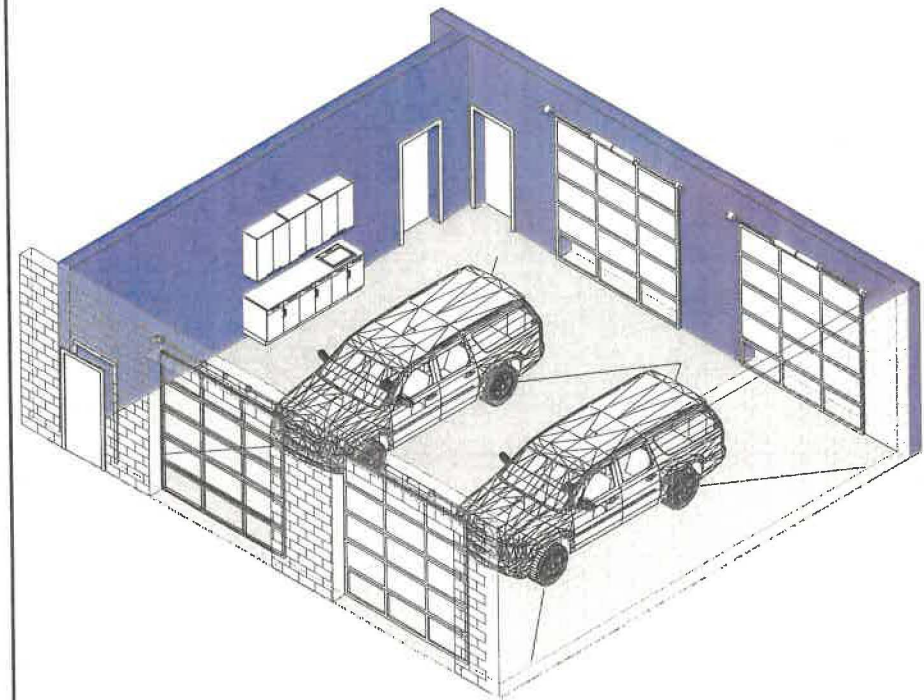
Area:	1,150 S.F. w/ Circulation
Dimensions:	2 spaces @ approx. 15'-0" x 26'-0"
Description:	Vehicle Sallyport
Components:	Stainless Steel Counter w/ Sink Trench Drain Coiling Doors

Comments:

Plan View



Isometric View



Program / Interior Space Needs Analysis

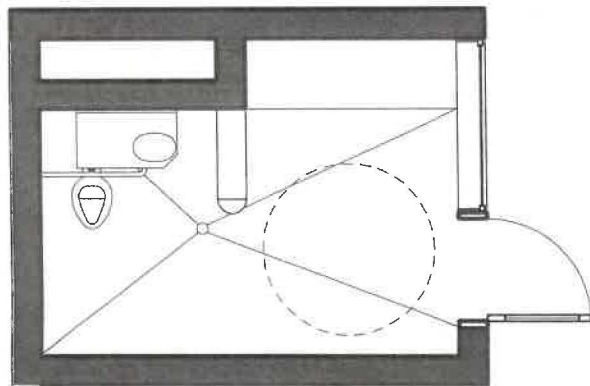
6.7 Male ADA Holding Cell

Spatial Needs Assessment
Portsmouth Police Department, Portsmouth, NH
ADG Project Number: 1094-23

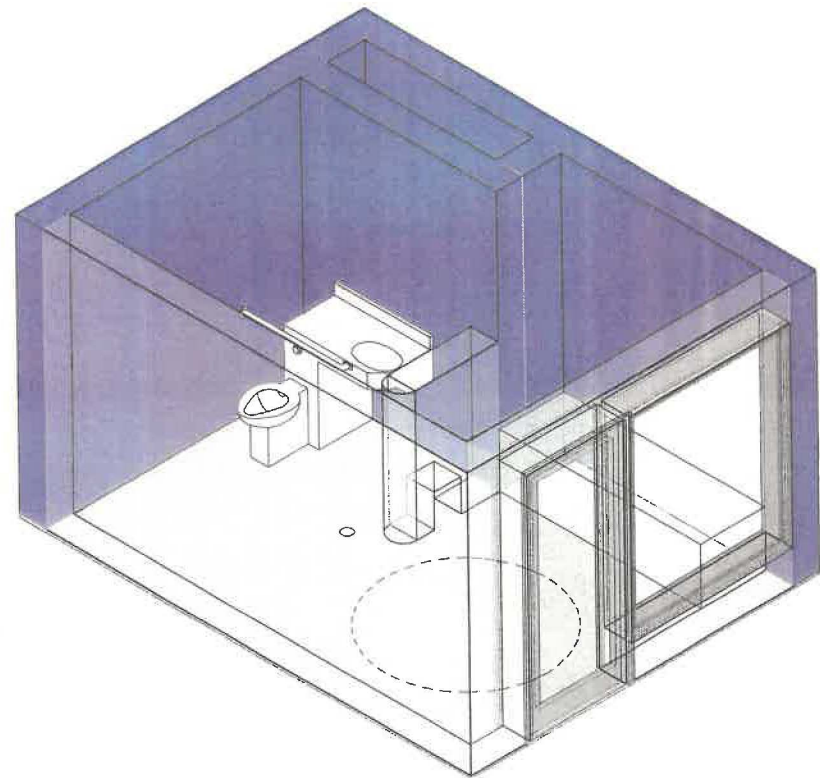
Area Standards:

Area:	100 S.F.
Dimensions:	Approximately 10'-0" x 10'-0"
Description:	ADA / Multiple Holding Cell
Components:	Stainless Steel Security Toilet/Sink Concrete Bench Privacy Wall w/ Cut-Out for Viewing Floor Drain Epoxy Quartz Flooring w/ integral base Security Door and Glazing
Comments:	Concrete Filled CMU Security Walls

Plan View



Isometric View



Program / Interior Space Needs Analysis

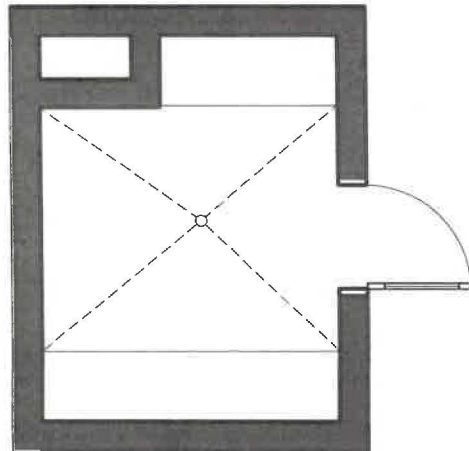
6.7 Holding Cell, Male, Padded

Spatial Needs Assessment
Portsmouth Police Department, Portsmouth, NH
ADG Project Number: 1094-23

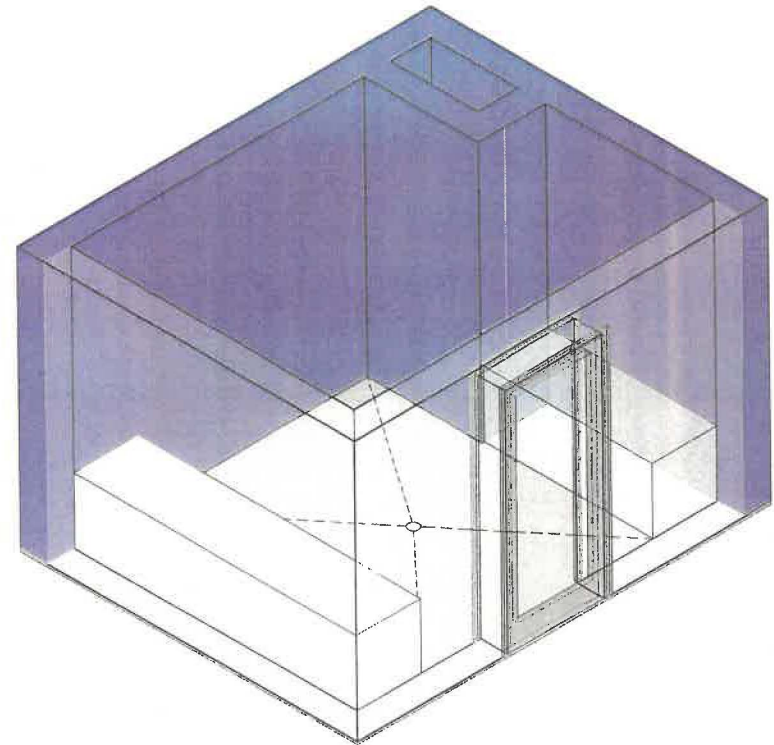
Area Standards:

Area:	80 S. F.
Dimensions:	Approximately 8'-0" x 10'-0"
Description:	Single Holding Cell, CMU Walls
Components:	Seamless Safety Padding on Wall, Floor, and Door 2 Concrete Benches Security Door Floor Drain
Comments:	

Plan View



Isometric View



Program / Interior Space Needs Analysis

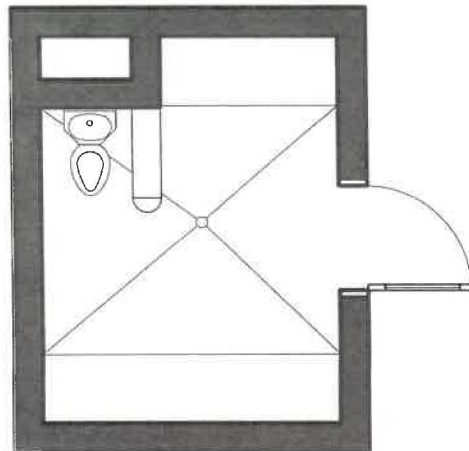
6.7 Holding Cell, Male, Single Occupancy

Spatial Needs Assessment
Portsmouth Police Department, Portsmouth, NH
ADG Project Number: 1094-23

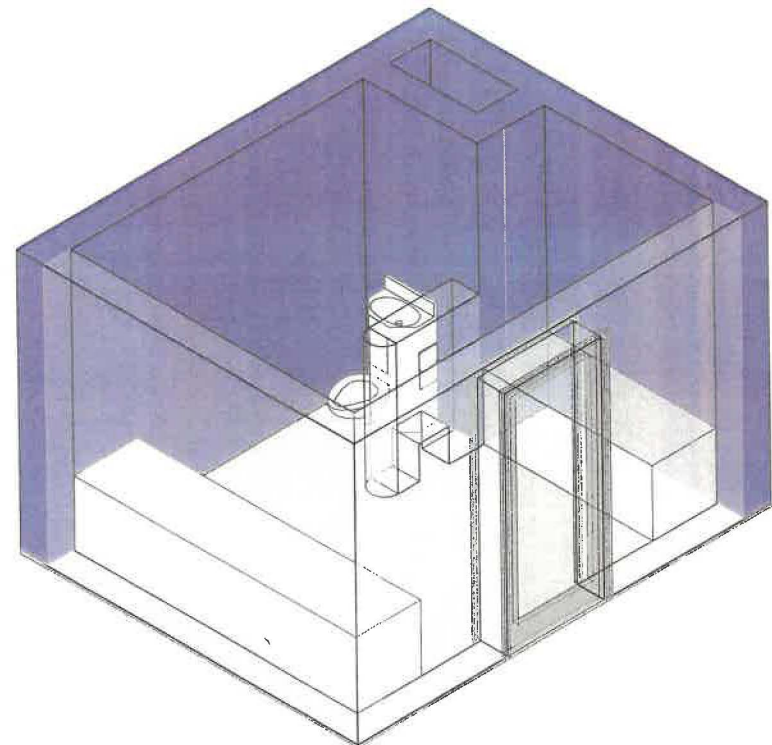
Area Standards:

Area:	80 S. F.
Dimensions:	Approximately 8'-0" x 10'-0"
Description:	Single Holding Cell, CMU Walls
Components:	Stainless Steel Security Toilet/Sink 2 Concrete Benches Floor Drain Epoxy Quartz Flooring Security Door
Comments:	CMU Walls

Plan View



Isometric View



Program / Interior Space Needs Analysis

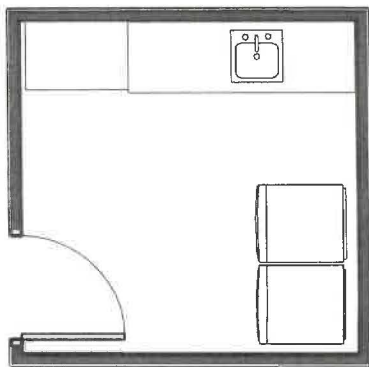
6.11 Laundry Facilities

Spatial Needs Assessment
Portsmouth Police Department, Portsmouth, NH
ADG Project Number: 1094-23

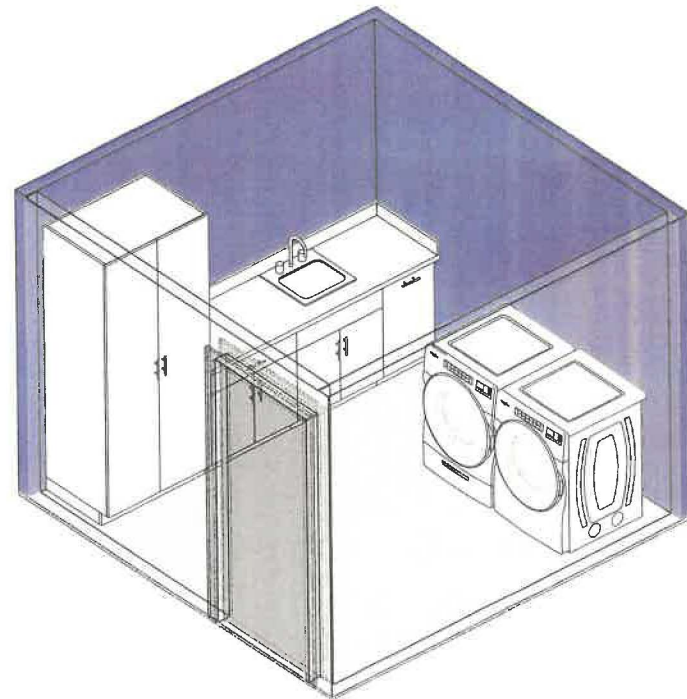
Area Standards:

Area:	100 S. F. - 120 S.F.
Dimensions:	Approximately 10'-0" x 10'-0"
Description:	Laundry Room
Components:	Washing Machine Drying Machine Counter with Sink Base Cabinets Full-height Storage Cabinet
Comments:	

Plan View



Isometric View



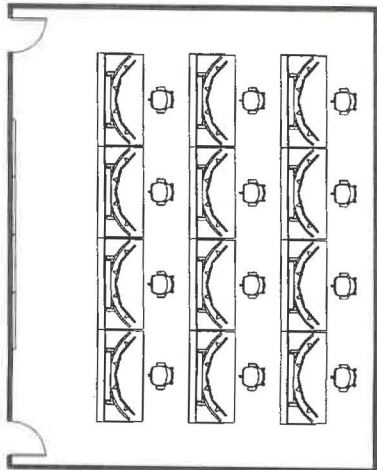
Program / Interior Space Needs Analysis

7.27 Real Time Crime Center

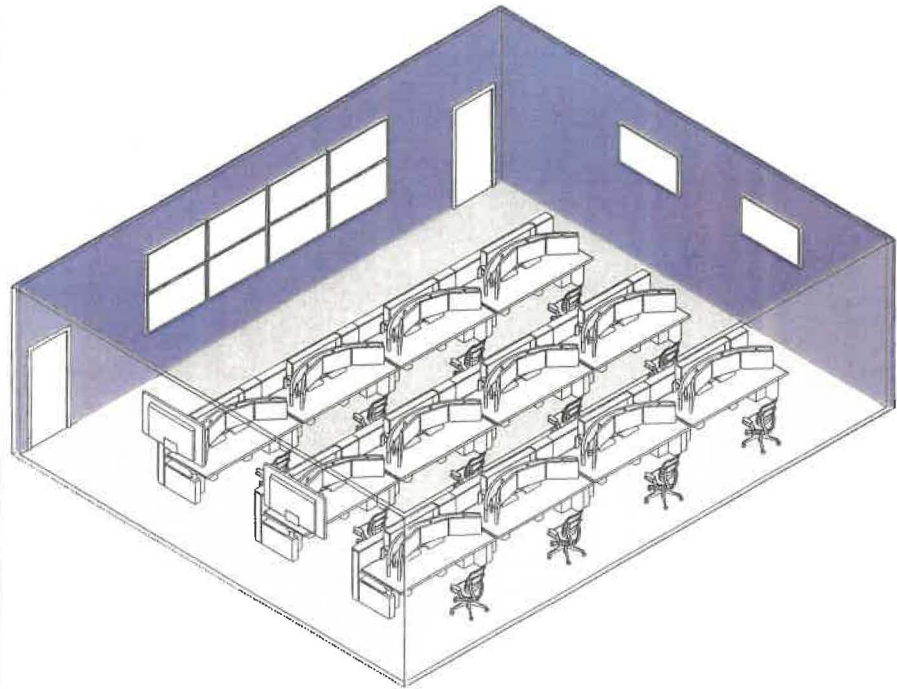
Spatial Needs Assessment
Portsmouth Police Department, Portsmouth, NH
ADG Project Number: 1094-23

Area Standards:	
Area:	1,200 S.F.
Dimensions:	Approximately 32'-0" x 40'-0"
Description:	Real Time Crime Center (RTCC)
Components:	(12) Stations 4-Monitor Emergency Consoles Task Chairs TV Monitor Wall
Comments:	

Plan View



Isometric View



Program / Interior Space Needs Analysis

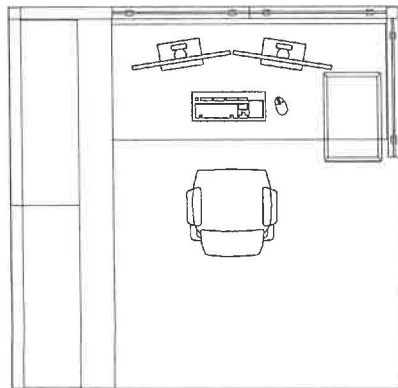
9.5 / 9.6 - 8'-0" x 8'-0" Work Station L-Shape

Spatial Needs Assessment
Portsmouth Police Department, Portsmouth, NH
ADG Project Number: 1094-23

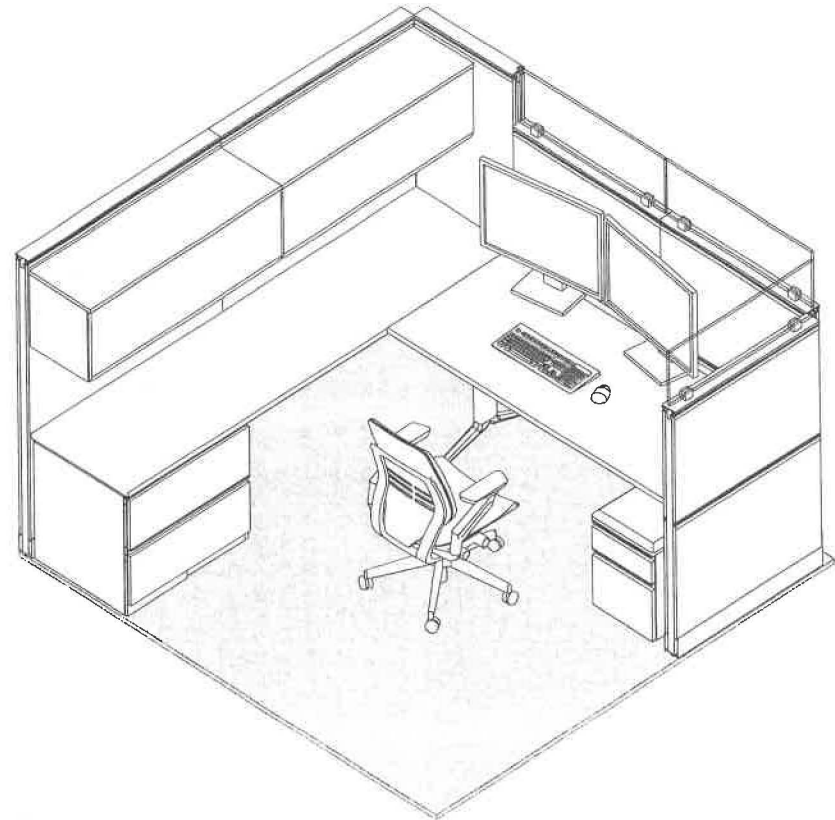
Area Standards:

Area:	64 S.F.
Dimensions:	8'-0" x 8'-0"
Description:	Open Area Work Station
Components:	Acoustical Panels 5-High Panels 4-High with Glass Adjustable Height Surface 30"D x 72"W Fixed Work Surface 24"D x 96"W Panel Mounted Storage Bins 48"W Lateral File 2-Drawer 30"W Mobile Box/File Drawers w/ Cushion
Comments:	

Plan View



Isometric View



Program / Interior Space Needs Analysis

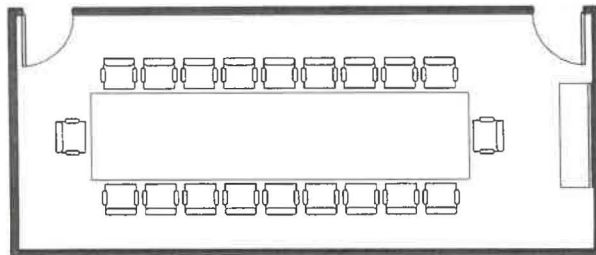
9.10 Conference Room

Spatial Needs Assessment
Portsmouth Police Department, Portsmouth, NH
ADG Project Number: 1094-23

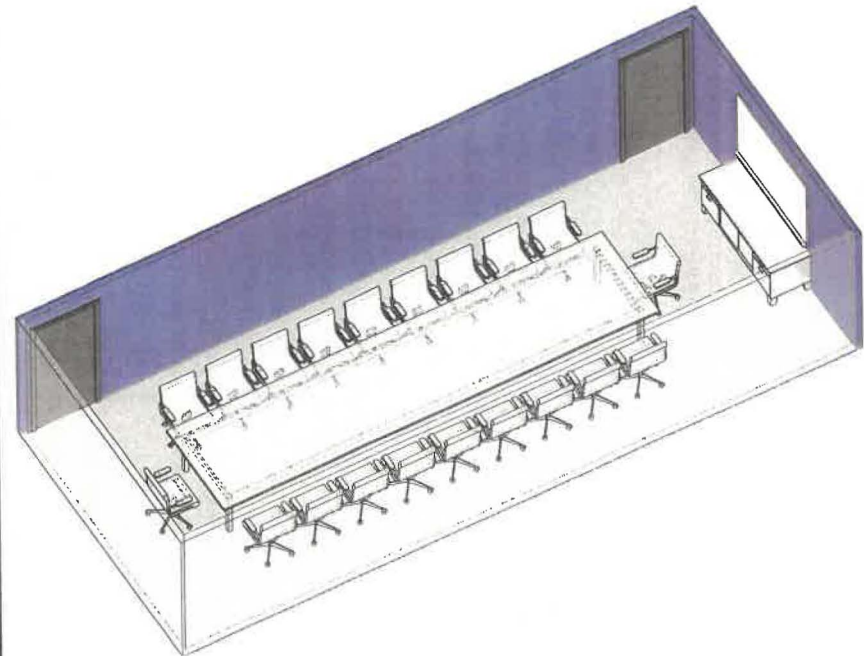
Area Standards:

Area:	500 S.F.
Dimensions:	Approximately 14'-0" x 34'-0"
Description:	Meeting Room
Components:	Conference Table @ 5'-0" x 22'-0" 20 Conference Chairs Credenza @ 2'-0" x 6'-0" Whiteboard / Media Board
Comments:	Acoustically-treated walls

Plan View



Isometric View



Program / Interior Space Needs Analysis

9.15 Mobile Crime Scene Bay /

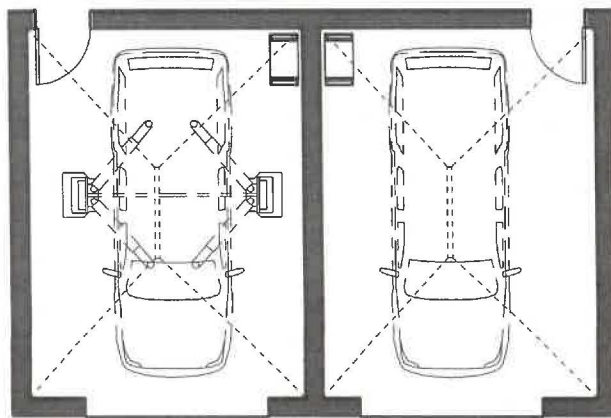
9.19 Vehicle Evidence Processing Bays

Spatial Needs Assessment
Portsmouth Police Department, Portsmouth, NH
ADG Project Number: 1094-23

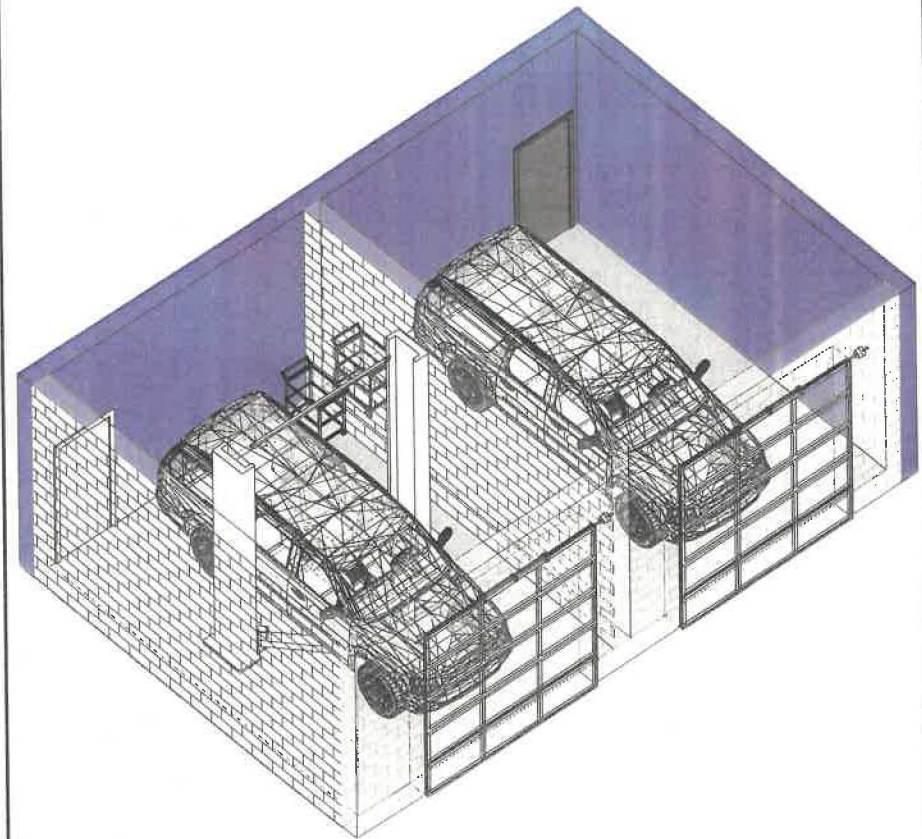
Area Standards:

Area:	560 S.F.
Dimensions:	Approximately 20'-0" x 30'-0"
Description:	Vehicle Evidence Processing & Mobile Crime Scene Bay(s)
Components:	Vehicle Lift Trench Drain Coiling Door Stainless Steel Mobile Cart
Comments:	

Plan View



Isometric View



Program / Interior Space Needs Analysis

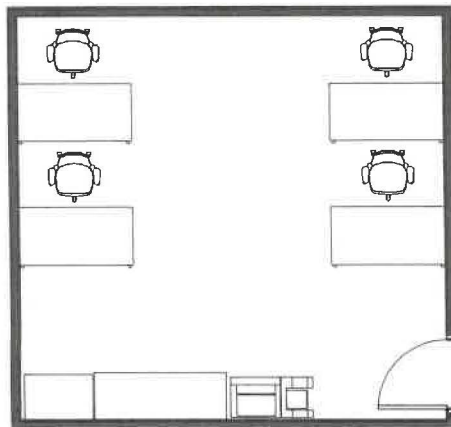
9.17 Digital Forensics Lab

Spatial Needs Assessment
Portsmouth Police Department, Portsmouth, NH
ADG Project Number: 1094-23

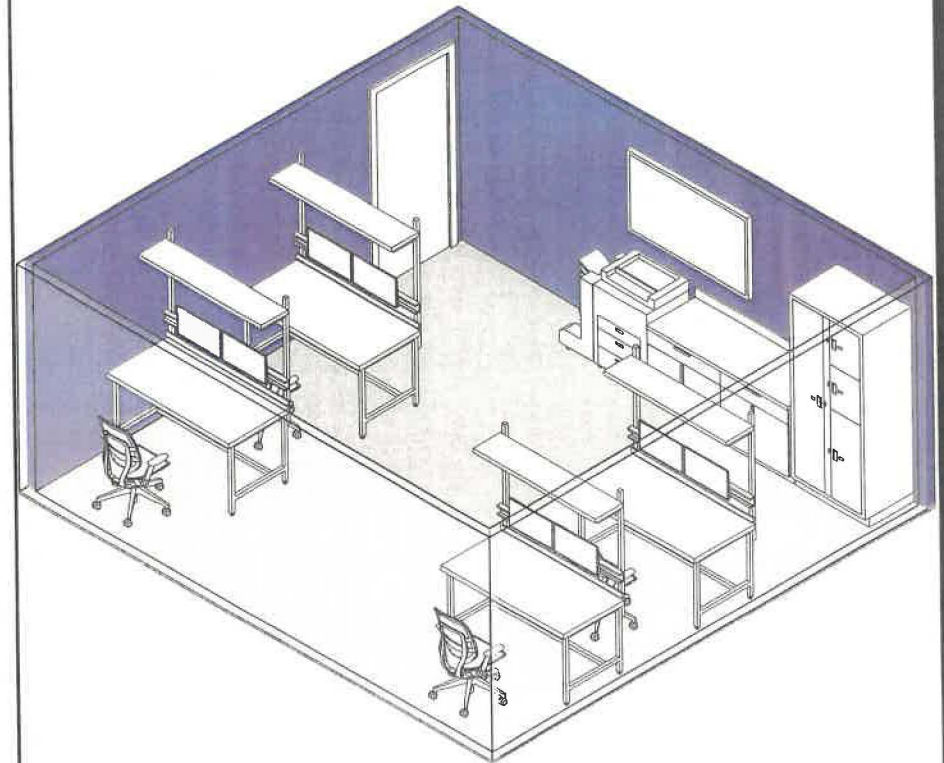
Area Standards:

Area:	300 S.F. - 350 S.F.
Dimensions:	Approximately 18'-0" x 19'-0"
Description:	Digital Forensics Lab
Components:	ESD Computer Workbench w/ Monitor(s) Task Chair(s) TV Monitor Evidence Lockers Counter w/ Base Cabinets Printer/Copier
Comments:	

Plan View



Isometric View



Program / Interior Space Needs Analysis

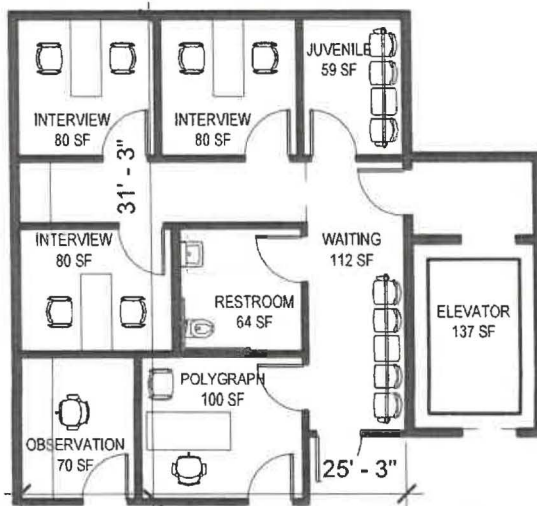
9.23 Interview Suite

Spatial Needs Assessment
Portsmouth Police Department, Portsmouth, NH
ADG Project Number: 1094-23

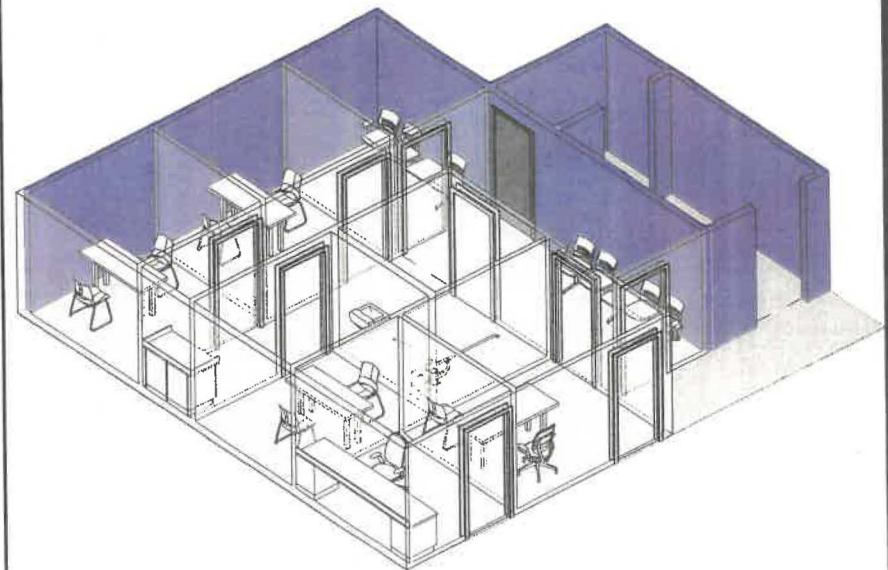
Area Standards:

Area:	760 S. F. / 3 Interview @ 80 S.F.
Dimensions:	Approximately 25'-3" x 31'-3"
Description:	Interview Rooms with Vestibule 50 S.F.
Components:	1 Table @ 30" x 66" Polygraph 3 Tables @ 24" x 60" Interview 2 Task Chairs 7 Sled-base Chairs 1 4-Seat & 1 3-Seat Tandem Chairs Counter & Cabinets 1 Accessible Restroom Double-Insulated Walls (Higher STC Rating)
Comments:	Elevator Access to Sallyport

Plan View



Isometric View



Program / Interior Space Needs Analysis

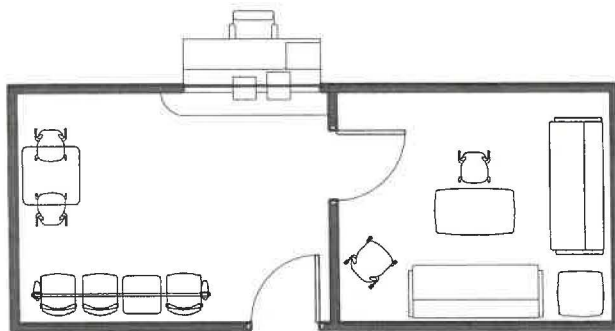
9.29 Family Waiting - Entry / 9.30 Soft Interview Room

Spatial Needs Assessment
Portsmouth Police Department, Portsmouth, NH
ADG Project Number: 1094-23

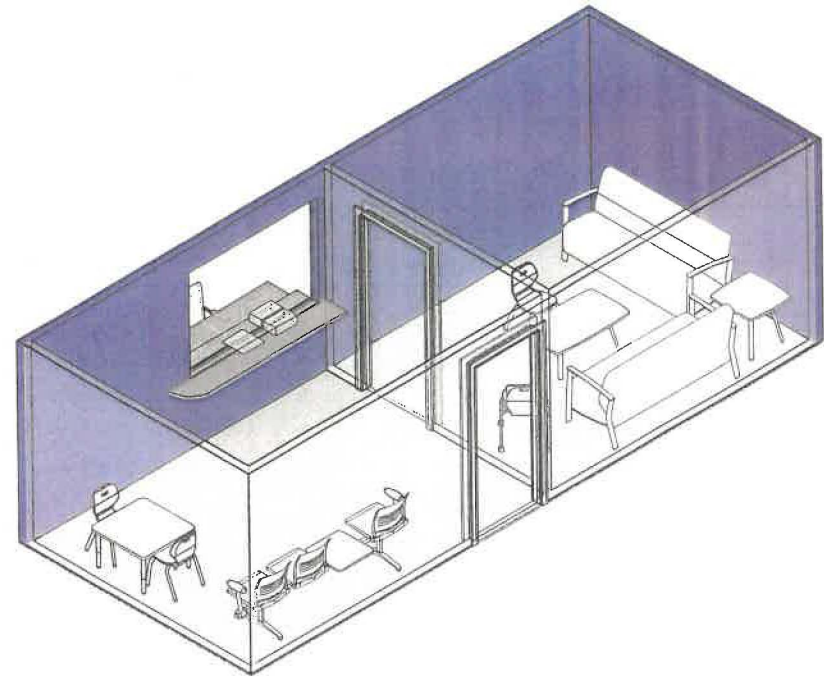
Area Standards:

Area:	260 S.F.
Dimensions:	Approximately 26'-0" x 10'-0"
Description:	Waiting 140 S.F. / Interview 120 S.F.
Components:	ADA Transaction Counter @ 34" High Desk-Height Work Counter 1 Speak-Thru Device, 1 Deal Tray 3 Tandem Seats, 1 Table Children's Table, 2 Chairs 2 Sofas @ 30" x 72" Coffee Table @ 24" x 42" End Table @ 24" x 24" 1 Adult Chair, 1 Child's Chair
Comments:	Double-Insulated Walls (Higher STC Rating)

Plan View



Isometric View



Program / Interior Space Needs Analysis

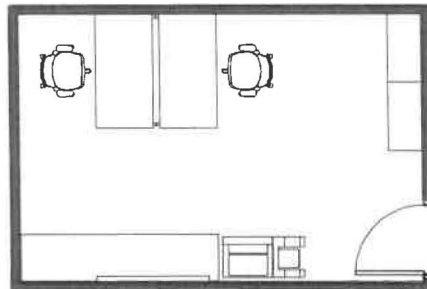
7.6 IT Lab / 10.4 Computer Forensic Workroom

Spatial Needs Assessment
Portsmouth Police Department, Portsmouth, NH
ADG Project Number: 1094-23

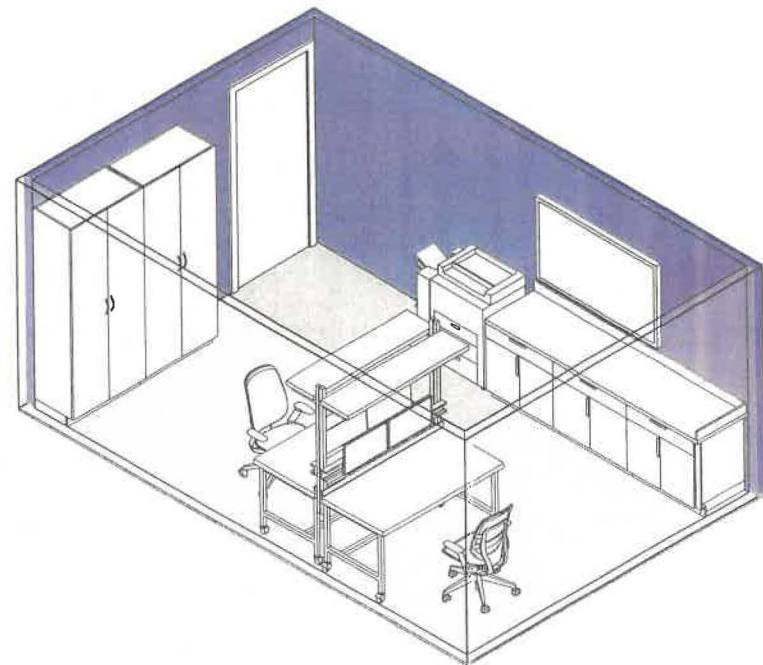
Area Standards:

Area:	150 S.F. - 200 S.F.
Dimensions:	Approximately 12'-0" x 18'-0"
Description:	Computer Forensic Workroom & IT Lab
Components:	ESD Computer Workbench w/ Monitor(s) Task Chair(s) TV Monitor Storage Cabinets Counter w/ Base Cabinets Printer/Copier
Comments:	

Plan View



Isometric View



Program / Interior Space Needs Analysis

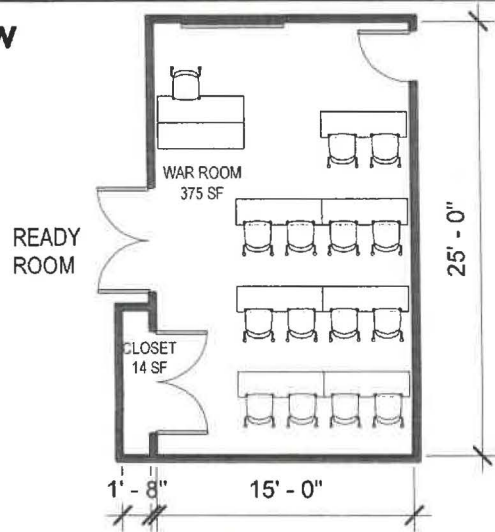
11.2 War Room

Spatial Needs Assessment
Portsmouth Police Department, Portsmouth, NH
ADG Project Number: 1094-23

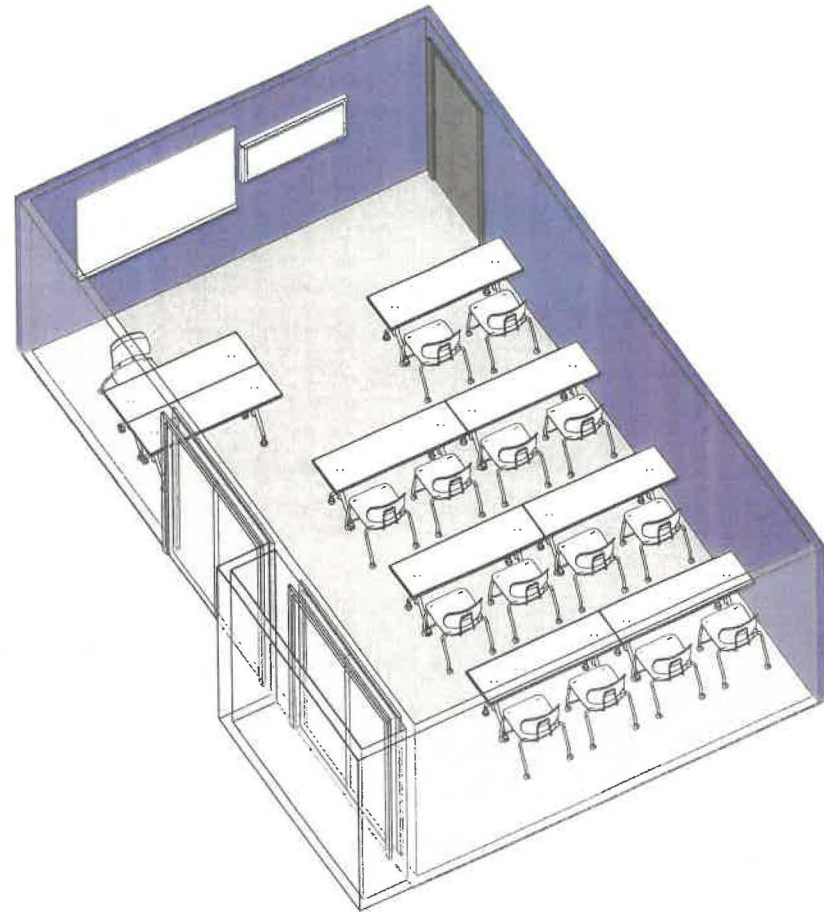
Area Standards:

Area:	375 S.F.
Dimensions:	Approximately 15'-0" x 25'-0"
Description:	Training/Meeting Room
Components:	9 Tables @ 18" x 60" 15 Stacking Chairs Whiteboard / Media Board Projection Screen 1 LCD Flat-Panel Monitor Storage Closet Double Doors to adjacent Ready Rm
Comments:	Acoustically-Treated Walls

Plan View



Isometric View



Program / Interior Space Needs Analysis

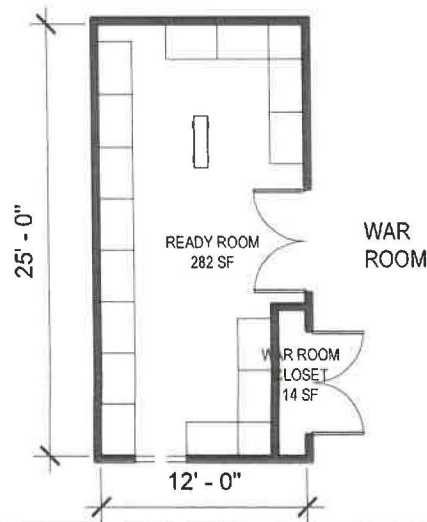
11.3 Tactical Ready Room

Spatial Needs Assessment
Portsmouth Police Department, Portsmouth, NH
ADG Project Number: 1094-23

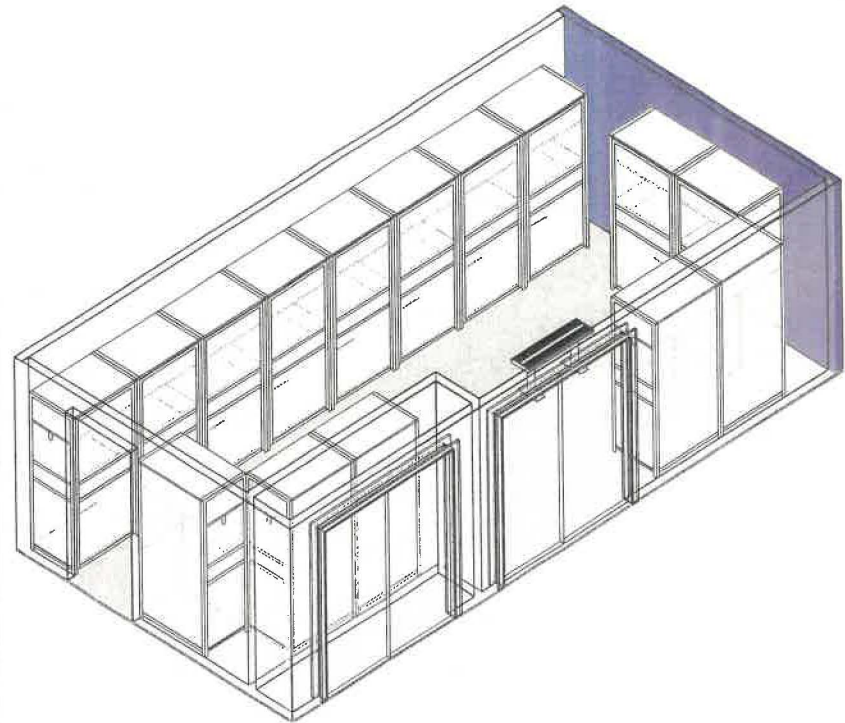
Area Standards:

Area:	315 S. F.
Dimensions:	Approximately 12'-0" x 25'-0"
Description:	Locker Room for 15
Components:	15 Tactical Lockers @ 36"W x 24"D x 78"H 1 Bench @ 12" x 36" Double Doors to adjacent War Room
Comments:	

Plan View



Isometric View



Program / Interior Space Needs Analysis

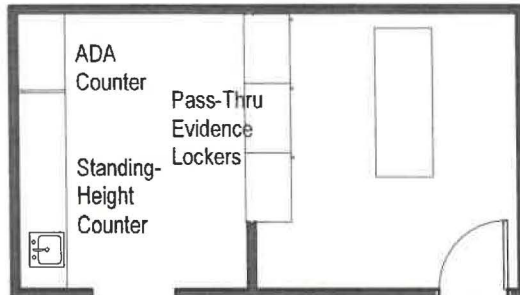
12.1 Evidence Drop / 12.2 Evidence Retrieval

Spatial Needs Assessment
Portsmouth Police Department, Portsmouth, NH
ADG Project Number: 1094-23

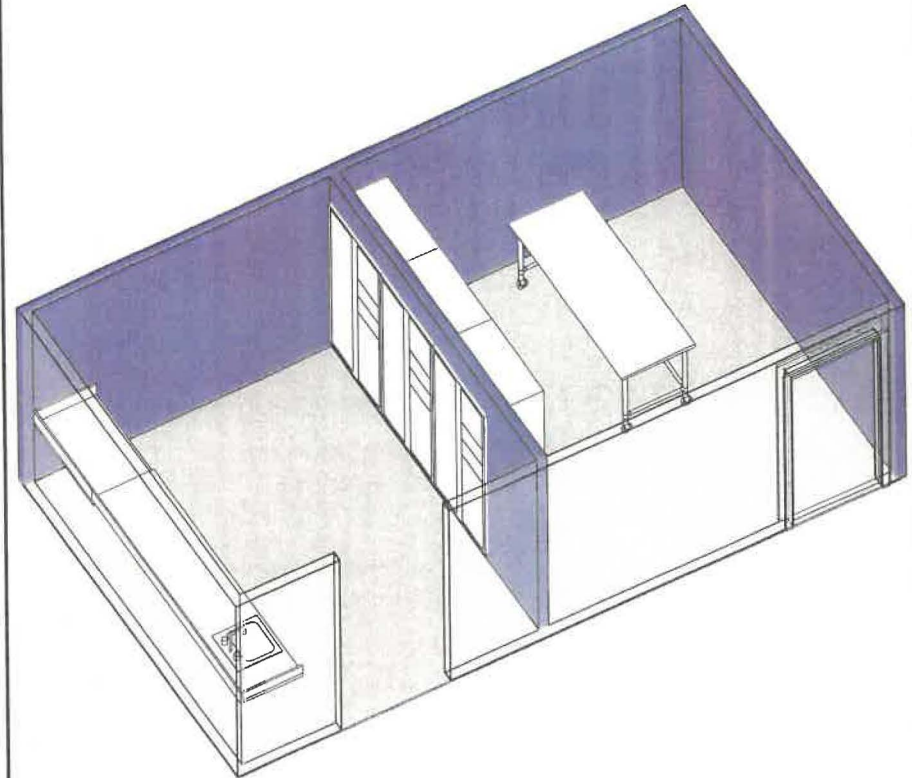
Area Standards:

Area:	120 S.F. / 140 S.F.
Dimensions:	Approximately 10' x 12' / 11'-6" x 12'
Description:	Evidence tagging and transfer
Components:	Built-In Standing-Height Counter Built-In ADA Counter Pass-Thru Keyless Evidence Lockers Sink Stainless Steel Work Table
Comments:	Adjacent to Evidence Processing

Plan View



Isometric View



Program / Interior Space Needs Analysis

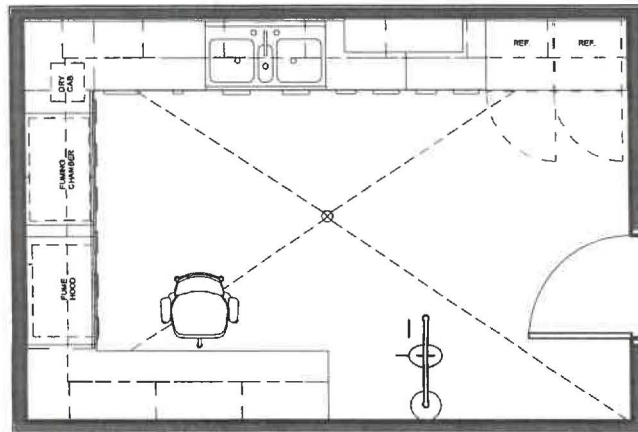
12.14 Crime Scene Laboratory w/ Decontamination

Spatial Needs Assessment
Portsmouth Police Department, Portsmouth, NH
ADG Project Number:1094-23

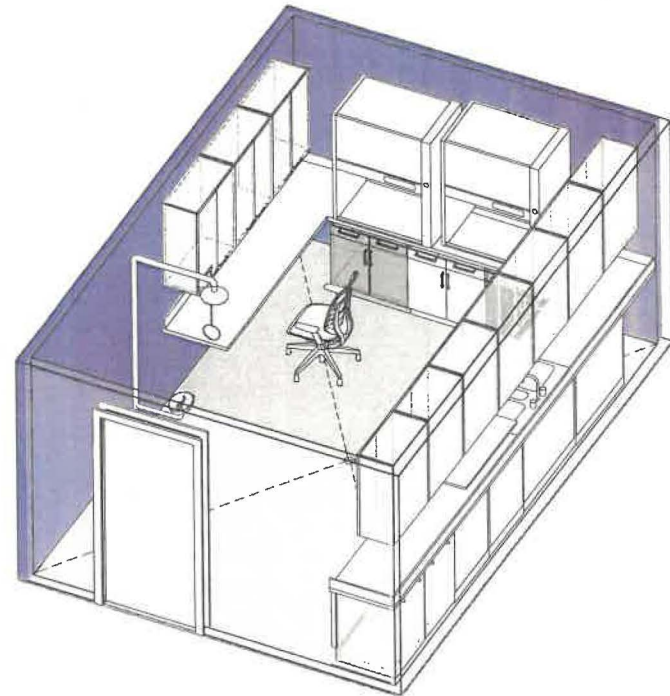
Area Standards:

Area:	220 S.F.
Dimensions:	Approximately 18'-0" x 12'-0"
Description:	Crime Scene Lab and Decontamination
Components:	Extra-Wide, Deep Sink with Utility Shelf 2 Under-Counter Refrigerators Low Counter w/ Fume Hood/Chamber Drying Cabinet Latent Print Testing/Microscope Upper Cabinet Storage Base Cabinet Storage
Equipment:	Fume Hood, Fuming Chamber, Drying Cabinet, Stainless Steel Cabinets

Plan View



Isometric View



Program / Interior Space Needs Analysis

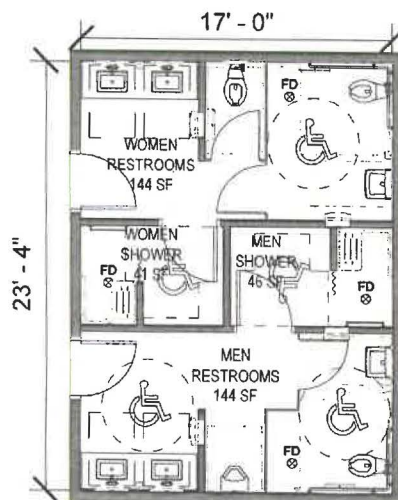
13.3 Employee Restroom with Showers

Spatial Needs Assessment
Portsmouth Police Department, Portsmouth, NH
ADG Project Number: 1094-23

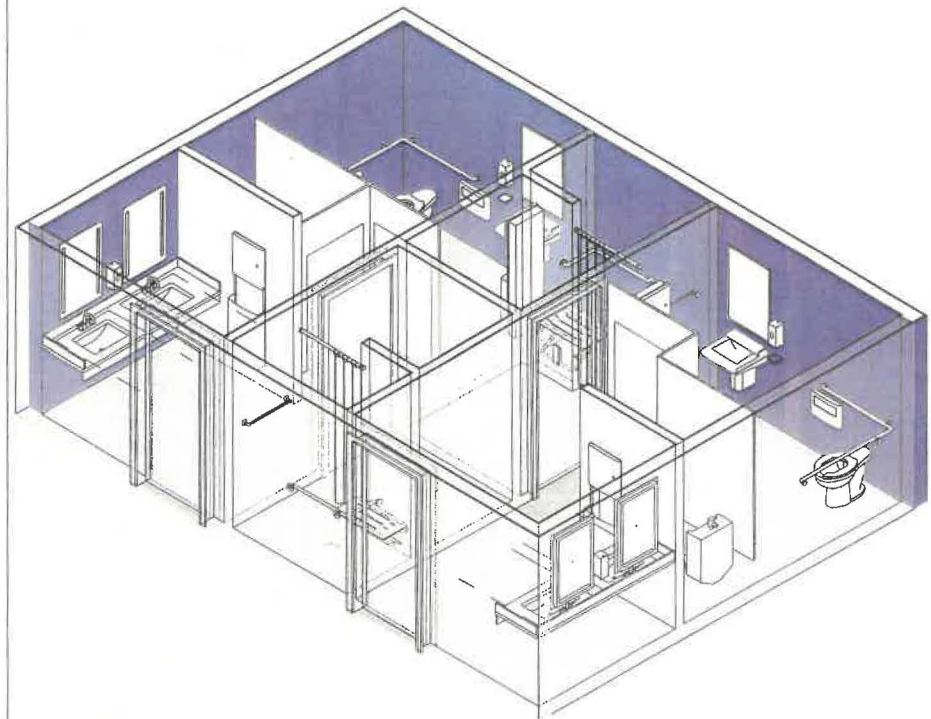
Area Standards:

Area:	400 S. F.
Dimensions:	Approximately 17'-0" x 23'-4"
Description:	Restrooms
Components:	Women's Restroom 2 Sinks 1 Stall / 1 Accessible Stall 1 Accessible Shower Room Men's Restroom 2 Sinks 1 Urinal / 1 Accessible Stall 1 Accessible Shower Room
Comments:	Tile Full-height on wet walls

Plan View



Isometric View



Program / Interior Space Needs Analysis

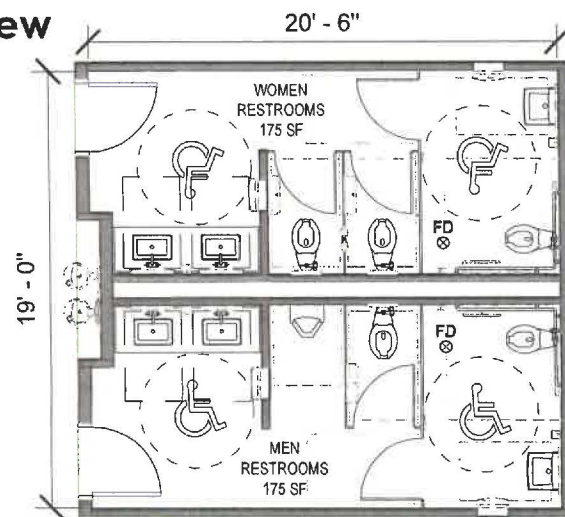
13.4 Employee Restrooms

Spatial Needs Assessment
Portsmouth Police Department, Portsmouth, NH
ADG Project Number: 1094-23

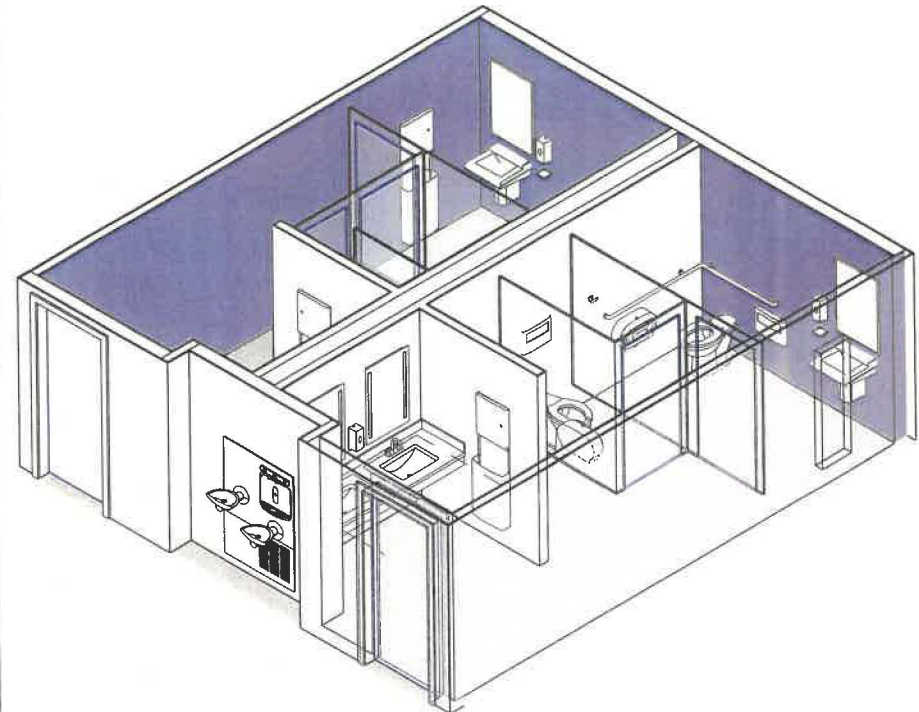
Area Standards:

Area:	400 S. F.
Dimensions:	Approximately 20'-6" x 19'-0"
Description:	Restrooms
Components:	Women's Restroom 2 Sinks 2 Stalls / 1 Accessible Stall Men's Restroom 2 Sinks 1 Urinal / 1 Stall / 1 Accessible Stall Drinking Fountain Bi-level
Comments:	Tile Full-height on wet walls

Plan View



Isometric View



Program / Interior Space Needs Analysis

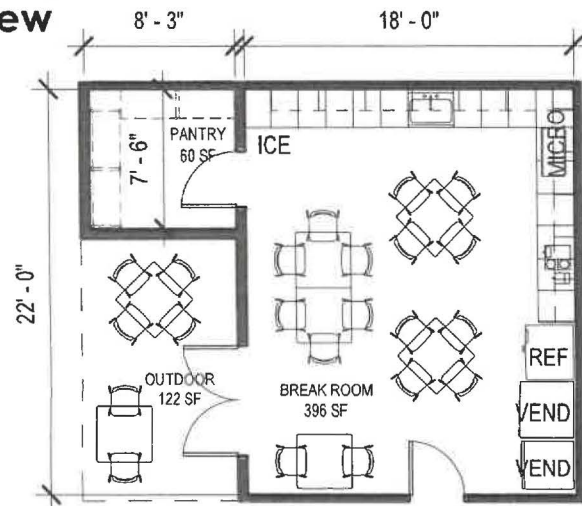
13.5 Break Area / 13.6 Pantry

Spatial Needs Assessment
Portsmouth Police Department, Portsmouth, NH
ADG Project Number: 1094-23

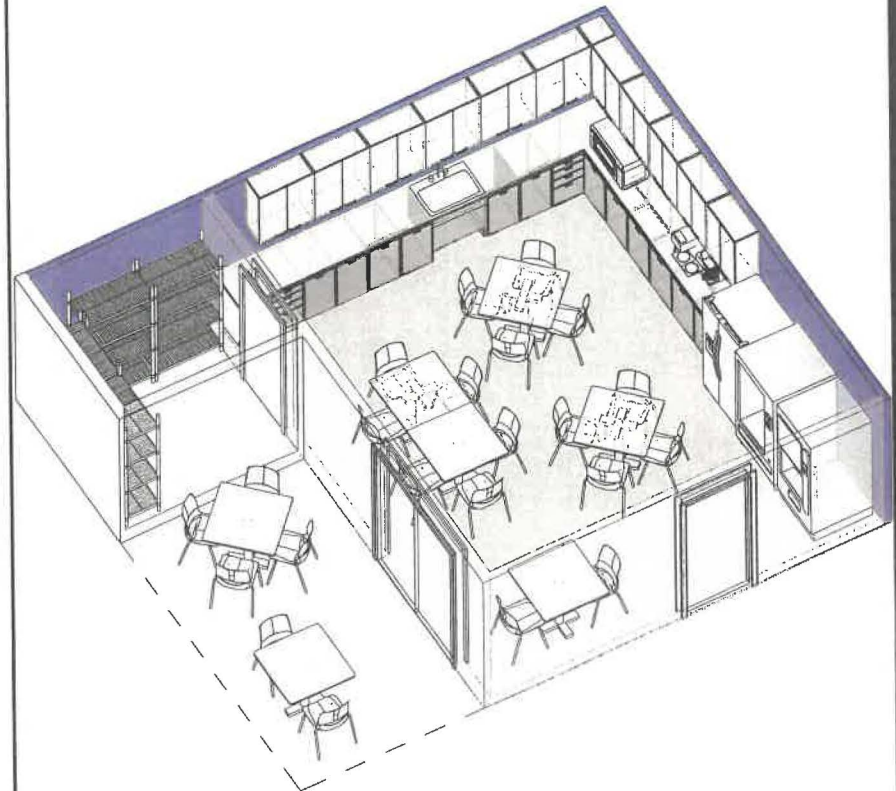
Area Standards:

Area:	400 S.F / 60 S.F Pantry
Dimensions:	18'-0" x 22'-0"
Description:	Break Area with Seating
Components:	7 Tables @ 36" x 36" 22 Chairs Refrigerator Microwave Coffee Maker / Coffee Pot Vending Machines Ice Maker 4 Wire Shelves 36"W
Comments:	Outdoor Seating Area 120 S.F.

Plan View



Isometric View



Program / Interior Space Needs Analysis

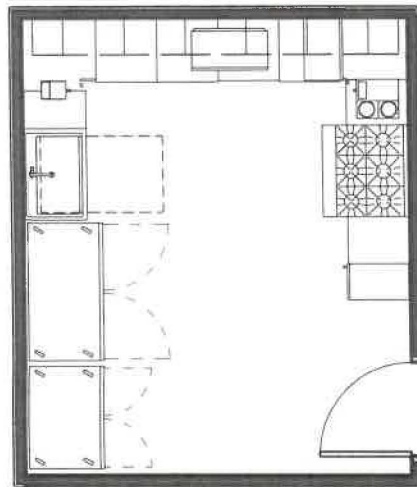
13.7 Full Service Kitchen

Spatial Needs Assessment
Portsmouth Police Department, Portsmouth, NH
ADG Project Number:1094-23

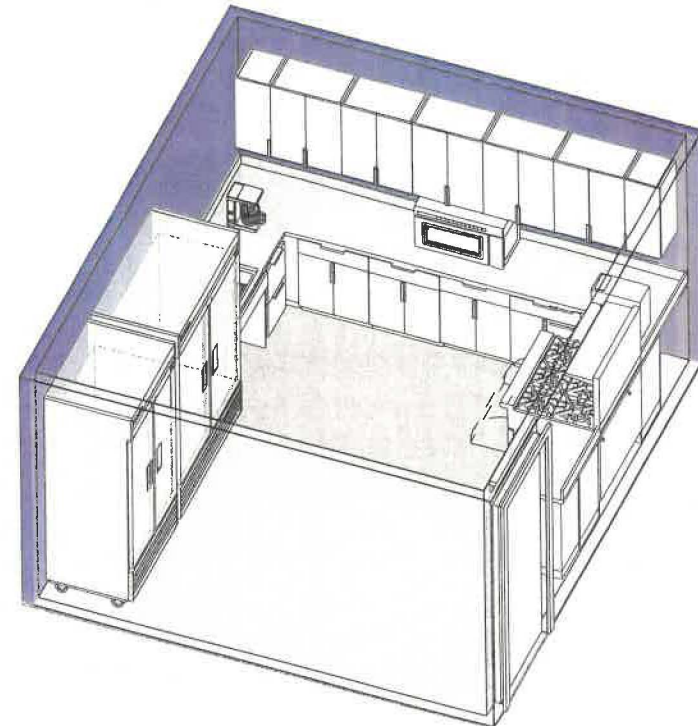
Area Standards:

Area:	180 S.F.
Dimensions:	Approximately 13'-0" x 15'-0"
Description:	Full Service Kitchen
Components:	Commercial Refrigerator Commercial Freezer 6-Burner Range/Oven Microwave Coffee Maker, Coffee Pot 2-Compartment Sink
Comments:	Stainless Steel Casework

Plan View



Isometric View



Program / Interior Space Needs Analysis

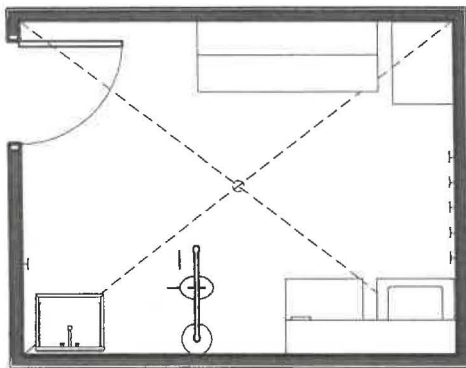
13.10 Laundry & Decontamination Room

Spatial Needs Assessment
Portsmouth Police Department, Portsmouth, NH
ADG Project Number:1094-23

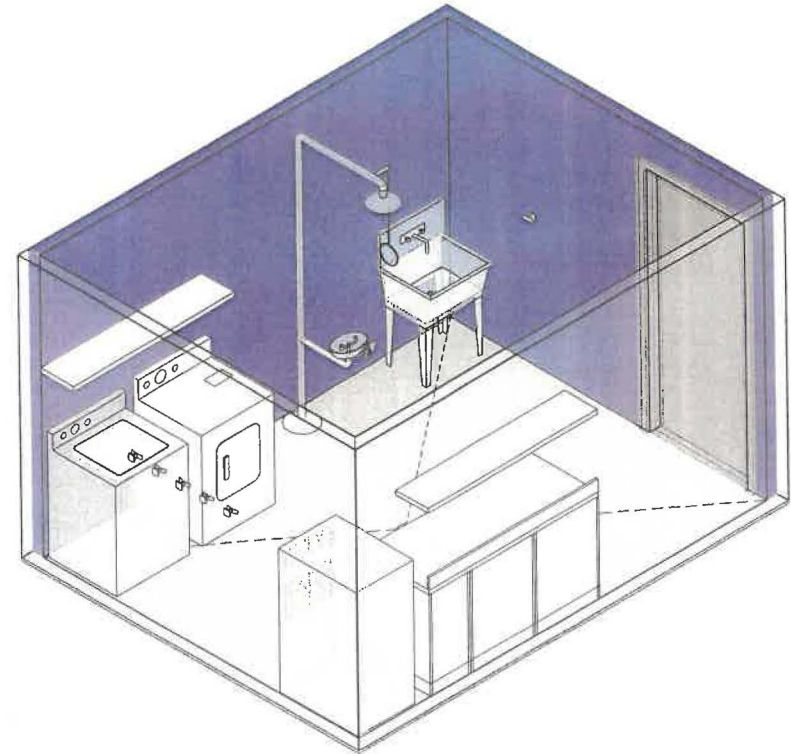
Area Standards:

Area:	120 S.F.
Dimensions:	Approximately 10'-0" x 13'-0"
Description:	Laundry & Decon Room
Components:	Options: Utility Sink Washer / Dryer Stainless Steel Counter and Shelving Extractor Utility Hooks Emergency Eyewash / Shower
Comments:	

Plan View



Isometric View



Program / Spatial Needs Assessment

15.1 Maintenance/Equipment Storage Bay

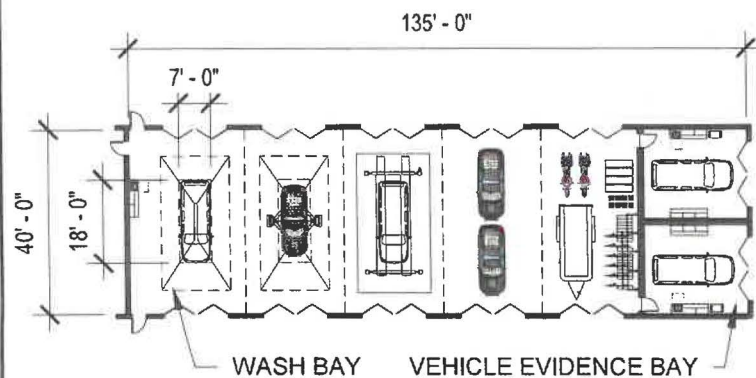
Spatial Needs Assessment
Portsmouth Police Department, Portsmouth, NH
ADG Project Number: 1094-23

Area Standards:

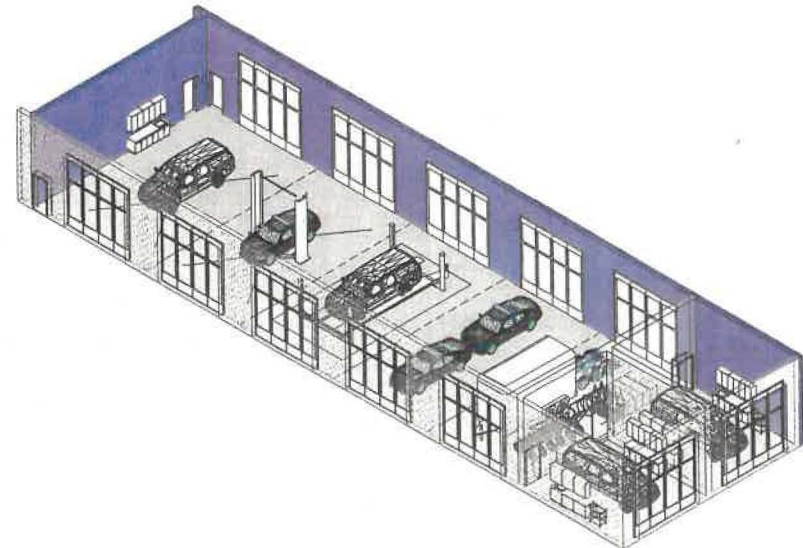
Area:	5,400 S.F. w/ Circulation
Dimensions:	Approx. 40'-0" x 135'-0"
Description:	Vehicle & Rolling Asset Storage Bay
Components:	Stainless Steel Counter(s) w/ Sink(s) Trench Drain(s) Bi-Fold Bay Doors Vehicle Lift Heavy Duty Vehicle Lift Stainless Steel Mobile Cart(s)

Comments:

Plan View



Isometric View



Program / Interior Space Needs Analysis

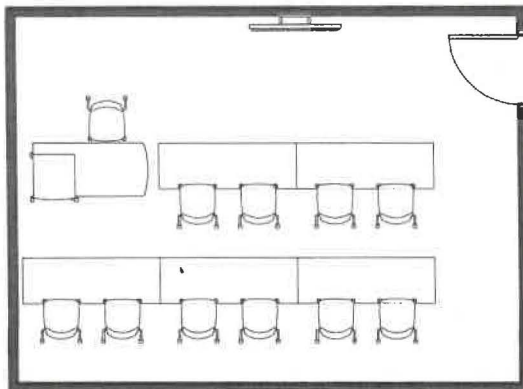
16.3 Firing Range Training Classroom

Spatial Needs Assessment
Portsmouth Police Department, Portsmouth, NH
ADG Project Number: 1094-23

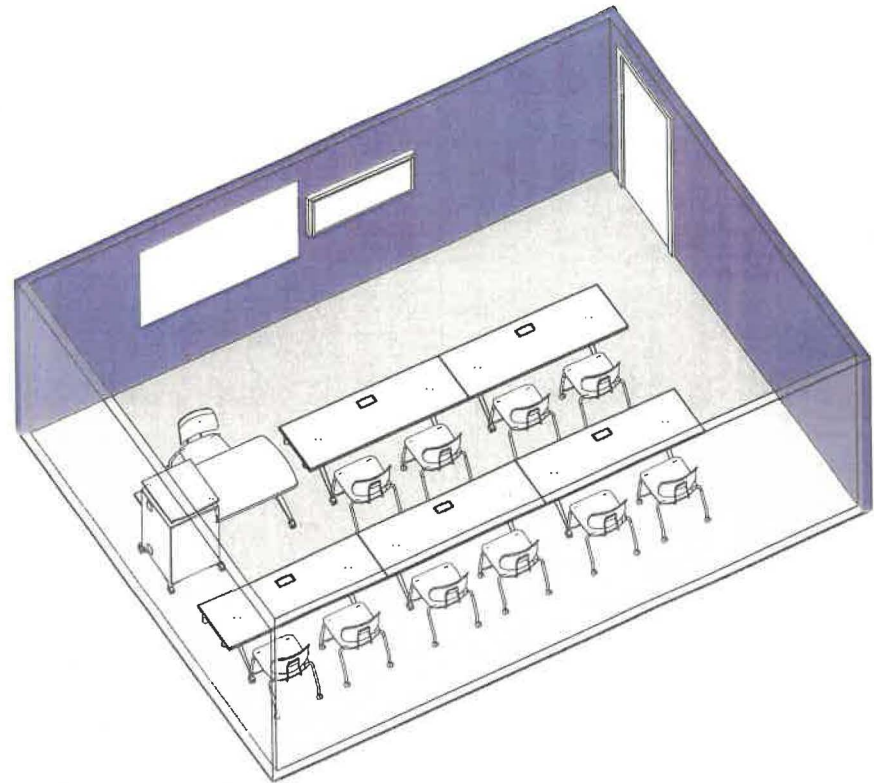
Area Standards:

Area:	350 S.F.
Dimensions:	Approximately 22'-0" x 16'-0"
Description:	Training Classroom
Components:	Tables - 5 @ 24" x 72", Powered 1 Instructor Table/Podium 11 Stacking Chairs 1 Monitor 1 Glass Markerboard Optional: Short-throw Projector
Comments:	Acoustically-treated walls and ceiling

Plan View



Isometric View



Program / Interior Space Needs Analysis

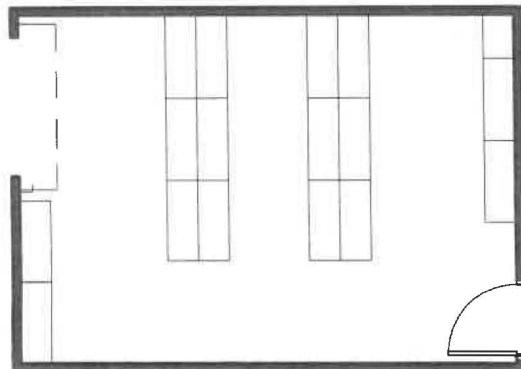
16.7 Armory / Ammunitions Storage

Spatial Needs Assessment
Portsmouth Police Department, Portsmouth, NH
ADG Project Number: 1094-23

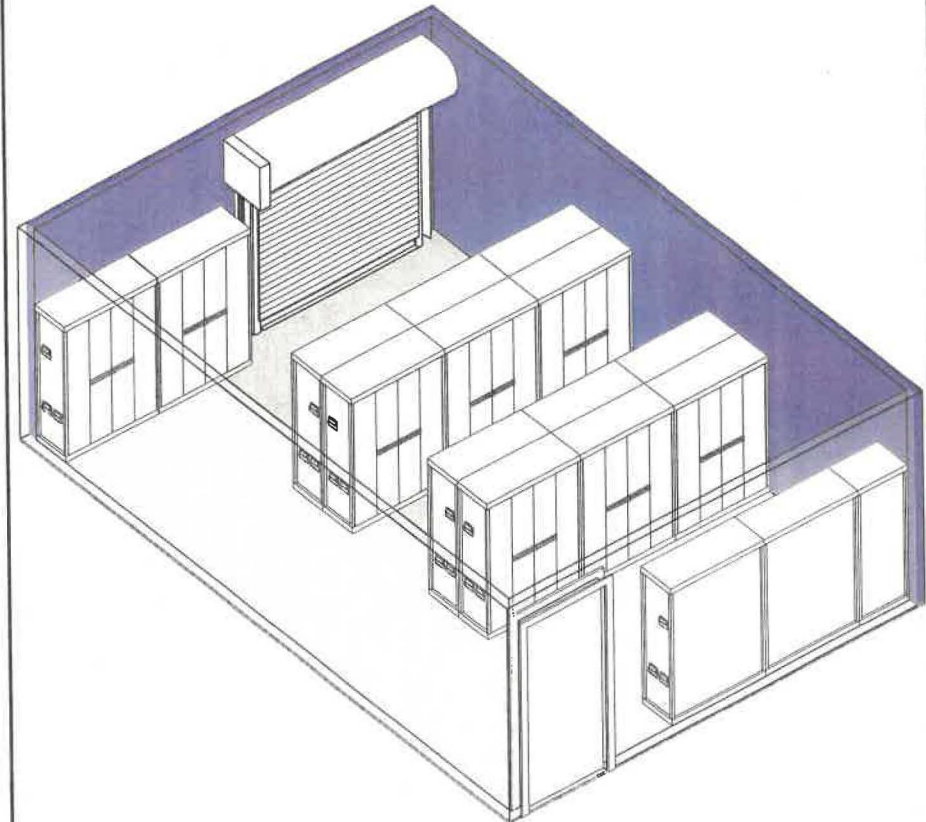
Area Standards:

Area:	320 S.F. - 360 S.F.
Dimensions:	Approximately 15'-0" x 22'-0"
Description:	Armory & Ammunitions Storage
Components:	Coiling Door for Palette Receiving 42"W x 16"D x 60"H Gun Storage Shelves 22"W x 16"D x 60"H Gun Storage Shelves 42"W x 16"D x 60"H Misc Storage Shelves
Comments:	

Plan View



Isometric View



Program / Interior Space Needs Analysis

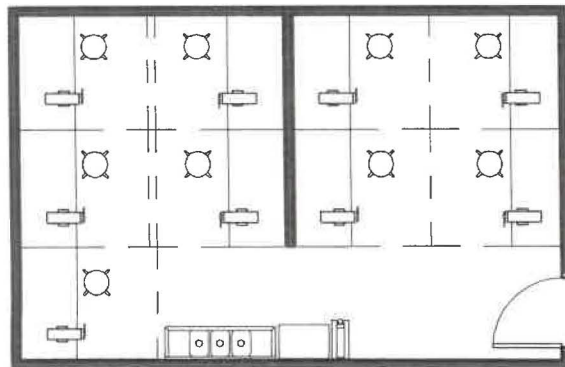
16.9 Weapons Cleaning Room

Spatial Needs Assessment
Portsmouth Police Department, Portsmouth, NH
ADG Project Number: 1094-23

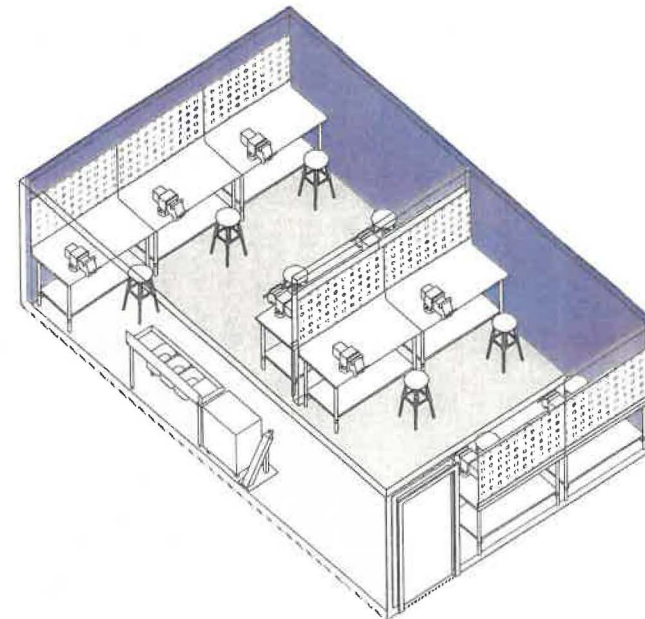
Area Standards:

Area:	360 S.F. - 400 S.F.
Dimensions:	Approximately 15'-0" x 24'-0"
Description:	Weapons Cleaning Room
Components:	9 Stations @ 30 S.F. each Bench Vises Peg Boards 3-Compartment Sink Gun Clearing Station Tool Chest
Comments:	

Plan View



Isometric View



Program / Interior Space Needs Analysis

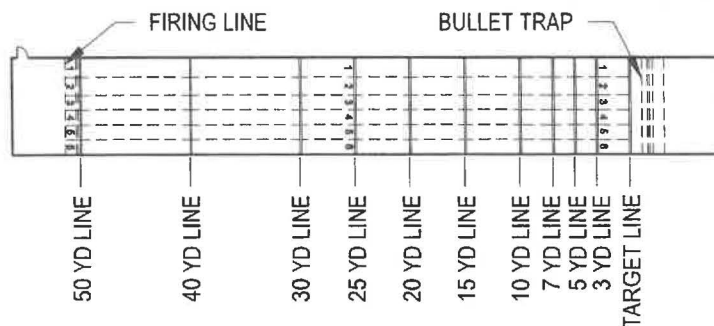
16.11 6-Lane 50 yd Firing Range / 16.12 Firing Line /
16.13 Trap

Spatial Needs Assessment
Portsmouth Police Department, Portsmouth, NH
ADG Project Number: 1094-23

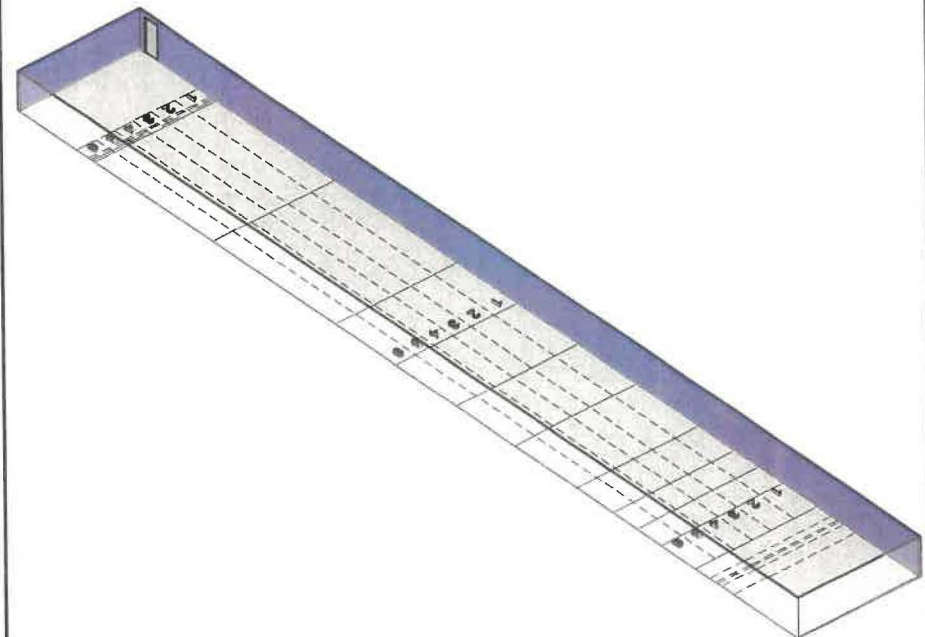
Area Standards:

Area:	4,200 S.F. - 4,600 S.F.
Dimensions:	Approximately 26'-0" x 193'-0"
Description:	6-Lane Firing Range
Components:	50 yd, 6-lane range (4) 4'-0" Wide Lanes (2) 5'-0" Wide Lanes ~ 470 S.F. Firing Line ~ 650 S.F. Bullet Trap
Comments:	

Plan View



Isometric View



Program / Interior Space Needs Analysis

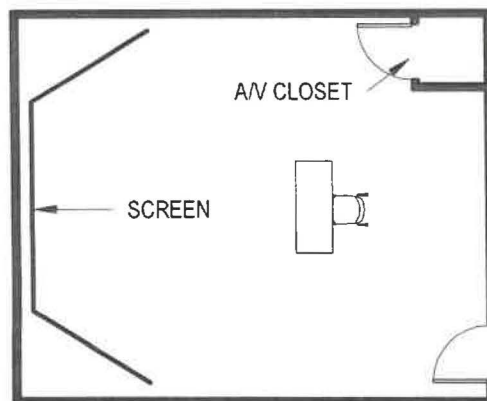
16.14 Simunitions

Spatial Needs Assessment
Portsmouth Police Department, Portsmouth, NH
ADG Project Number: 1094-23

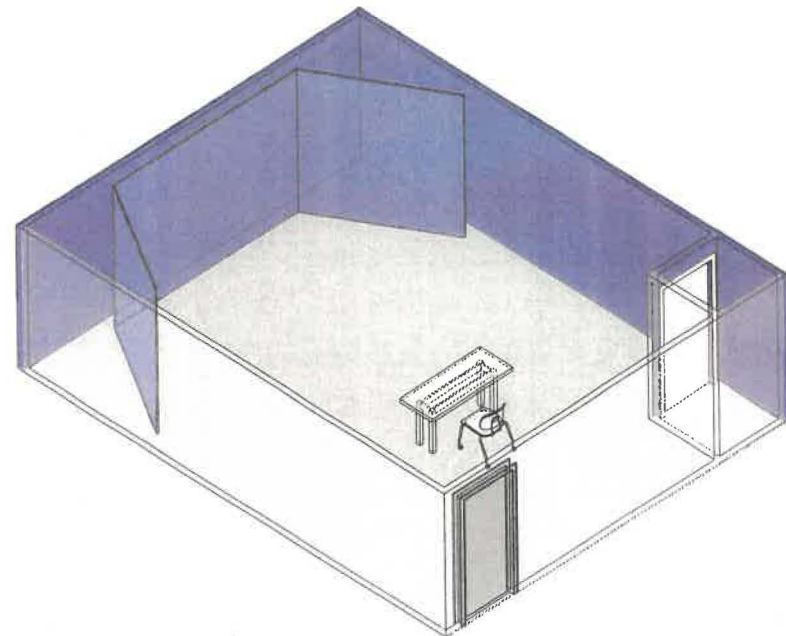
Area Standards:

Area:	480 S.F.
Dimensions:	Approximately 21'-0" x 25'-0"
Description:	Training Room
Components:	Table @ 24" x 60" Chair A/V Closet Screen
Comments:	

Plan View



Isometric View



Index – Interior Space Needs 3D Diagrams – Portsmouth Police Department, NH

- 1.0 PUBLIC ACCESS
 - A. 3. Medium Interview/Meeting Room – 140 sf
 - 4. Victim / Witness Interview rooms with Entry Vestibule – 180 sf
 - 7. PIO/Training Coordinator Office – 140 sf
 - 8. Training / Public Accessible Meeting Room – 2500sf
 - 9. Catering Prep Room – 200 sf
 - 13. Break Room / Vending Area – 200 sf
 - 14. Front Desk (Office) – 120 sf
- 2.0 ADMINISTRATION: OFFICE OF THE CHIEF
 - A. 1. Reception/Waiting – 80 sf
 - 2. Admin Assistant with Files (Future) – Combined with 2.1
 - 3. Executive Assistant with Files – 120 sf
 - 4. Command Staff Conference Room – 600 sf
 - 5. Chief of Police – 240 sf
 - 6. Restroom w/ Shower – 120 sf – Combined with 2.5
 - 7. Deputy Chief's Office – 200 sf
 - 8. Reference Library / Flex Use Space – 140 sf
 - 9. Small Break Room – 140 sf
 - 11. Copy / Work Room – 120 sf
 - B. 14. Business Manager's Office – 180 sf
 - 15. Business Assistant's Office w/ Files – 160 sf – Same Diagram as 1.7
 - 16. Accounting Clerk w/ Files – 160 sf – Same Diagram as 1.7
 - C. 21. Lieutenant's Office w/ Files – 160 sf – Same Diagram as 2.14
 - 22. Accreditation Manager's Office w/ Files – 160 sf – Same Diagram as 1.7
- 3.0 ADMINISTRATION: PERSONNEL & TRAINING
 - A. 3. Training Officer / Range Master Office – 140 sf – Same Diagram as 1.7
 - 4. Lieutenant's Office – 160 sf – Same Diagram as 2.14
 - 7. Break Alcove – 40 sf
 - 8. Small Conference Room – 200 sf
 - 9. Physical Agility (Gym) – 1000sf
 - 10. Defensive Tactics Lab – 600 sf
 - 14. Quartermaster Storage – 800 sf
 - 15. Receiving Area – 120 sf – Combined with 3.14
- 4.0 RECORDS & COURTS
 - A. 2. Copy / Work room – 140 sf – Same Diagram as 2.11
 - 3. Record's Office Manager's Office – 140 sf – Same Diagram as 1.7
 - 6. (2) Prosecutor's Office w/ Meeting Space – 160 sf each
 - 9. Records / File Storage – 120 sf
 - 10. Secured Archived File Storage – 200 sf
- 5.0 PATROL
 - A. 4. Report Writing w/ Storage – 180 sf
 - 5. Mail Room / Central Business Hub – 140 sf
 - 6. Roll Call Room – 400 sf
 - 7. Sergeant's Office – 288 sf
 - 8. Shift Commander's Office – 160 sf – Same Diagram as 2.14
 - 10. Captain's office – 108 sf – Same Diagram as 2.14
 - 17. (2) Bunk Rooms – 80 sf each
 - 20. (2) K-9 Kennels w/ Entry – 140 sf
 - 21. K-9 Exterior Communal Run – 120 sf – Combined with 5.20
 - 22. K-9 Storage Room – 160 sf – Combined with 5.20
 - 23. Station Officer (Front Desk) – 80 sf
- 6.0 BOOKING & INTAKE
 - A. 1. Vehicle Sallyport (2 Vehicles) – 1150 sf
 - 7. Holding Cells:
 - a. Male, Padded Cell – 80 sf
 - b. Male, Single Occupancy – 80 sf