

# Project Start-Up Information

## Islington Street Corridor Improvements – Phases 2a and 2b



March 19, 2024

Purpose of tonight's meeting is to review:

- Project Team
- Limits and Scope of Work
- Anticipated Start-up and Work Progression Schedule
- Traffic Patterns during different phases
- Distribution of Public Information
- Questions

# Project Team

City of Portsmouth DPW

Underwood Engineers, Inc.

Severino Trucking Co. Inc.

# City of Portsmouth DPW

- Erich Fiedler– City Engineer
- David Desfosses – Project Manager
  - Primary Project Contact
  - Cell Phone (603)-498-4747
  - Sean Clancy – Economic Development
  - Monte Bohanan – Director of Communications

# Underwood Engineers, Inc. Contacts

- Matt Hall– Project Manager
- Brad Chareth – Resident Project Representative,  
Primary Contact
  - Cell Phone (603)-793-7860

# Severino Trucking Co. Inc. Contacts

- Mark Rainey – Project Manager
- Roger Rivet – Project Superintendent
  - Primary Contact
  - Cell Phone: (603)-234-0919



# Circa 1895 – 6 Generations Ago..



# Last Utility Update was in 1893 (131 years ago) for the Advent of Modern Internal Plumbing





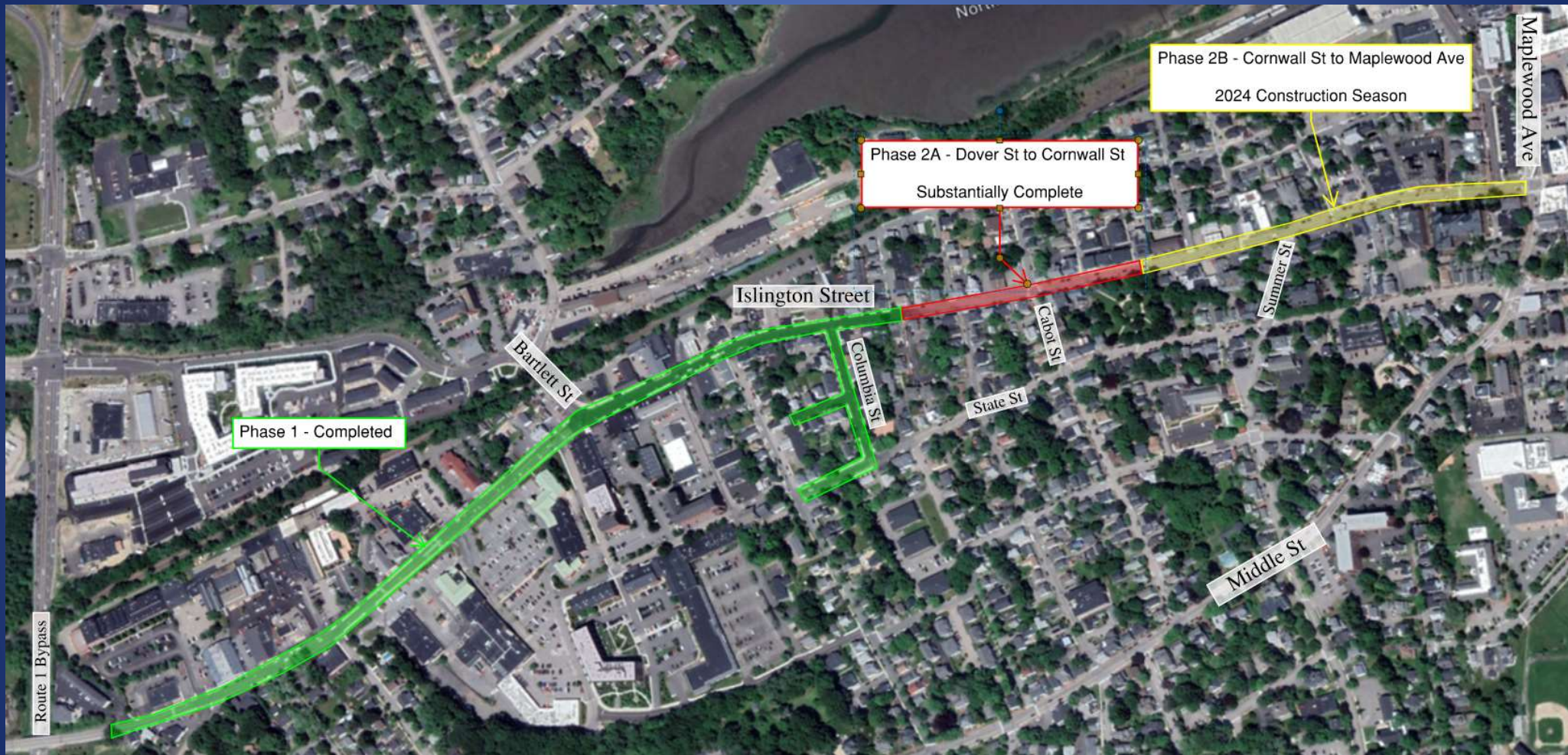
# Project Limits and Scope of Work

# Project Limits

- Goodwin Park Improvements – Substantially Completed 2023, need to add the Drinking Fountain
- Phase 2a: Dover Street to Cornwall Street – 2023 Construction – Substantially Complete on South Side
  - Sidewalks on North Side to occur this Spring
- Phase 2b (Final Phase): Cornwall Street to Maplewood Avenue – to be Substantially Completed this year. Finish any remaining work in Spring of '25.

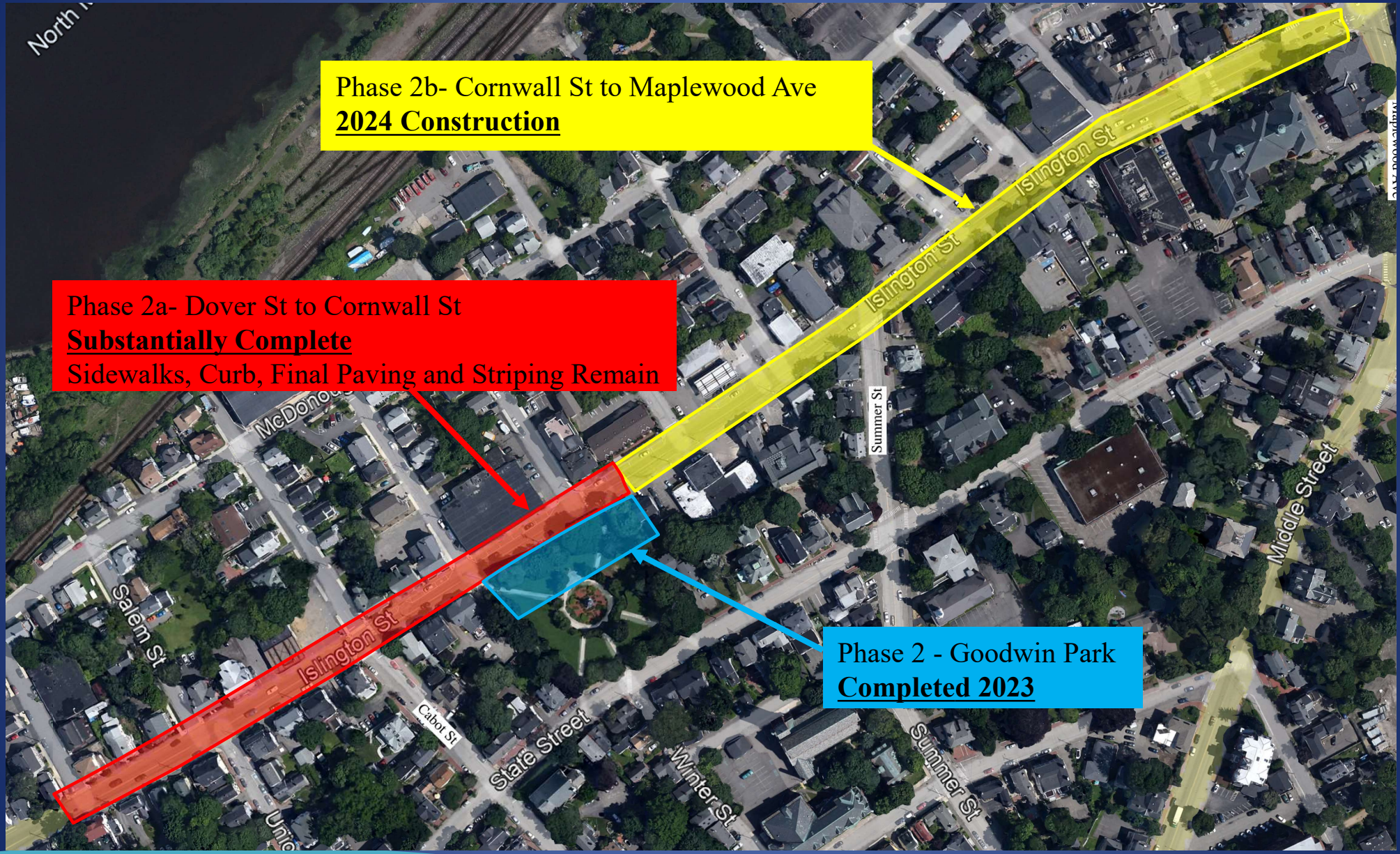


# Phase 1 and Phase 2 Limits of Work





# Phase 2 - Limits of Work



Phase 2b- Cornwall St to Maplewood Ave  
**2024 Construction**

Phase 2a- Dover St to Cornwall St  
**Substantially Complete**  
Sidewalks, Curb, Final Paving and Striping Remain

Phase 2 - Goodwin Park  
**Completed 2023**



# Phase 2b Limits

- Cornwall to Maplewood Ave:
  - Utility Improvements (Replace Sewer & Water)
  - Install Storm Drains
  - Sidewalk Improvements (Sidewalks, Curb, Brick Strip, Trees, and Lighting)
- Drainage Improvements in Flooding Area
- Congress St and Islington Street Intersection Improvements
  - New Signal Improvements
  - Sidewalk and Landscaping Improvements



# Cornwall to Maplewood Ave

**Continue full corridor reconstruction:**  
Utility Installation, Pavement, Sidewalks  
Lighting

**Congress St Intersection Improvements:**  
New Pavement, Sidewalks, Signal  
Improvements, Landscaping and Drainage  
Improvements

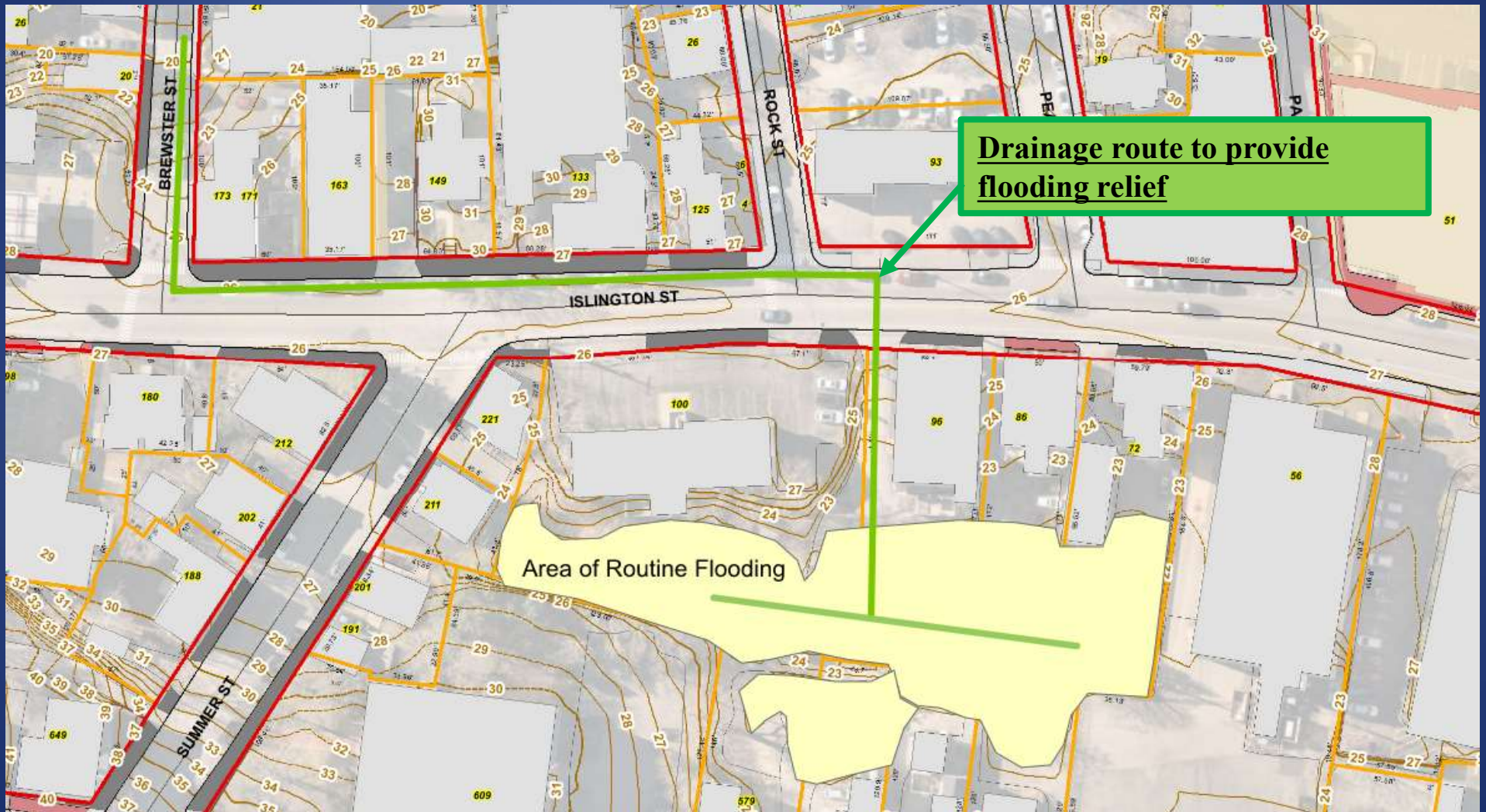
Sidewalks  
Lighting

**Islington Flooded Area**

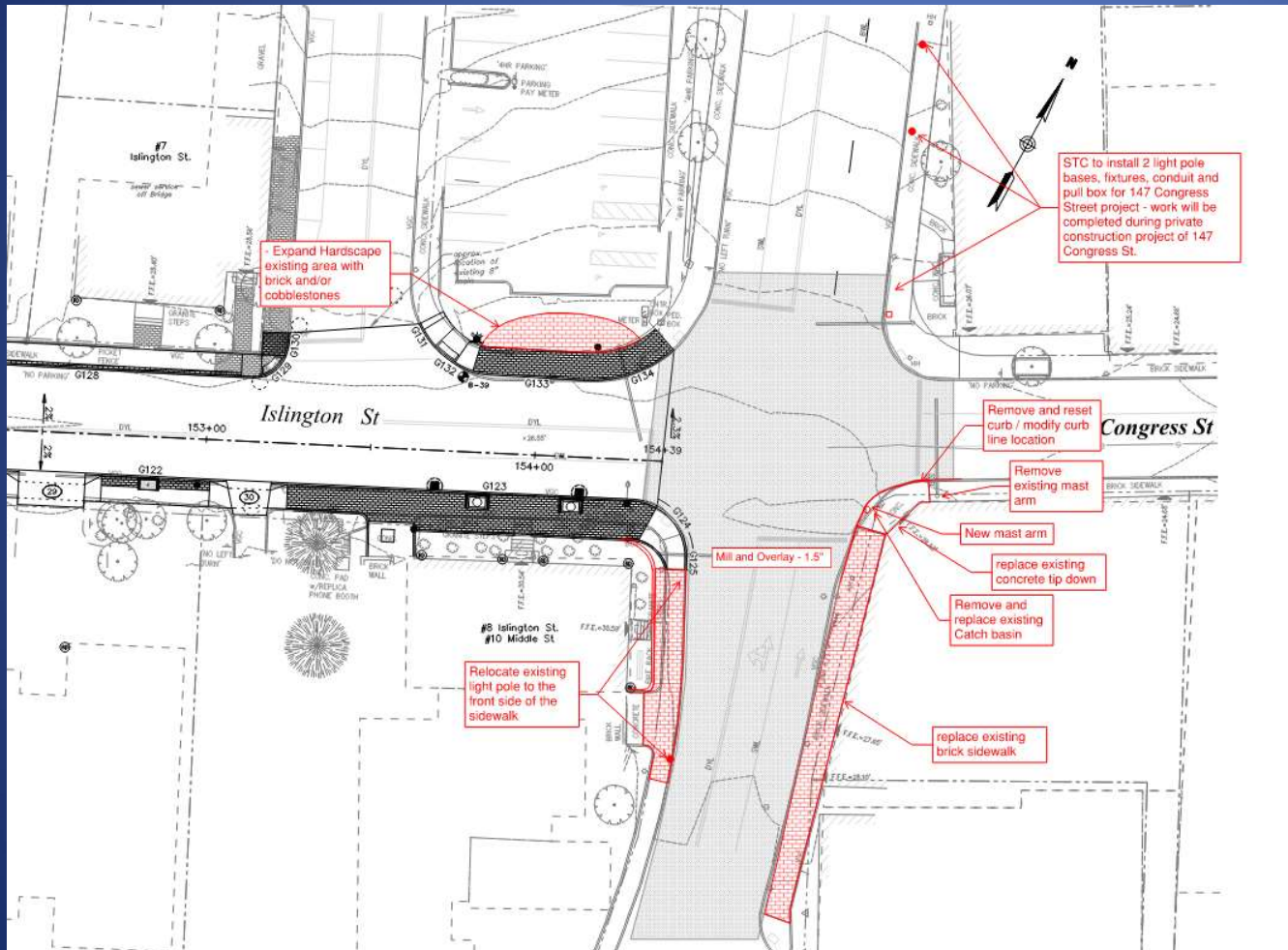
Provide drainage relief for flooded area  
between 100 – 72 Islington and abutting  
State Street properties



# Islington Flooded Area



# Congress Street Intersection



- Replace Traffic Signal Post
- Repave Intersection
- Reconstruct sidewalks
- Install Street Lighting
- Expand Sidewalk Areas



# Construction Start-Up Schedule

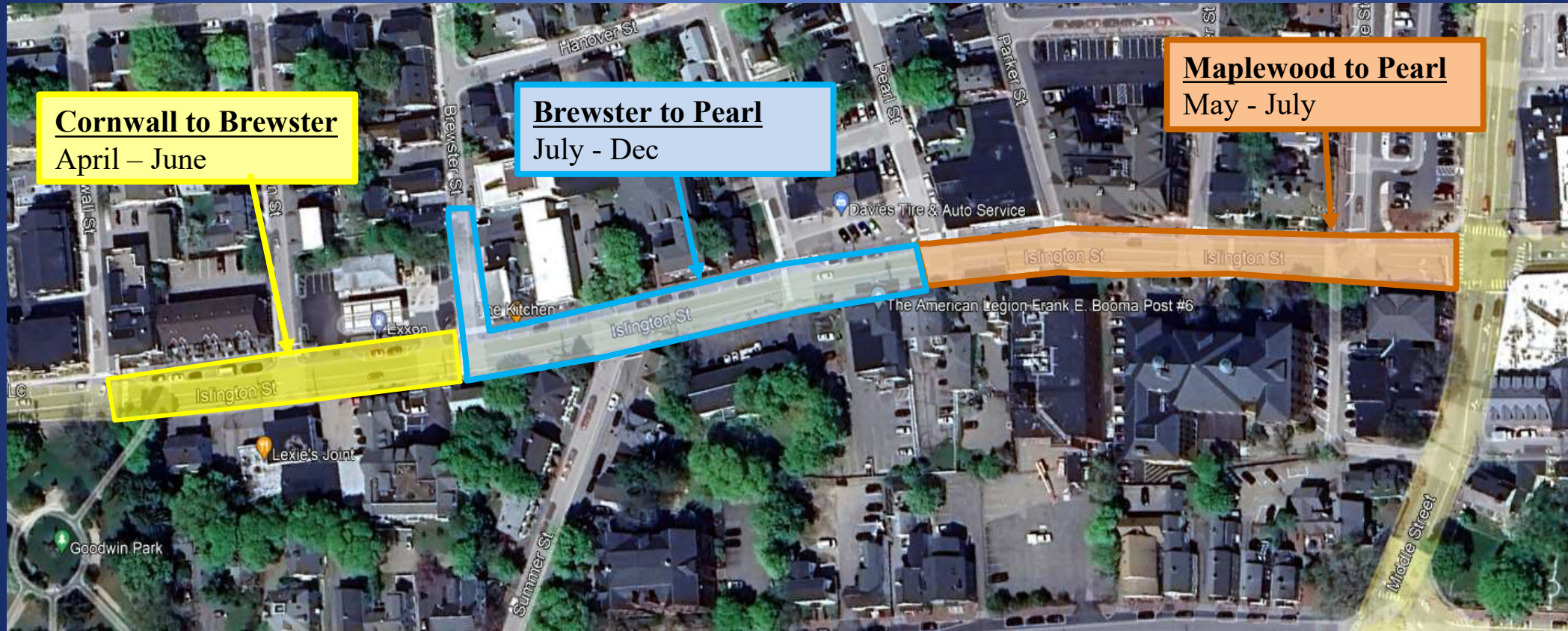
- Construction Starts April 9<sup>th</sup> (Work Hours 7-5)
- Cornwall to Maplewood will be completed in **3 Sections**
- Zone “A” Cornwall to Brewster – April to June
- Zone “C” Maplewood Ave to Pearl Street – May to July/Early August
- Zone “B” Brewster Street to Pearl Street – Underground utility work July/August to December.
- Finish any remaining work (Sidewalks and Final Paving) in Spring of 25.

# Project Sequencing

**Cornwall to Brewster**  
April – June

**Brewster to Pearl**  
July - Dec

**Maplewood to Pearl**  
May - July





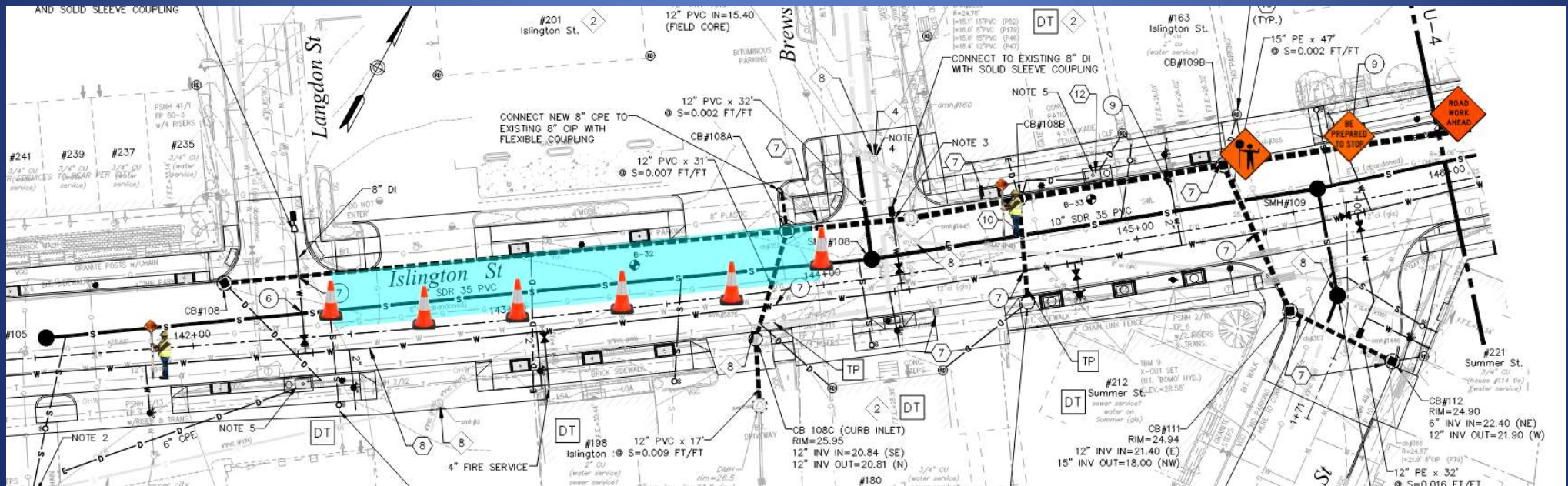
# Traffic Patterns

## Traffic Patterns

- Islington Street one lane alternating most of spring & summer during work hours
  - Cornwall to Brewster
  - Maplewood to Pearl
- Islington Street Detour for Brewster to Pearl during deep utility construction, then one lane alternating..

# Traffic Patterns

- One lane alternating





# Traffic Patterns

- Detour – Brewster to Pearl



# Utility Connections



# Utility Connections

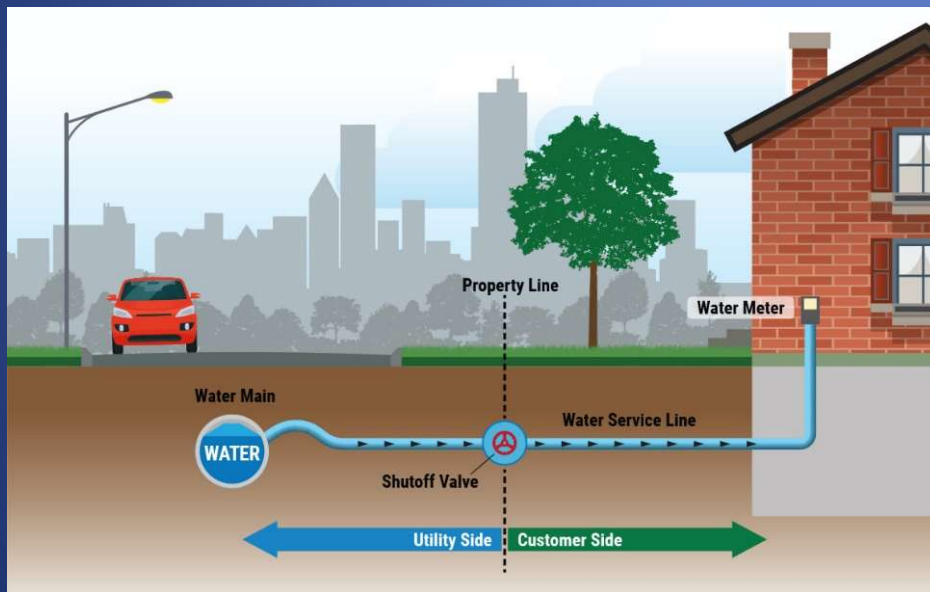
- Sewer, Water, and Storm Drain Connections will be provided for all properties on Islington
- Sewer Connections will be made at the Property line
  - If a sewer service discharges out of the back of your building and you'd like to connect to the new sewer on Islington, Please contact us for coordination. (100, 96, 86, 72, 56 Islington)

# Utility Connections

- Drain Services will be provided to properly discharge private stormwater utilities (Gutters, Sump Pumps)
- Water Services will be replaced to the curb stop\*
  - \* If a galvanized water service is found it is highly recommended that the service be replaced now during construction

# Water Connections

## Water System ownership



## Galvanized Steel Pipe



# Public Information Sources (that aren't incorrect gossip)

## Distribution of Public Information

- Field Personnel (Door to Door)
  - Brad Chareth – Underwood
  - Roger Rivet – Severino
- Message Boards
- Social Media from City of Portsmouth
- Project Web Page (weekly updates)
- E-mail distribution lists
  - E-mail Stephanie Seacord to be added to the distribution list: [sseacord@cityofportsmouth.com](mailto:sseacord@cityofportsmouth.com)



# For General Project Information/Updates:

<https://www.cityofportsmouth.com/publicworks/islington-street-corridor-design-project>


City of PORTSMOUTH NH

DEPARTMENT OF PUBLIC WORKS

Operations Services Resources **Projects** MapGeo Contact

## ISLINGTON STREET CORRIDOR PROJECT

The project area for the first phase of construction includes Islington Street from Bartlett Street to the Route 1 Bypass. Work will include replacement of underground utilities (water sewer drain), roadway reconstruction, curbing and sidewalk installations, and landscaping improvements (ornamental lighting, street trees, benches, etc.) and will be a large step in the revitalization of the West End neighborhood. The goal of this project is to create a "complete street" and will include improvements to the streetscape, traffic signals, utilities, bicycle/pedestrian facilities, transit and vehicular roadway.



RELATED LINKS

- [Islington Street Corridor Character-Based Zoning](#)
- [Bicycle/Pedestrian Plan](#)

Comments regarding construction can be sent to Ryan Flynn, the City's Construction Project Coordinator (contact information at the bottom of this page).

City of PORTSMOUTH NH | DEPARTMENT OF PUBLIC WORKS

Operations Services Resources **Projects** MapGeo Contact

## CURRENT ACTIVITY

### Week of March 9th, 2020

#### Upcoming Work

**Sewer, water, and drainage main installation is tentatively scheduled to resume the week of April 6th.** Minor preparatory operations (layout, pavement saw cutting, exploratory excavations and drilling, etc.) may begin before then with only minor traffic impacts.

#### Water Service Interruptions

No water service interruptions are anticipated at this time. Owners will be notified 48 hours in advance of any scheduled water service interruptions.

#### Traffic Patterns

New traffic patterns/detours will be implemented this year to accommodate new work zones. See below for additional information on detour routes.

#### Work Zones

TBD

#### General Notes

If you have any questions or concerns, please contact Ryan Flynn, construction Project Manager at 766-1413.

Questions?