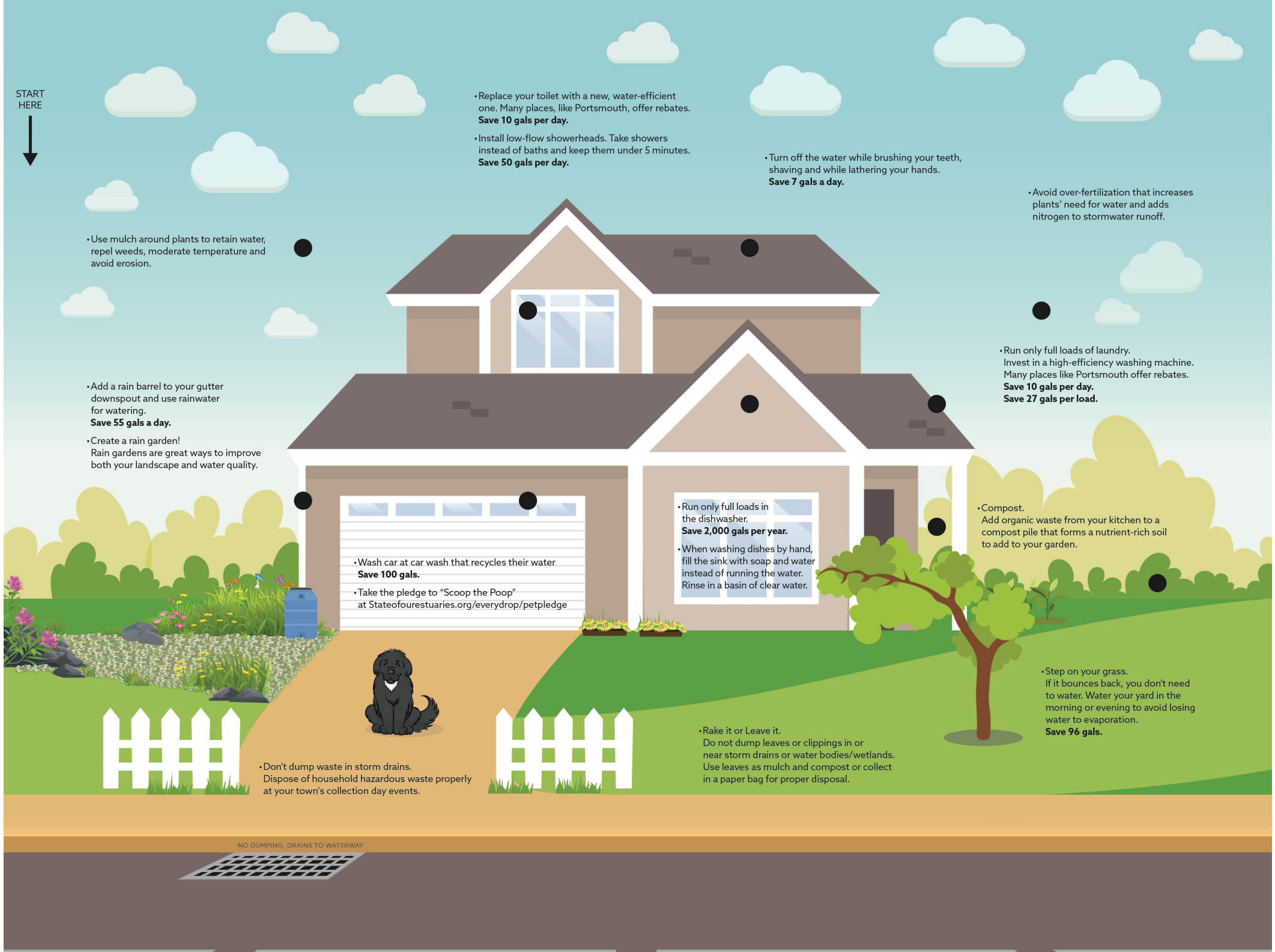


Think Blue! What can YOU do?

See how many of these suggestions from the City of Portsmouth DPW Water-Stormwater Division you can adopt!

START
HERE



• Use mulch around plants to retain water, repel weeds, moderate temperature and avoid erosion.

• Add a rain barrel to your gutter downspout and use rainwater for watering.
Save 55 gals a day.

• Create a rain garden!
Rain gardens are great ways to improve both your landscape and water quality.

• Wash car at car wash that recycles their water.
Save 100 gals.
• Take the pledge to "Scoop the Poop" at Stateofoureestuaries.org/everydrop/petpledge

• Don't dump waste in storm drains. Dispose of household hazardous waste properly at your town's collection day events.

• Replace your toilet with a new, water-efficient one. Many places, like Portsmouth, offer rebates.
Save 10 gals per day.
• Install low-flow showerheads. Take showers instead of baths and keep them under 5 minutes.
Save 50 gals per day.

• Turn off the water while brushing your teeth, shaving and while lathering your hands.
Save 7 gals a day.

• Run only full loads in the dishwasher.
Save 2,000 gals per year.
• When washing dishes by hand, fill the sink with soap and water instead of running the water. Rinse in a basin of clear water.

• Rake it or Leave it. Do not dump leaves or clippings in or near storm drains or water bodies/wetlands. Use leaves as mulch and compost or collect in a paper bag for proper disposal.

• Avoid over-fertilization that increases plants' need for water and adds nitrogen to stormwater runoff.

• Run only full loads of laundry. Invest in a high-efficiency washing machine. Many places like Portsmouth offer rebates.
Save 10 gals per day. Save 27 gals per load.

• Compost. Add organic waste from your kitchen to a compost pile that forms a nutrient-rich soil to add to your garden.

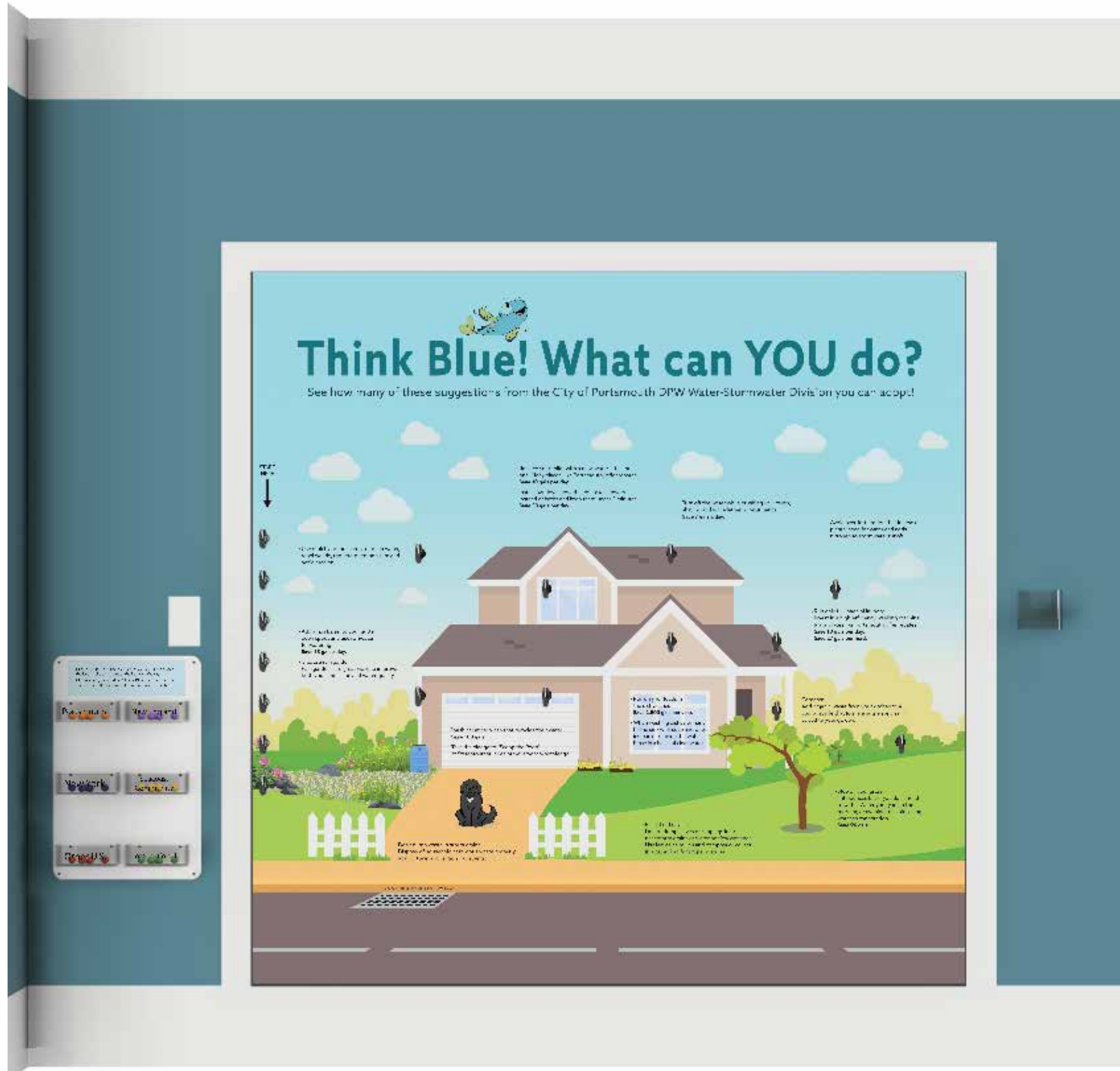
• Step on your grass. If it bounces back, you don't need to water. Water your yard in the morning or evening to avoid losing water to evaporation.
Save 96 gals.

NO DUMPING, DRAINS TO WATERWAY

Choose a color yarn based on where you live. Then attach the loop on the end to one of the hooks on the right.

Choose what you will do to “Think Blue” by threading the yarn through the loops at different points on the picture.

11.5" x 3.5"



Notes:

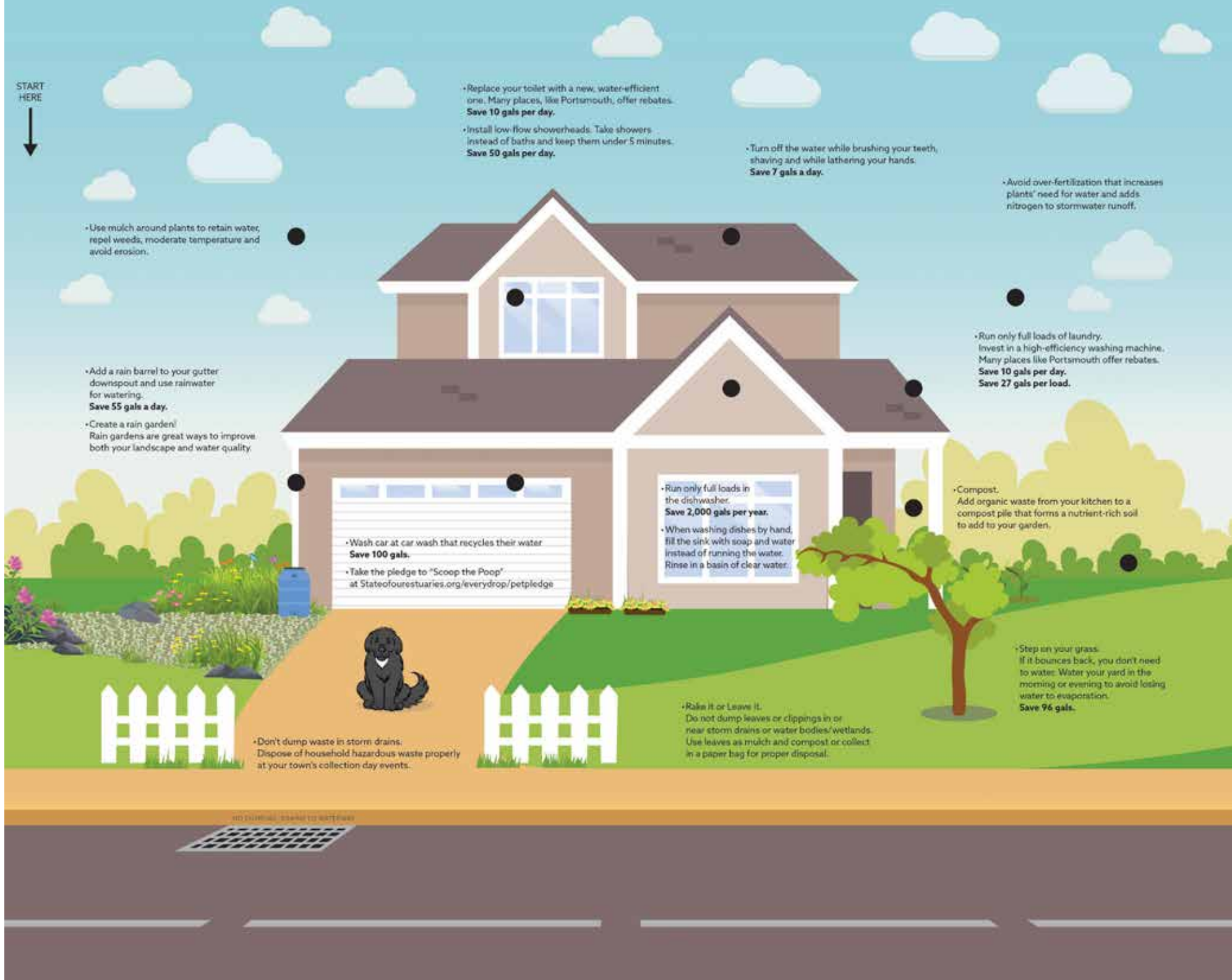
1. The graphic is printed on vinyl with a polycarbonate over lamination.
2. The graphic is applied to a plywood back plane.
3. The back plane is mounted directly to the wall with visible fasteners.
4. Six clear boxes are mounted to the left of the graphic. Each box contains rolled up balls of yarn.
5. One brochure holder is mounted on the wall to the right of the graphic.

CLIENT	Trivium	08.13.2020	
	PROJECT	Strawberry Banke Blue	REV
DRAWING	Detail Design	PAGE	1 of 5
	SHEET	Overview	3
(413) 203-4948 www.42designfab.com 34 Front St Suite 420 PO Box 51942 Indian Orchard, MA 01151		42 design fab	



Think Blue! What can YOU do?

See how many of these suggestions from the City of Portsmouth DPW Water-Stormwater Division you can adopt!



START
HERE
↓

- Replace your toilet with a new, water-efficient one. Many places, like Portsmouth, offer rebates. **Save 10 gals per day.**
- Install low-flow showerheads. Take showers instead of baths and keep them under 5 minutes. **Save 50 gals per day.**

- Turn off the water while brushing your teeth, shaving and while lathering your hands. **Save 7 gals a day.**

- Avoid over-fertilization that increases plants' need for water and adds nitrogen to stormwater runoff.

- Use mulch around plants to retain water, repel weeds, moderate temperature and avoid erosion.

- Add a rain barrel to your gutter downspout and use rainwater for watering. **Save 55 gals a day.**
- Create a rain garden! Rain gardens are great ways to improve both your landscape and water quality.

- Wash car at car wash that recycles their water. **Save 100 gals.**
- Take the pledge to "Scoop the Poop" at StateofNewHampshire.gov/everydrop/petpledge

- Run only full loads in the dishwasher. **Save 2,000 gals per year.**
- When washing dishes by hand, fill the sink with soap and water instead of running the water. Rinse in a basin of clear water.

- Run only full loads of laundry. Invest in a high-efficiency washing machine. Many places like Portsmouth offer rebates. **Save 10 gals per day. Save 27 gals per load.**

- Compost. Add organic waste from your kitchen to a compost pile that forms a nutrient-rich soil to add to your garden.

- Step on your grass. If it bounces back, you don't need to water. Water your yard in the morning or evening to avoid losing water to evaporation. **Save 96 gals.**

- Rake it or Leave it. Do not dump leaves or clippings in or near storm drains or water bodies/wetlands. Use leaves as mulch and compost or collect in a paper bag for proper disposal.

- Don't dump waste in storm drains. Dispose of household hazardous waste properly at your town's collection day events.

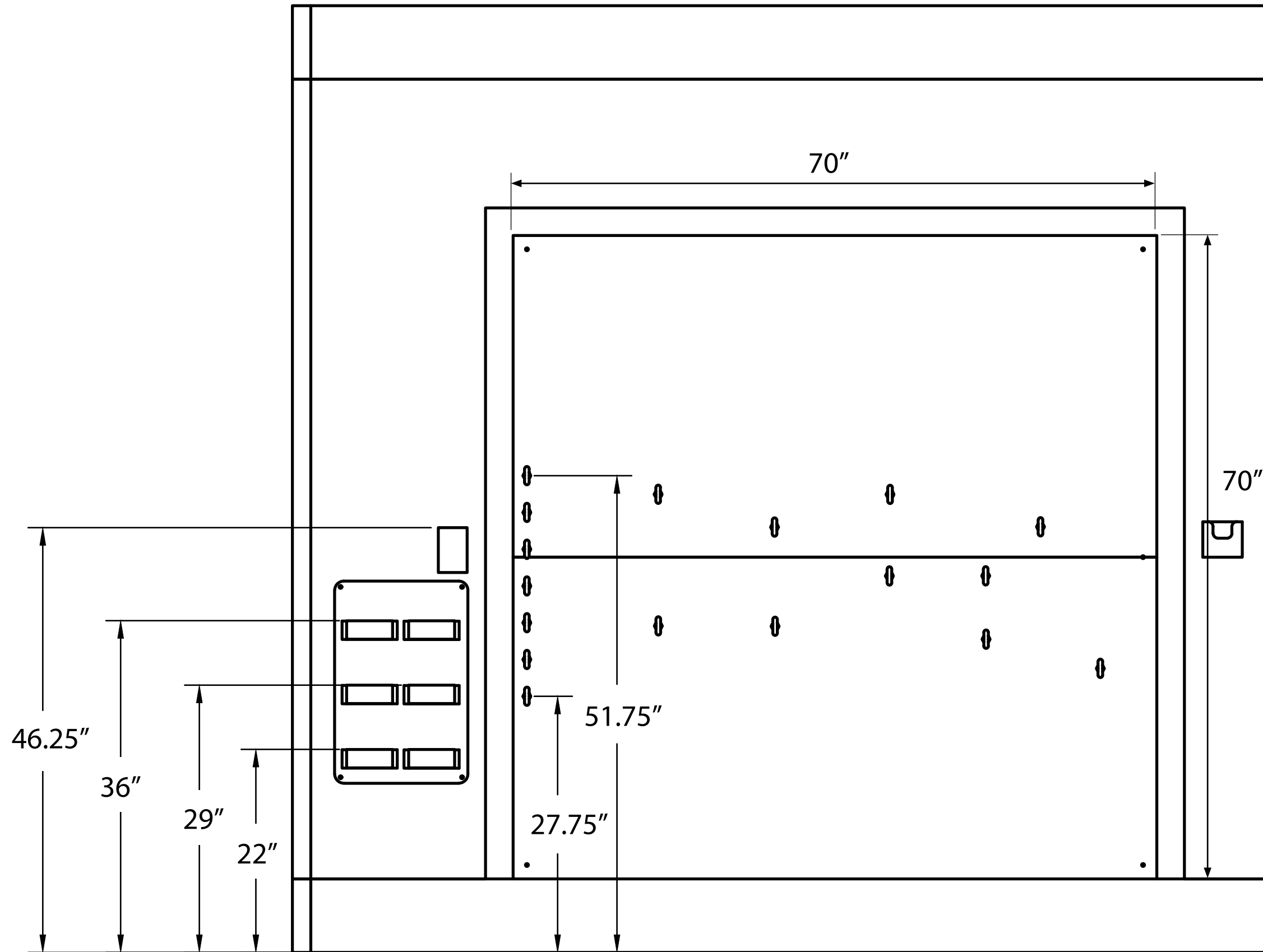
NO DUMPING - STORM TO WATERWAY

Choose a color yarn based on where you live. Then attach the loop on the end to one of the hooks on the right.
Choose what you will do to "Think Blue" by threading the yarn through the loops at different points on the picture.

Yarn Instructions
Back Wall Mural

CLIENT	Trivium	08.13.2020	
	PROJECT	Strawberry Banke Blue	REV
DRAWING SHEET	DRAWING	2 of 5	PAGE
	SHEET	Graphics	3
(413) 203-4948 www.42designfab.com 34 Front St Suite 420 PO Box 51942 Indian Orchard, MA 01151			
42 design fab			

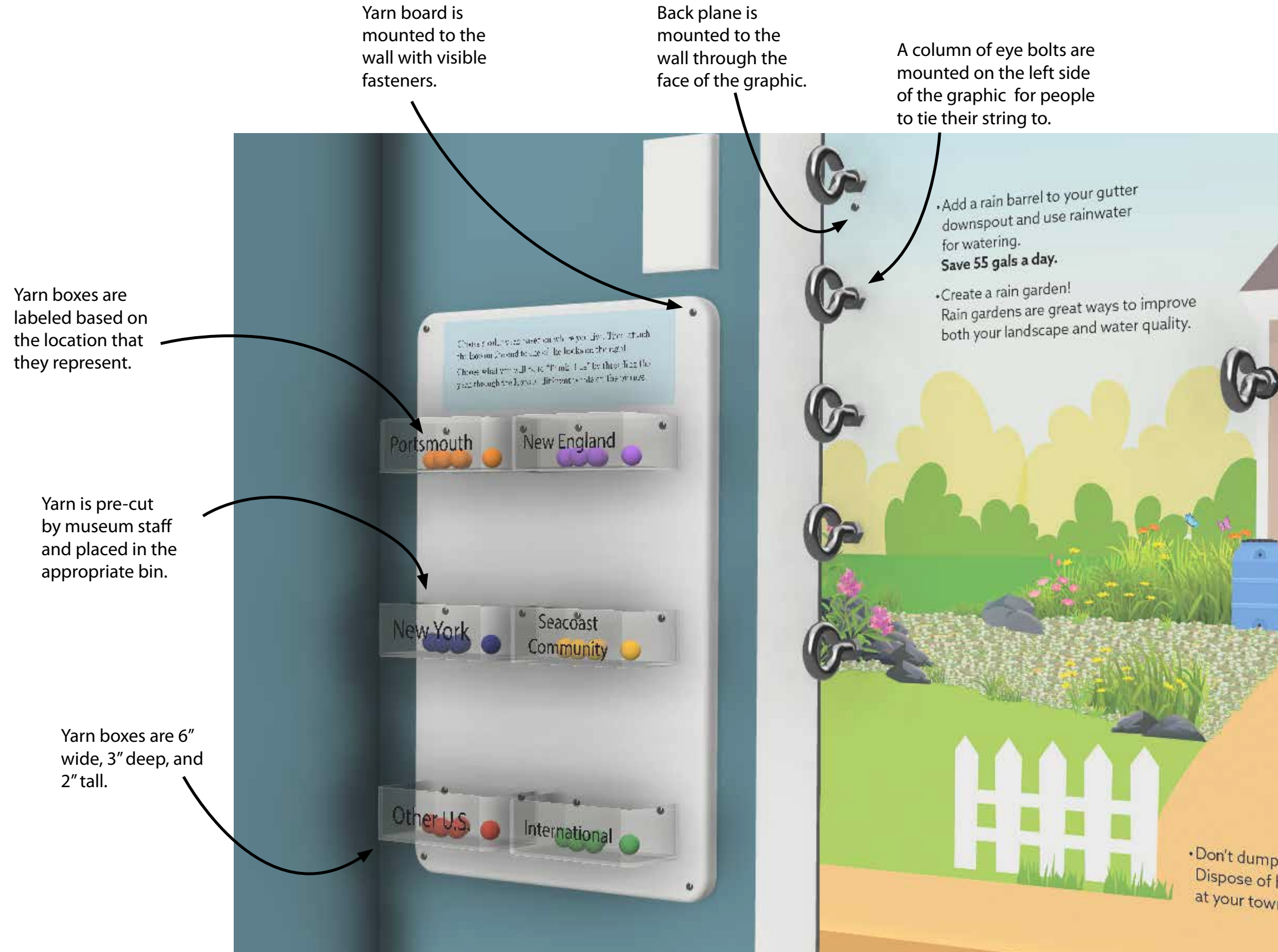
1063 Strawberry Banke



Dimensions may vary slightly from what is shown

42 design fab	(413) 203-4948 www.42designfab.com 34 Front St Suite 420 PO Box 51942 Indian Orchard, MA 01151	CLIENT	Trivium	08.13.2020	
		PROJECT	Strawberry Banke Blue	PAGE	3 of 5
DRAWING	Detail Design	REVISIONS		REV	3
SHEET	Dimensions				

1063 Strawberry Banke



Yarn board is mounted to the wall with visible fasteners.

Back plane is mounted to the wall through the face of the graphic.

A column of eye bolts are mounted on the left side of the graphic for people to tie their string to.

Yarn boxes are labeled based on the location that they represent.

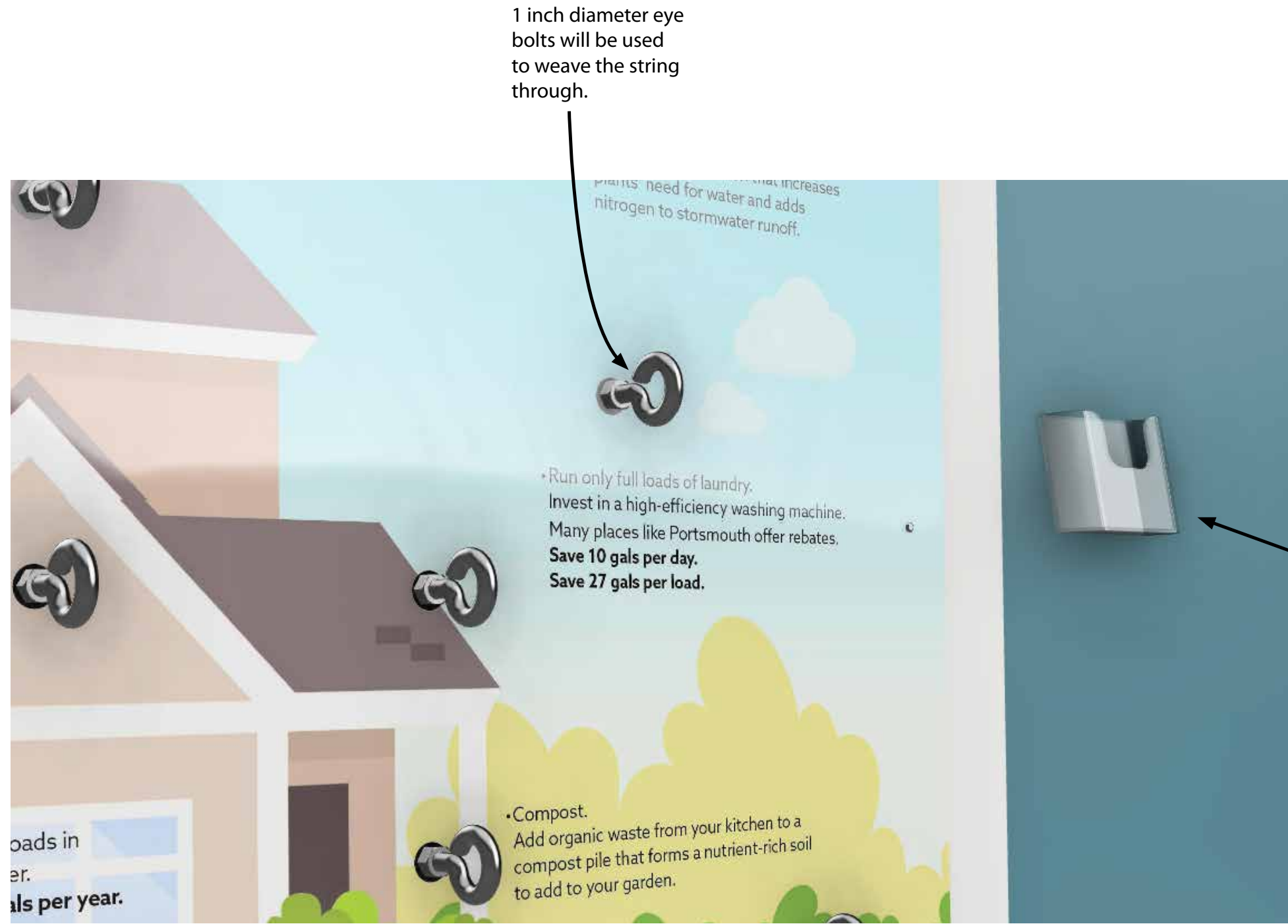
Yarn is pre-cut by museum staff and placed in the appropriate bin.

Yarn boxes are 6" wide, 3" deep, and 2" tall.

Notes:
1. Final mounting details may vary slightly from what is shown.

CLIENT	Trivium	08.13.2020	
	PROJECT	Strawberry Banke Blue	REV
DRAWING SHEET	DETAIL DESIGN	PAGE	4 of 5
	LEFT SIDE DETAILS	REV	3
(413) 203-4948 www.42designfab.com 34 Front St Suite 420 PO Box 51942 Indian Orchard, MA 01151			
42 design fab			

1063 Strawberry Banke



1 inch diameter eye bolts will be used to weave the string through.

A simple, off the shelf, clear plastic brochure holder will be mounted on the wall to the right of the graphic.

42 design fab (413) 203-4948 www.42designfab.com 34 Front St Suite 420 PO Box 51942 Indian Orchard, MA 01151	CLIENT	Trivium	08.13.2020	
	PROJECT	Strawberry Banke Blue	PAGE	5 of 5
	DRAWING	Detail Design	REV	3
	SHEET	Right Side Details		