

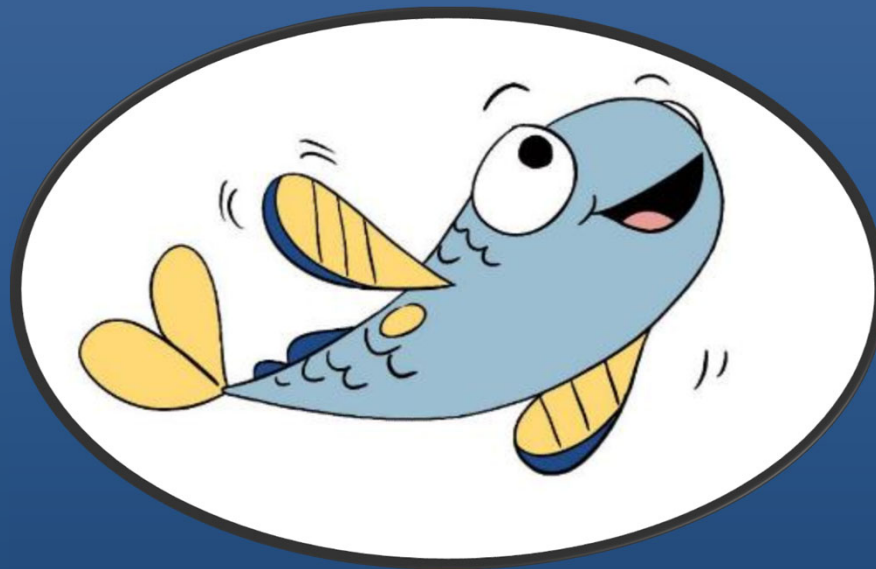
Private Property Stormwater Management



City of Portsmouth's Stormwater System – Permit Requirements

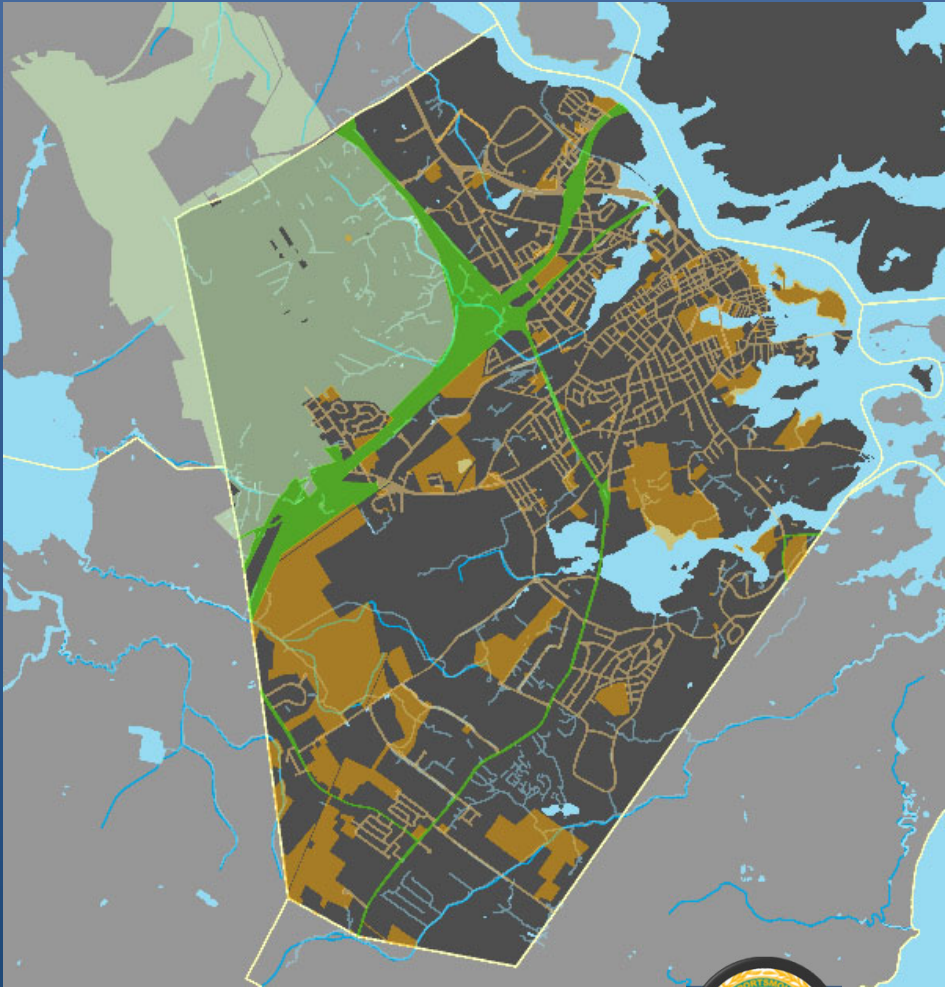
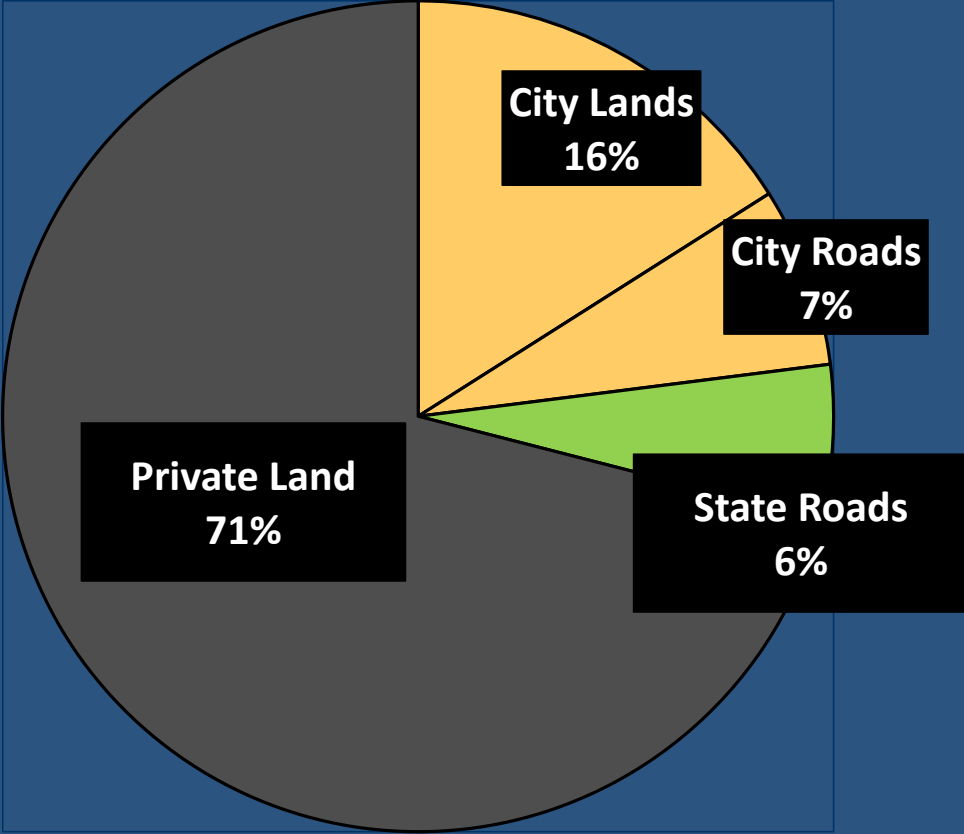


City's Stormwater Management
+ Private Property Stormwater Management =
Happy and Healthy Sea Life



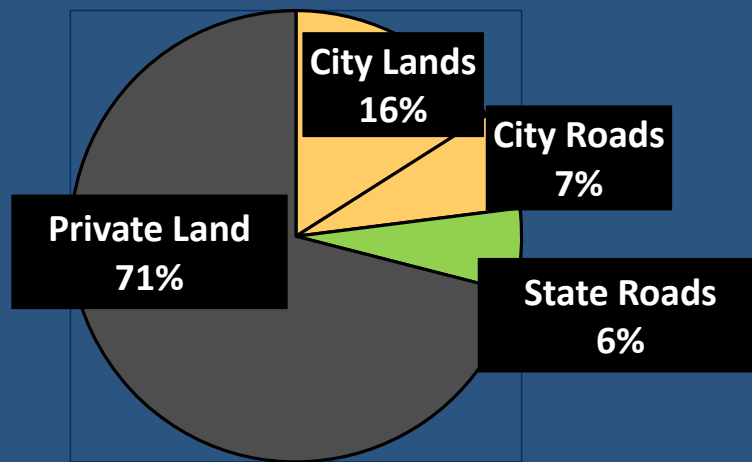
Think Blue

LAND IN PORTSMOUTH



Private Lands In Portsmouth

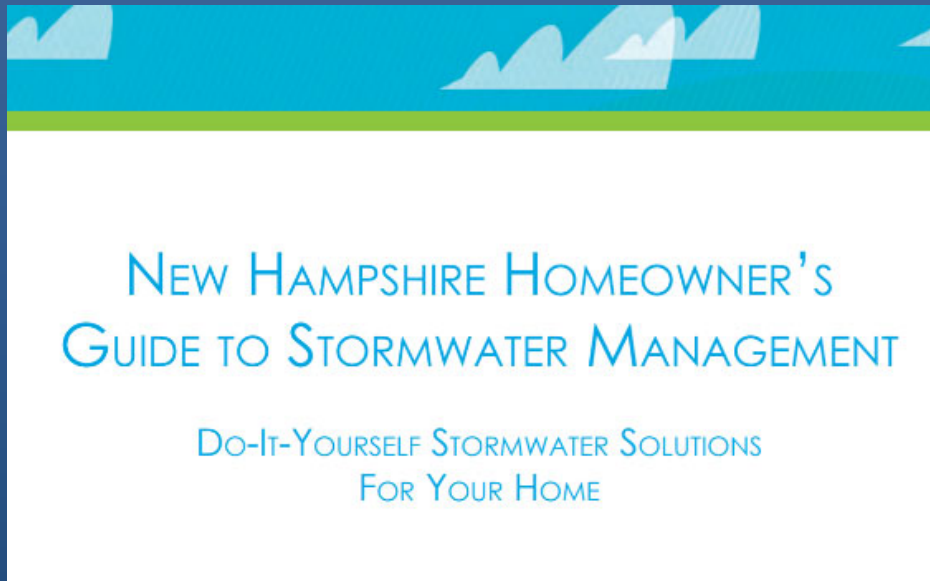
LAND IN PORTSMOUTH



- With 71% of land in Portsmouth being private property a successful stormwater program depends on private landowners doing their part to “Think Blue.”
- Here are some tips...



Resources to Help



THINK BLUE



Find out more about how you can help protect clean water by soaking up the rain at

www.soaknh.org



Good Housekeeping Practices

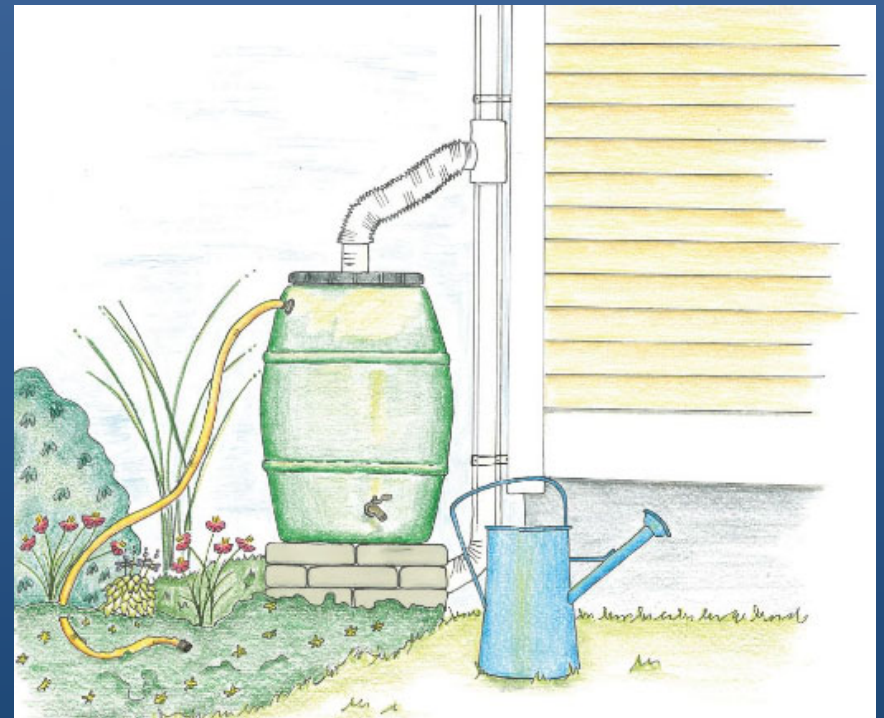
- Don't over-fertilize lawns and plants
- Be efficient with water use
- Sweep driveway
- Don't drop waste into catch basins
- Pick up pet waste
- Participate in Household Hazardous Waste Collections



THINK BLUE

Rain Barrel

- Captures rainwater from your roof to reduce runoff from your property and provide you with water for lawns, gardens, and indoor plants to use in dry weather.

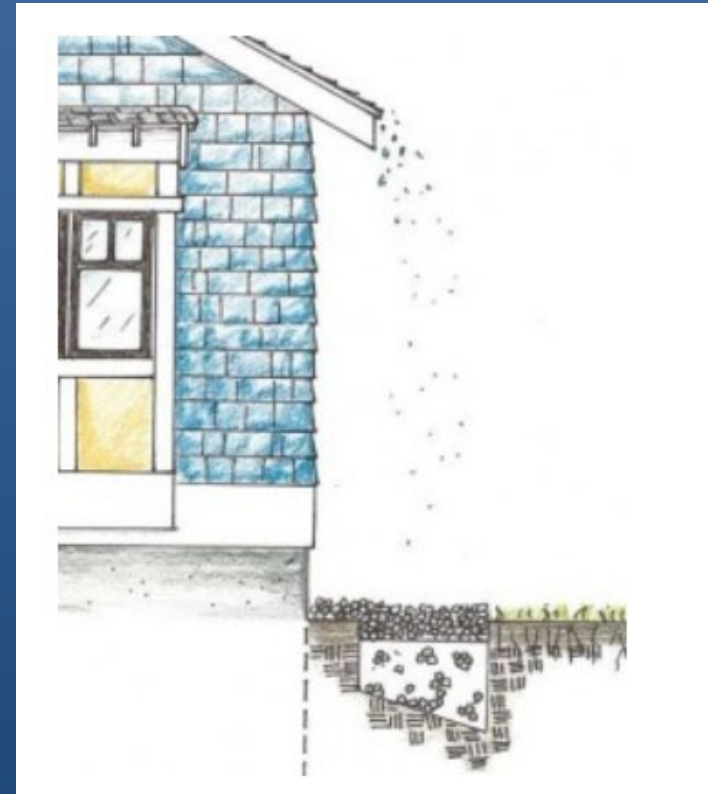
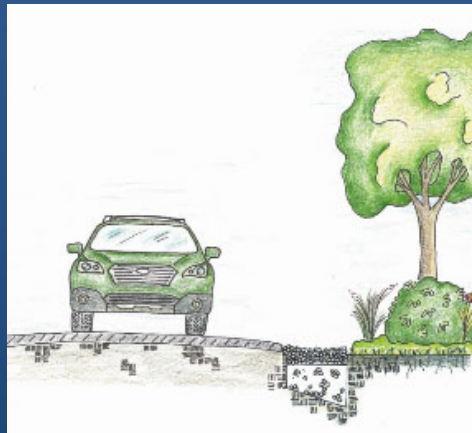


THINK BLUE

Source: www.soaknh.org (NHDES)

Infiltration Trenches

- Collects and infiltrates stormwater from roofs until it soaks into the ground.

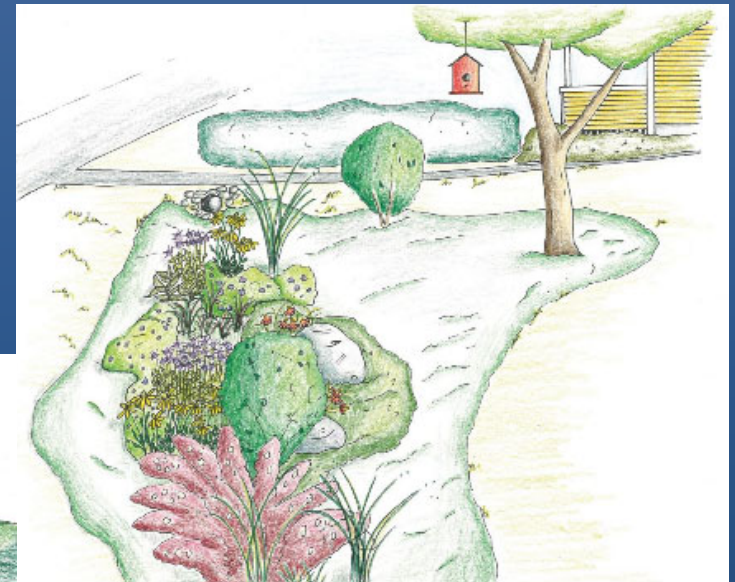


THINK BLUE

Source: www.soaknh.org (NHDES)

Vegetated Swales and Buffers

- Slows runoff and provides shade, stabilizes slopes, and can help slow down and clean stormwater runoff.



THINK BLUE

Source: www.soaknh.org (NHDES)

Rain Garden

- Capture, absorb, and treat stormwater.



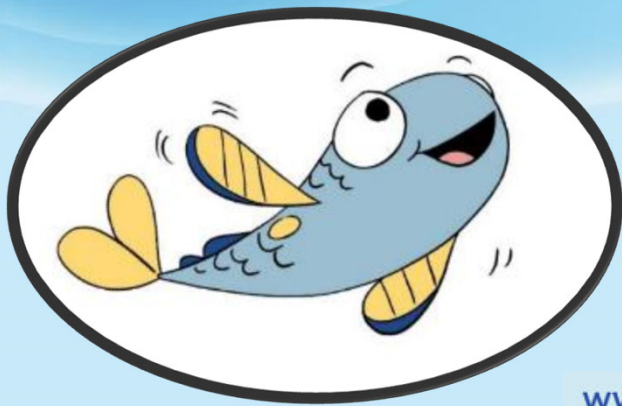
THINK BLUE

Source: www.soaknh.org (NHDES)

Two Examples of Rain Gardens in Portsmouth...



THINK BLUE



Blue the Happy Fish
Graphic by: Jane Almeida

City of Portsmouth
Department of Public Works
Stormwater Division

www.cityofportsmouth.com/publicworks/stormwater

